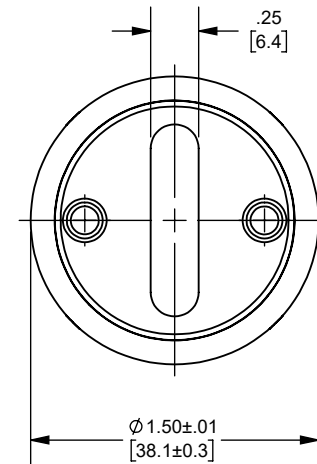
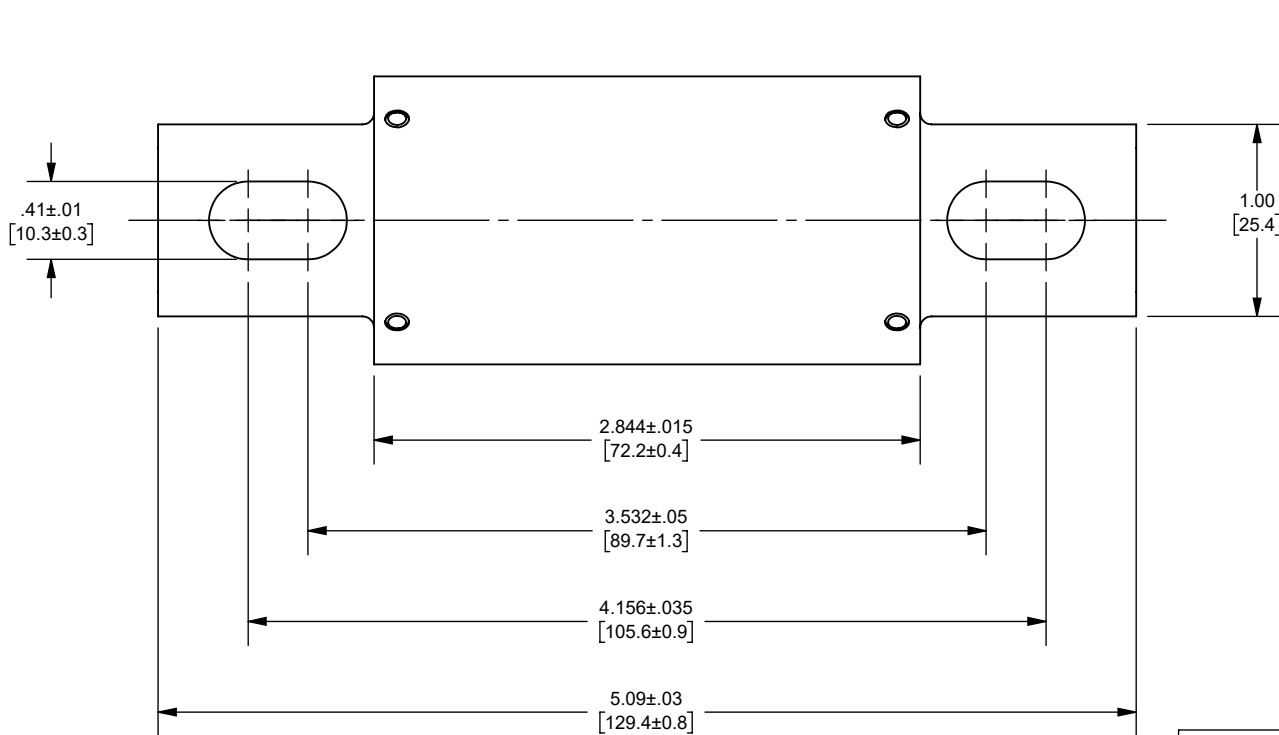


REV.	DATE	ECO	DESCRIPTION	BY	CK	APP
A	5/15/2023	17405	INITIAL RELEASE	ABT	N/A	SEE ECO



OUTLINE DIMENSIONS
NOT TO BE USED FOR PRODUCTION

DIMENSIONS IN []
ARE MILLIMETERS

Approval stage / Etat d'approbation: APPROUVÉ POUR FABRICATION / APPROVED FOR MANUFACTURING	Product Class:/ Product Type:	DC FUSE	
	Product amp rating:/ Voltage rating:	225 - 300A	1000 VDC
Initial ECO / ECO intiale:	ECO-17405-000	Title / Titre:	Weight : Masse :
Draw by / Dessiné par: Alma Balcazar	Date : 6/9/2023	Drawing / de dessin: OUT-1208186	
Checked by / Vérifié par: Yadyra Fang	Date : 6/12/2023		
Electrical Power 374 MERRIMAC STREET NEWBURYPORT, MA 01950	Éch / Scale : 1:1 Format / Size : A	Part / Article: SEE TABLE	Page : 1/1



Ce plan strictement confidentiel est la propriété exclusive de la société MERSEN sans l'autorisation écrite de laquelle il ne peut être ni reproduit, ni copié, ni communiqué à des tiers.
This drawing and specifications there on is property of MERSEN and shall not be reproduced or copied or used in whole or in part as the base for manufacture or sale of item without written permission.

D100QS300-4
D100QS250-4
D100QS225-4
CATALOG NUMBER