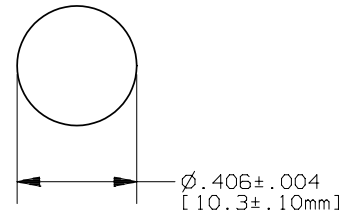
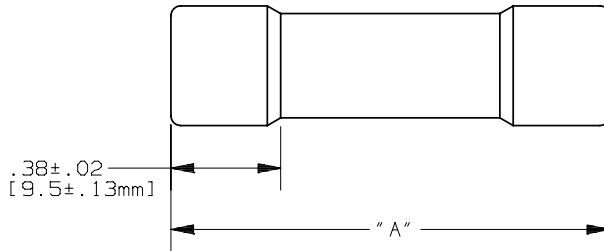


REV	DATE	ECO	DESCRIPTION	BY	CK	APP
-	11/4/02	N/A	INITIAL RELEASE	LAS	N/A	N/A



NOTES:

1. DIMENSIONS ARE IN  $\frac{\text{INCH}}{\text{MILLIMETER}}$

FUSE	" A "
FSM44/100	1.375±.031 [34.9±.79mm]
FSM11	1.500±.031 [38±.79mm]
FSM15	1.500±.031 [38±.79mm]



MERSEN USA NEWBURYPORT-MA, LLC  
374 MERRIMAC STREET  
NEWBURYPORT, MA 01950

PRODUCT MANAGER

DESIGN ENGINEER

SIGN:  
DATE:

SIGN:  
DATE:

FSM(44/100, 11, 15)  
MISCELANEOUS MIDGET FUSE  
44/100A, 11A, 15A 1000V  
PLATED TERMINALS

OUTLINE DIMENSIONS  
NOT TO BE USED FOR PRODUCTION

700895