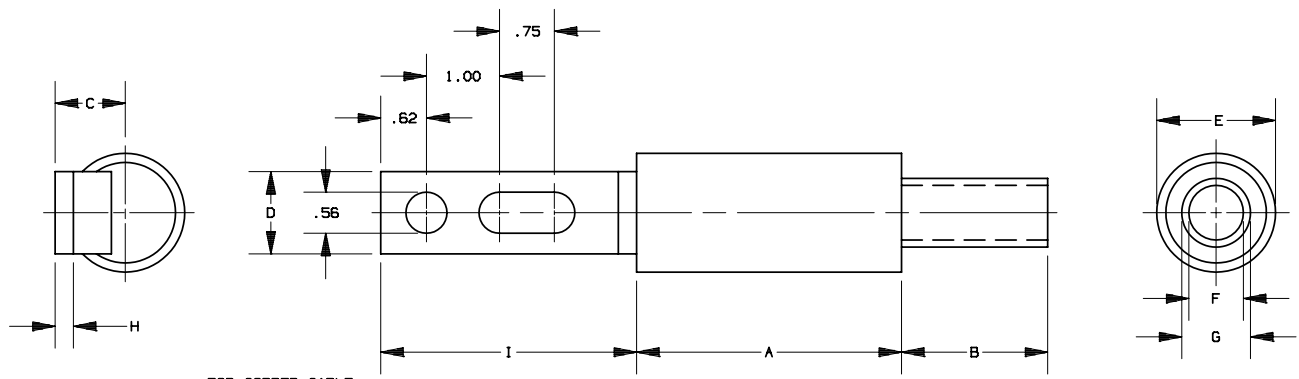


REV	DATE	ECO	DESCRIPTION	BY	CK	APP
J	1/3/08	N/A	REMOVED CAT. NO. CPH600C3	GDR	N/A	N/A



* FOR COPPER CABLE

CATALOG NO.	CATALOG NO.	CABLE SIZE *	A	B	C	D	E DIA	F DIA	G DIA	H	I
CP2C3		#2	3.62	1.75	.96	1.12	1.44	.31	58 .2	.25	3.50
CP1/0C3		1/0	3.62	1.75	.96	1.12	1.44	.39	.52	.25	3.50
CP2/0C3		2/0	3.62	1.75	.96	1.12	1.44	.44	.56	.25	3.50
CP4/0C3	CPH4/0C3	4/0	3.62	1.75	.96	1.12	1.44	.55	.68	.25	3.50
CP250C3	CPH250C3	250MCM	3.62	1.88	.96	1.12	1.44	.62	.75	.25	3.50
CP350C3	CPH350C3	350MCM	3.62	2.00	.96	1.12	1.62	.71	.88	.25	3.50
CP400C3		400MCM	3.62	2.00	.96	1.12	1.62	.75	.94	.25	3.50
CP500C3	CPH500C3	500MCM	3.62	2.88	1.19	1.62	1.88	.82	1.05	.25	3.50
CP600C3		600MCM	3.75	2.88	1.31	2.00	2.50	.94	1.07	.25	3.50
CP750C3	CPH750C3	750MCM	3.75	2.88	1.31	2.00	2.50	1.06	1.32	.25	3.50
CP1000C3		1000MCM	3.75	3.13	1.56	2.00	3.00	1.16	1.50	.38	3.75

NOTES:

FOR HEAT SHRINKABLE TUBING ADD HS TO CATALOG NO. EXAMPLE CP350C3-HS
TERMINALS-PLATED



MERSEN USA NEWBURYPORT-MA, LLC
374 MERRIMAC STREET
NEWBURYPORT, MA 01950

CABLE PROTECTOR

600 VOLT

CP(H)(2-1000)C3(-HS)

OUTLINE DIMENSIONS
NOT TO BE USED FOR PRODUCTION

17515

PRODUCT MANAGER

DESIGN ENGINEER

SIGN:

SIGN:

DATE:

DATE: