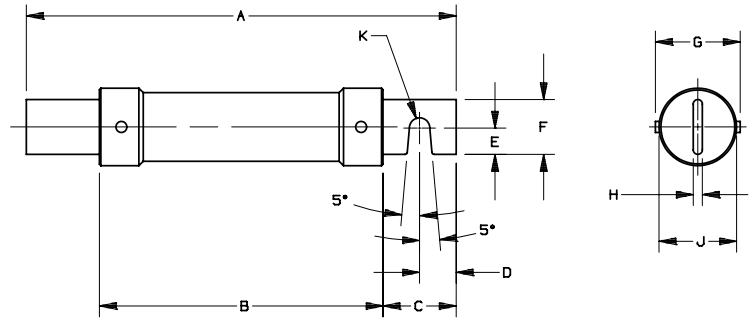


REV	DATE	ECO	DESCRIPTION	BY	CK	APP
G	4/8/02	N/A	REDRAWN TO CURRENT STANDARDS	LAS	N/A	N/A



NOTE: CAT. NO. FOR 250 VOLT. A2K(AMP RATING)R  
 CAT. NO. FOR 600 VOLT. A6K(AMP RATING)R

401-600	600	13.38	8.19	8.84	2.25	1.12	.98	2.00	-	.25	3.14	.27
201-400		11.62	7.12	7.84	1.88	.94	.78	1.62	-	.25	2.58	.20
101-200		9.62	6.12	6.81	1.38	.69	.55	1.12	-	.19	1.83	.14
61-100		7.88	5.38	5.81	1.00	.50	.36	.75	1.44	.12	1.34	.14
401-600	250	10.36	5.19	5.84	2.25	1.12	.98	2.00	2.91	.25	2.58	.27
201-400		8.62	4.62	4.84	1.88	.94	.78	1.62	2.41	.25	20.8	.20
101-200		7.12	4.12	4.31	1.38	.69	.55	1.12	-	.19	1.58	.14
61-100		5.88	3.38	3.81	1.00	.50	.36	.75	1.19	.12	1.06	.14
AMP. RATING	VOLT	A	MIN. B	MAX. C	MIN. D	E	F	G MAX.	H	J	K RAD.	



MERSEN USA NEWBURYPORT-MA, LLC  
 374 MERRIMAC STREET  
 NEWBURYPORT, MA 01950

AMP-TRAP FUSE, CLASS RK1

61-600A 250 & 600 V

OUTLINE DIMENSIONS  
 NOT TO BE USED FOR PRODUCTION

16881

PRODUCT MANAGER  
 SIGN:  
 DATE:

DESIGN ENGINEER  
 SIGN:  
 DATE: