

# Central Bolted fuse-links gM 415VAC/240VDC

LOW VOLTAGE IEC FUSES

BS FUSE-LINKS



The fuse complies with standard EN 60269-2 and standard BS 88 part 2. These fuses are designed for : “General purpose use” motor protection (gM type). This fuse range insures an excellent current limitation for all overloads on a large range of applications. Their size cannot allow exchange by other fuses of higher rating in their range. They are screwed into fuseholders or bolted directly onto busbars, or in fuse interrupters disconnectors.

## TECHNICAL DATA OVERVIEW

Current rating In M Ich	63M80 to 315M400 A
Rated voltage AC (IEC)	415 V
Rated voltage DC (IEC)	240 V
Breaking capacity AC	80 kA
Breaking capacity DC	40 kA
Speed/Characteristic	gM
Body Material	Ceramic
BS type	BTC, BTSDC, BTF, BTKF

## FEATURES & BENEFITS

- Excellent current limitation for all overloads

## APPLICATIONS

- These fuses are designed for : “General purpose use” motor protection (gM type)

## STANDARDS

- EN 60269-2
- BS88-2



# Central Bolted fuse-links gM 415VAC/240VDC

## PRODUCT RANGE



BTC42V100M200

### Type B1C 415VAC/240VDC gM BTC 2 holes

Catalog number	Item number	Rated voltage AC (IEC)	Rated voltage DC (IEC)	Current rating In M Ich	Pre-arcing I <sup>2</sup> t	Clearing I <sup>2</sup> t at Rated Voltage	Rated breaking capacity AC	Rated breaking capacity DC	Power dissipation at I <sub>n</sub>	Weight
BTC42V100M125	Q226311	415 V	240 V	100M125 A	28000 A <sup>2</sup> s	78400 A <sup>2</sup> s	80 kA	40 kA	9 W	0.12 kg
BTC42V100M160	R226312	415 V	240 V	100M160 A	60000 A <sup>2</sup> s	168000 A <sup>2</sup> s	80 kA	40 kA	8.8 W	0.12 kg
BTC42V100M200	S226313	415 V	240 V	100M200 A	105000 A <sup>2</sup> s	293000 A <sup>2</sup> s	80 kA	40 kA	8.1 W	0.24 kg

### Type B1C 415VAC/240VDC gM BTSDC

Catalog number	Item number	Rated voltage AC (IEC)	Rated voltage DC (IEC)	Current rating In M Ich	Pre-arcing I <sup>2</sup> t	Clearing I <sup>2</sup> t at Rated Voltage	Rated breaking capacity AC	Rated breaking capacity DC	Power dissipation at I <sub>n</sub>	Weight
BTSDC42V100M125	M1019210	415 V	240 V	100M125 A	16000 A <sup>2</sup> s	70000 A <sup>2</sup> s	80 kA	40 kA	9.2 W	86 g
BTSDC42V63M100	L1019209	415 V	240 V	63M100 A	14000 A <sup>2</sup> s	65000 A <sup>2</sup> s	80 kA	40 kA	4.7 W	86 g
BTSDC42V63M80	K1019208	415 V	240 V	63M80 A	8500 A <sup>2</sup> s	38250 A <sup>2</sup> s	80 kA	40 kA	5.1 W	86 g
BTSDC42V80M100	Y1054364 <sup>1</sup>	415 V	240 V	80M100 A	14000 A <sup>2</sup> s	65000 A <sup>2</sup> s	80 kA	40 kA	6 W	86 g

<sup>1</sup>Product not compliant with ASTA 20 CERTIF.



BTF42V200M315

### Type B2 415VAC/240VDC gM BTF 2 hole

Catalog number	Item number	Rated voltage AC (IEC)	Rated voltage DC (IEC)	Current rating In M Ich	Pre-arcing I <sup>2</sup> t	Clearing I <sup>2</sup> t at Rated Voltage	Rated breaking capacity AC	Rated breaking capacity DC	Power dissipation at I <sub>n</sub>	Weight
BTF42V200M250	X226317	415 V	240 V	200M250 A	190000 A <sup>2</sup> s	532000 A <sup>2</sup> s	80 kA	40 kA	19.2 W	0.29 kg
BTF42V200M315	Y226318	415 V	240 V	200M315 A	270000 A <sup>2</sup> s	7560000 A <sup>2</sup> s	80 kA	40 kA	19.7 W	0.29 kg

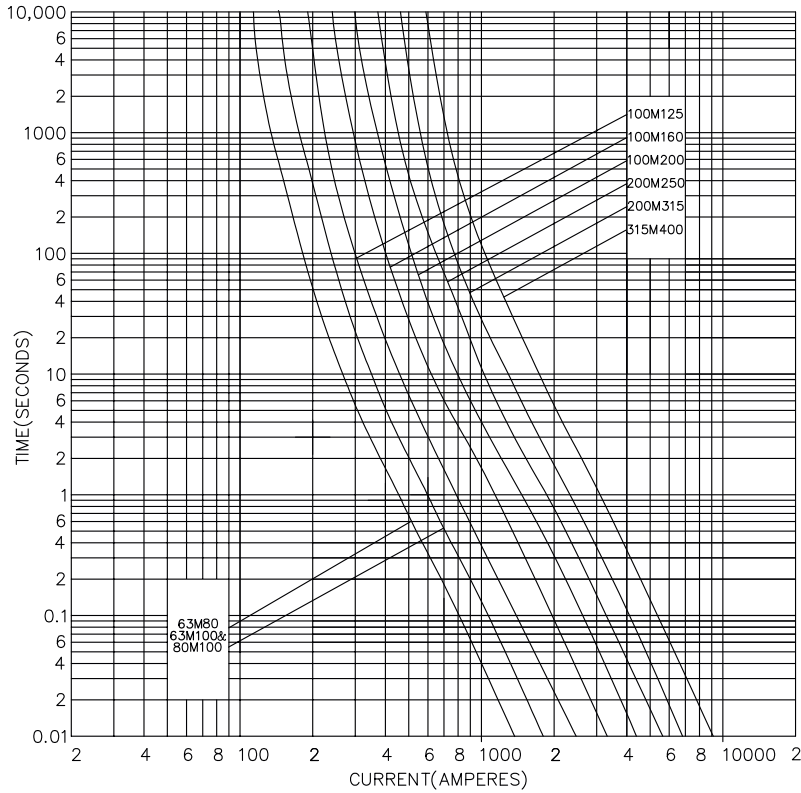
### Type B3 415VAC/240VDC gM BTFK 2 hole

Catalog number	Item number	Rated voltage AC (IEC)	Rated voltage DC (IEC)	Current rating In M Ich	Pre-arcing I <sup>2</sup> t	Clearing I <sup>2</sup> t at Rated Voltage	Rated breaking capacity AC	Rated breaking capacity DC	Power dissipation at I <sub>n</sub>	Weight
BTFK42V315M400	B226321	415 V	240 V	315M400 A	505000 A <sup>2</sup> s	1414000 A <sup>2</sup> s	80 kA	40 kA	30 W	0.62 kg

# Central Bolted fuse-links gM 415VAC/240VDC

## TIME CURRENT CHARACTERISTIC CURVES

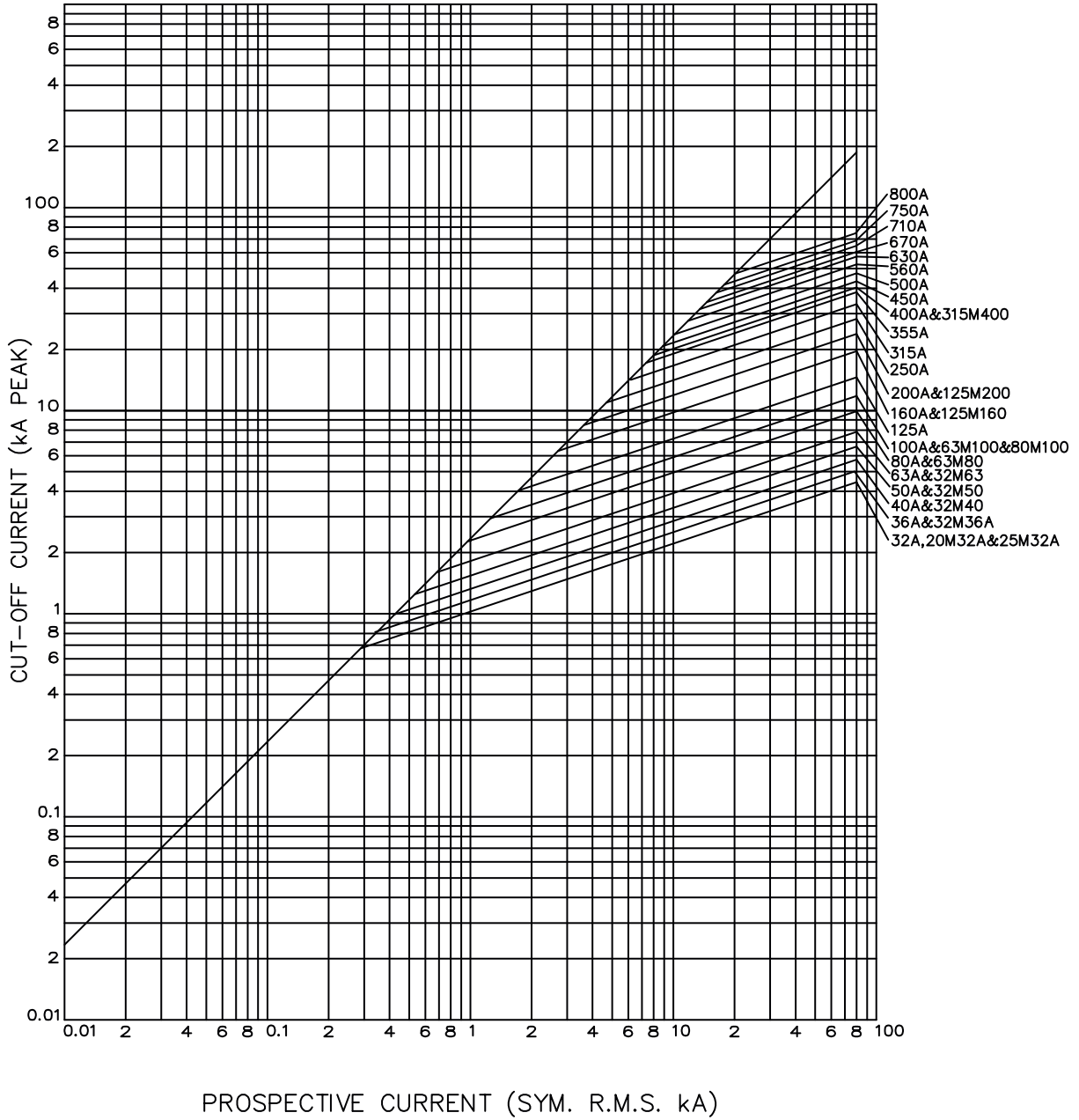
**gM curves - 63M80 to 315M400 A - 415VAC / 240VDC**



# Central Bolted fuse-links gM 415VAC/240VDC

## CUT-OFF CURRENT CHARACTERISTIC

### B Type - 415VAC

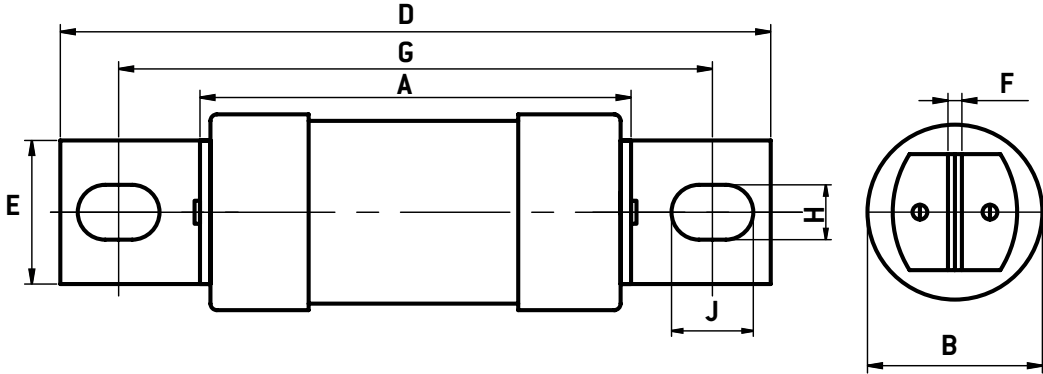


# Central Bolted fuse-links gM 415VAC/240VDC

## DIMENSIONS

**B1C BTSDC / B1C BTC / B1C BTF / B2 BTF / B3 BTKF**

Dimensions in mm



Dimensions in mm

Fig.	BS REF	Fuse Type	Current rating (A)	A MAX	B MAX	D MAX	E MAX	F NOM	G NOM	H NOM	J NOM
1	B1C	BTC	100M125, 100M160	57	26.9	137	19.5	3.2	111	8.7	14
1	B1C	BTC/BTF	100M200	47	31	136	19	3,2	111	9	12.5
1	B1C	BTSDC	63M80, 63M100, 80M100, 100M125	58.5	21	137	14.3	3.2	111	8.7	11.1
1	B2	BTF	200M250, 200M315	73	41.9	138	19.5	3.2	111	8.7	14
1	B3	BTKF	315M400	75	59.1	138	26	4.8	111	8.7	14