

BS Street Lighting Fuses gG 240VAC

LOW VOLTAGE IEC FUSES

BS FUSE-LINKS



Mersen's range of street lighting fuses is carefully designed to respond effectively and reliably to the diverse needs encountered in street lighting. This diverse range aims to provide optimum protection and secure management of the power supply, guaranteeing users peace of mind in the face of everyday electrical challenges.

TECHNICAL DATA OVERVIEW

Current Range In	2 to 32 A
Rated voltage AC (IEC)	240 V
Breaking capacity AC	16,5 to 33 kA
Speed/Characteristic	gG
Body Material	Ceramic
BS type	BLST, BLD

FEATURES & BENEFITS

- Reliability
- Immediate isolation
- Ensures fire safety

APPLICATIONS

- Street lighting

STANDARDS

- IEC 60269-1 & -2
- BS 88-1 & 2



BS Street Lighting Fuses gG 240VAC

PRODUCT RANGE



BLST24V10

Street Lighting Fuses gG 240VAC - BLST

Catalog number	Item number	Rated voltage AC (IEC)	Rated current I _n	Pre-arcing I ² t	Clearing I ² t at Rated Voltage	Rated breaking capacity AC	Power dissipation at I _n	Package
BLST24V2	D1065685	240 V	2 A	0.6 A ² s	1 A ² s	33 kA	1.02 W	10
BLST24V4	E1065686	240 V	4 A	5 A ² s	7 A ² s	33 kA	1.29 W	10
BLST24V6	F1065687	240 V	6 A	10 A ² s	16 A ² s	33 kA	1.33 W	10
BLST24V10	G1065688	240 V	10 A	29 A ² s	67 A ² s	33 kA	1.4 W	10
BLST24V16	H1065689	240 V	16 A	152 A ² s	348 A ² s	33 kA	1.79 W	10
BLST24V20	J1065690	240 V	20 A	533 A ² s	1225 A ² s	33 kA	1.04 W	10
BLST24V25	K1065691	240 V	25 A	725 A ² s	1668 A ² s	33 kA	1.8 W	10
BLST24V32	L1065692	240 V	32 A	947 A ² s	2178 A ² s	33 kA	2.64 W	10



BLD24V30

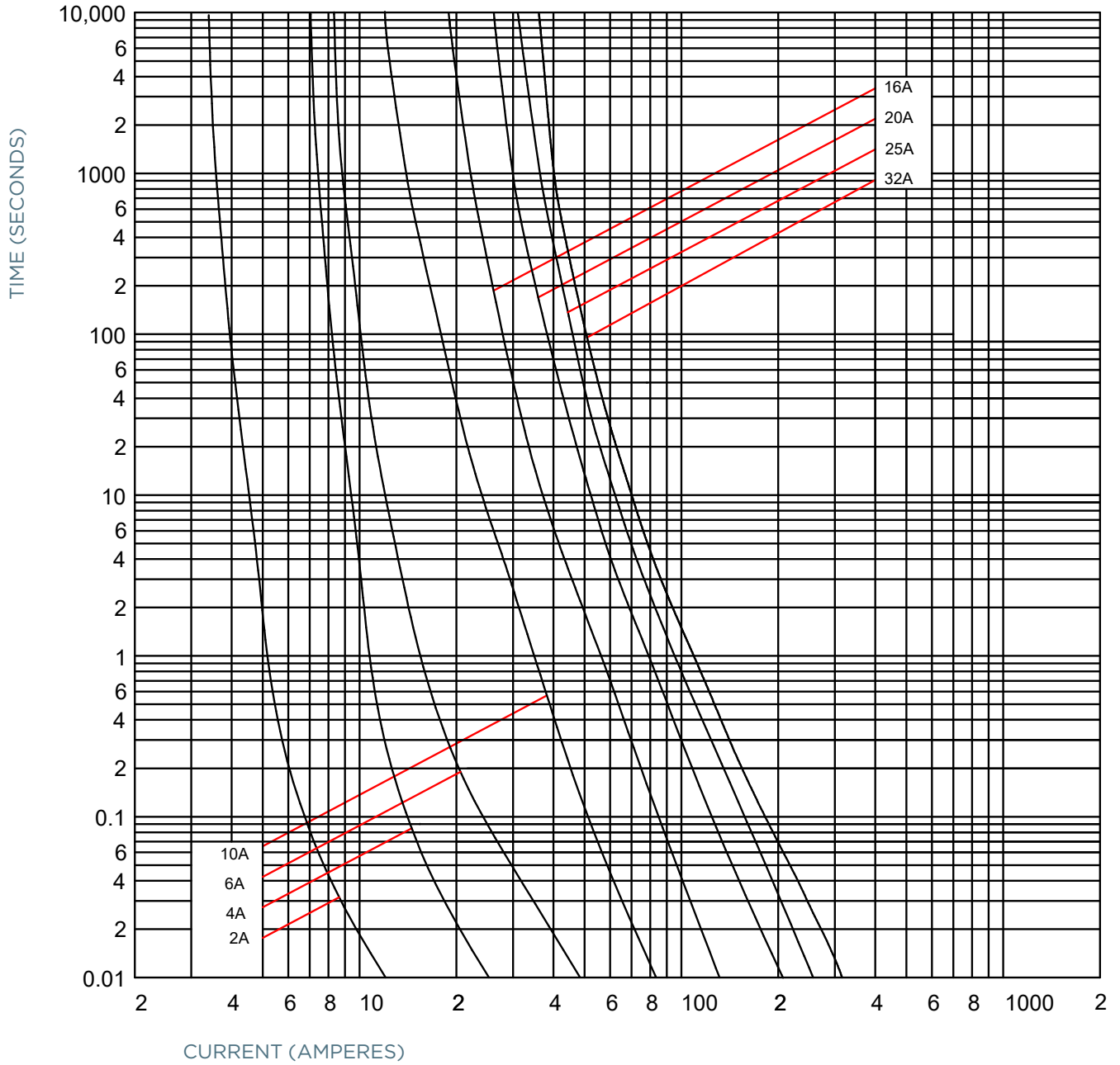
Street Lighting Fuses gG 240VAC - BLD

Catalog number	Item number	Rated voltage AC (IEC)	Rated current I _n	Pre-arcing I ² t	Clearing I ² t at Rated Voltage	Rated breaking capacity AC	Power dissipation at I _n	Package
BLD24V6	M1065693	240 V	6 A	13 A ² s	20 A ² s	16.5 kA	1.98 W	10
BLD24V10	N1065694	240 V	10 A	25 A ² s	63 A ² s	16.5 kA	1.53 W	10
BLD24V16	P1065695	240 V	16 A	204 A ² s	510 A ² s	16.5 kA	1.54 W	10
BLD24V20	Q1065696	240 V	20 A	459 A ² s	1148 A ² s	16.5 kA	1.54 W	10
BLD24V25	R1065697	240 V	25 A	625 A ² s	1563 A ² s	16.5 kA	2.14 W	10
BLD24V30	T1065699	240 V	30 A	816 A ² s	2041 A ² s	16.5 kA	2.85 W	10

BS Street Lighting Fuses gG 240VAC

TIME CURRENT CHARACTERISTIC CURVES

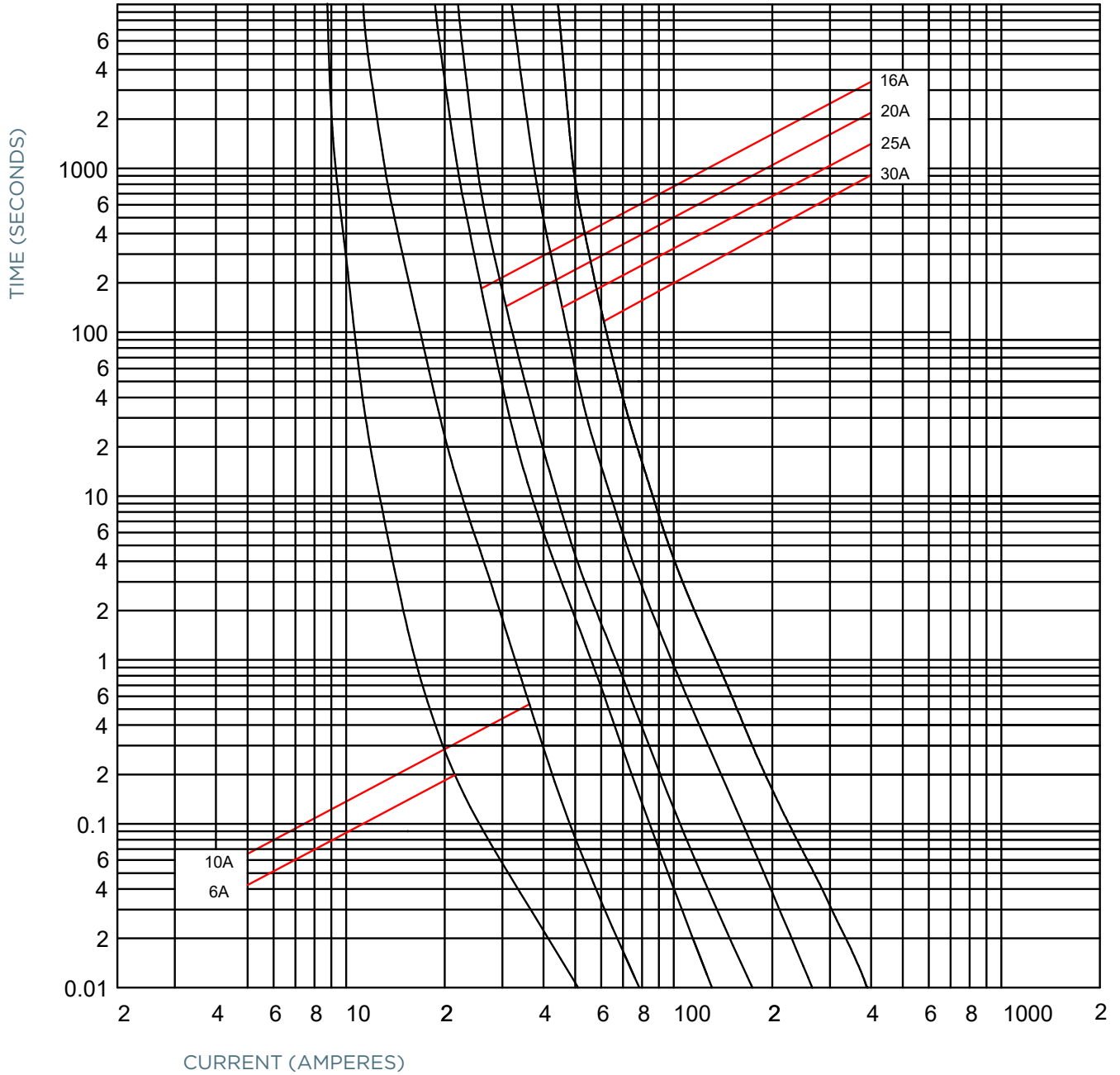
gG curve - 2 to 32 A - 240VAC BLST



BS Street Lighting Fuses gG 240VAC

TIME CURRENT CHARACTERISTIC CURVES

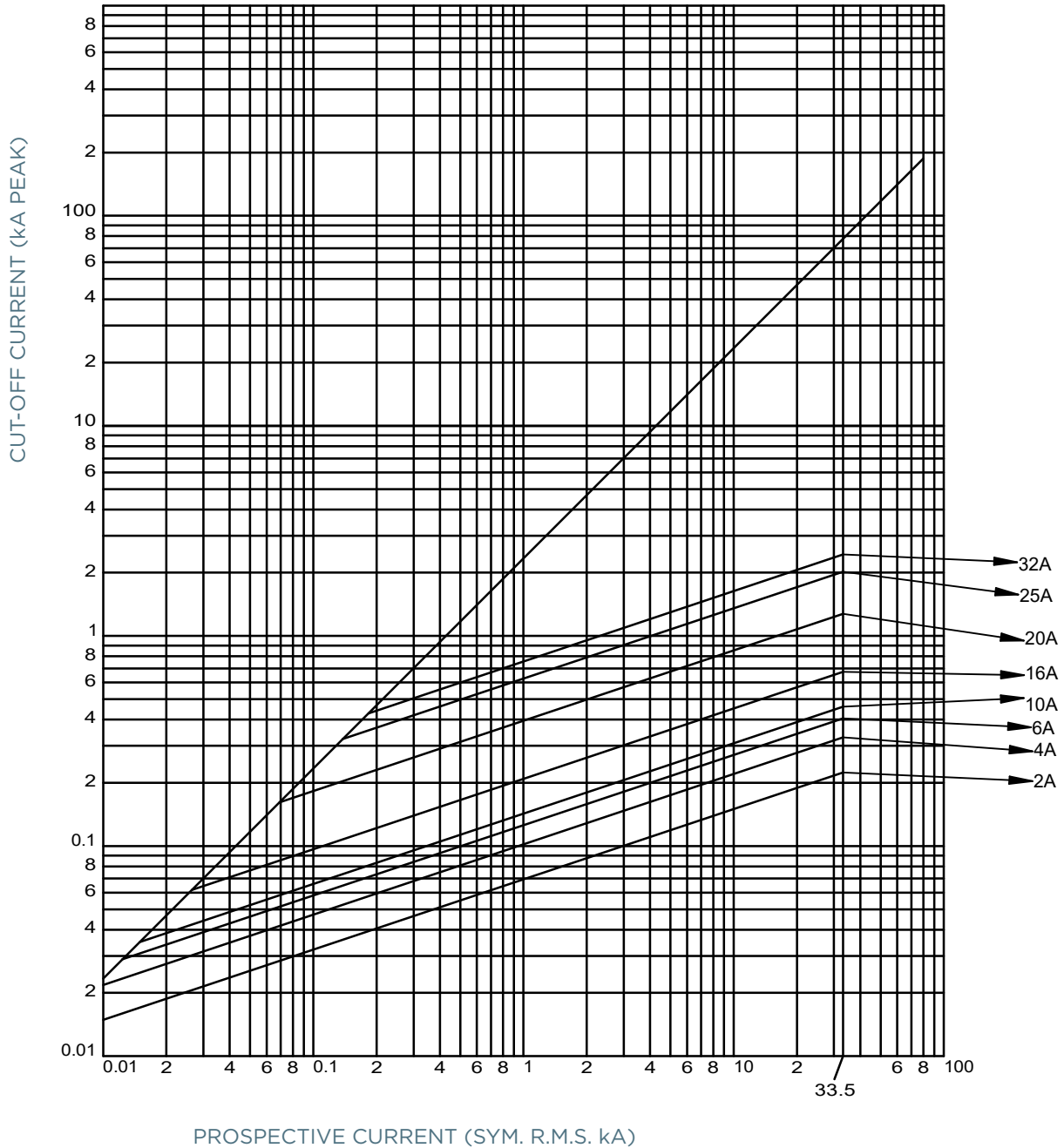
gG curve - 6 to 30 A - 240VAC BLD



BS Street Lighting Fuses gG 240VAC

CUT-OFF CURRENT CHARACTERISTIC

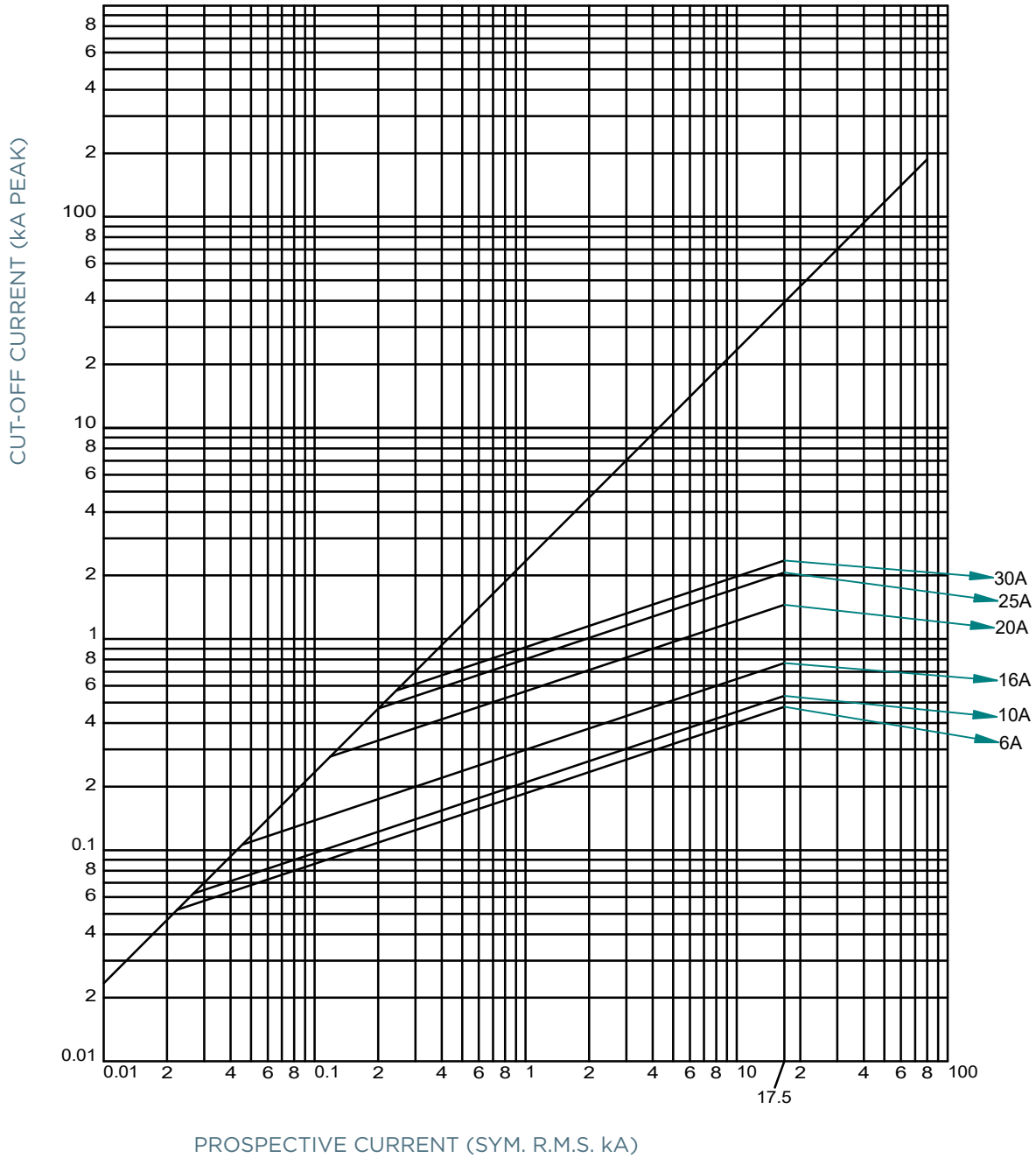
gG curve - 2 to 32 A - 240VAC BLST



BS Street Lighting Fuses gG 240VAC

CUT-OFF CURRENT CHARACTERISTIC

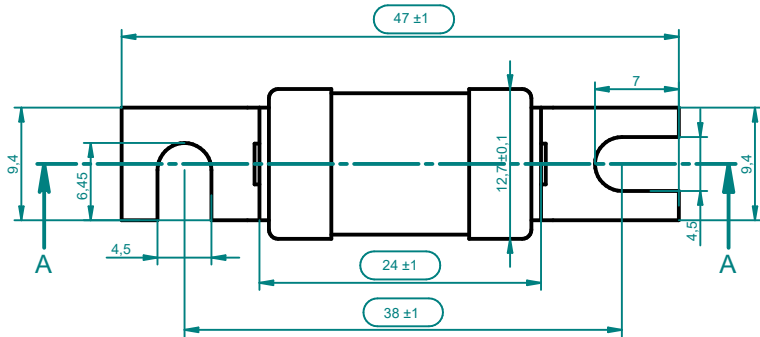
gG curve - 6 to 30 A - 240VAC BLD



BS Street Lighting Fuses gG 240VAC

DIMENSIONS

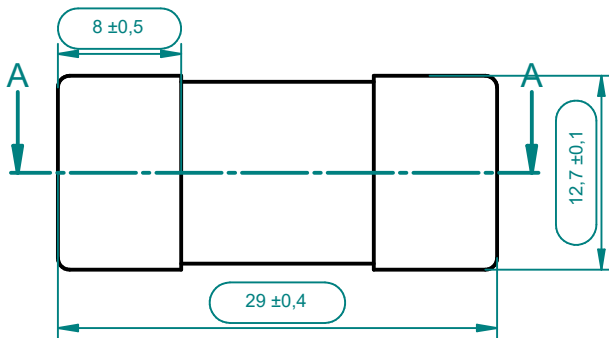
BLST - 2 to 32 A - 240VAC



Dimensions in mm

BLD - 10 to 25 A - 240VAC

Dimensions in mm



Dimensions in mm

Fig.	Fuse Type	Current rating (A)	A MAX	B MAX	C MAX	D MAX	E MAX	F MAX	G MAX	H MAX
1	BLST	2, 4, 6, 10, 16, 20, 25, 32	24.4	12.8	8.5	47.4	9.65	0.83	38.4	15
2	BLD	6, 10, 16, 20, 25, 32	29.4	12.8	8.5					