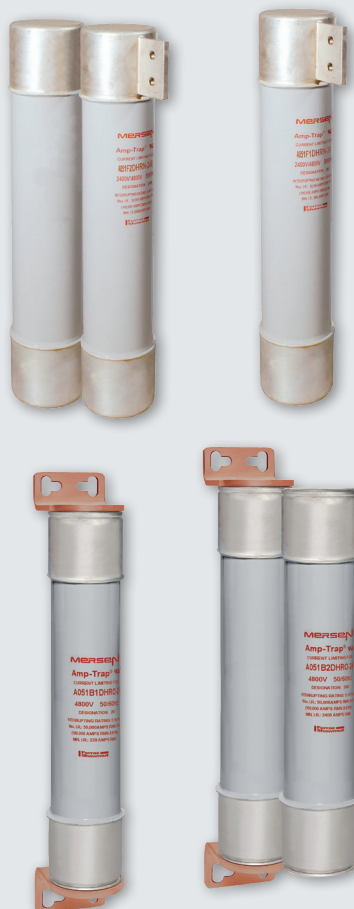


MERSEN
Expertise, our source of energy

MERSEN
MEDIUM
VOLTAGE FUSES
FOR AMPGARD
MCCs



MERSEN MEDIUM VOLTAGE FUSES FOR AMPGARD MCCs

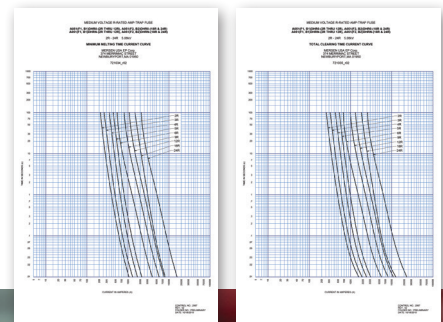
FUSE CROSS REFERENCE

Use the following cross reference to identify the appropriate Mersen Amp-Trap fuse for your Ampgard application.

FERRULE		BOLT-IN	
Eaton Part #	Mersen Part #	Eaton Part #	Mersen Part #
5ACLS -2R	A051F1DHR0-2R	5BCLS -2R	A051B1DHR0-2R
5ACLS -3R	A051F1DHR0-3R	5BCLS -3R	A051B1DHR0-3R
5ACLS -4R	A051F1DHR0-4R	5BCLS -4R	A051B1DHR0-4R
5ACLS -5R	A051F1DHR0-5R	5BCLS -5R	A051B1DHR0-5R
5ACLS -6R	A051F1DHR0-6R	5BCLS -6R	A051B1DHR0-6R
5ACLS -9R	A051F1DHR0-9R	5BCLS -9R	A051B1DHR0-9R
5ACLS -12R	A051F1DHR0-12R	5BCLS -12R	A051B1DHR0-12R
5ACLS -18R	A051F1DHR0-18R	5BCLS -18R	A051B2DHR0-18R
5ACLS -24R	A051F1DHR0-24R	5BCLS -24R	A051B2DHR0-24R

When replacing backup fuses in the field, it is good practice to always check overload relay settings and the coordination between the relay and new fuse as a safety check.

Mersen fuse curves differ slightly from Bussmann fuse curves and are available on the Mersen EP website. Mersen’s Technical Services group can also assist with fuse curves and fuse selection.



INTRODUCTION

There are plenty of industrial applications that utilize medium voltage motors and motor control centers. The markets for these applications continue to grow, especially with recent infrastructure legislation and funding, high prices of petrochemical products, and strong demand for materials and commodities. Mersen has a strong presence in medium voltage motor controls with their high performing, current-limiting, backup fuses. These fuses are needed to protect equipment and motors from high levels of fault current and are designed to coordinate with overload protection within motor starters.

Mersen has a line of Amp-Trap branded fuses that are specifically designed for Westinghouse / Eaton's Ampgard series of motor control centers. These fuses are also direct crosses to Bussmann's 5ACLS and 5BCLS fuse lines. Ampgard gear is used all over North America for a variety of industrial applications, and these Mersen fuses can provide critical motor protection in the gear for MCC expansions, new installations, and aftermarket replacements of existing Bussmann or Mersen fuses. The ferrule-mount design with convenient hookkey attachment also makes this fuse a strong option for use in other motor protection gear and applications.



5kV FERRULE MOUNTED FUSES FOR AMPGARD MCCs

Ratings:

- Voltage: 5.08kV maximum
- Current ratings: 2R - 24R
- Maximum IR: 50kA at 5.08kV
- UL Recognized

Features:

- Current-limiting performance
- Direct cross to Bussmann's 5ACLs series of fuses
- 3" diameter ferrule mounting allows use of standard fuse clip parts
- Hookeye feature for non-load break isolation by hookstick
- Metal embossed catalog number and manufacturing date for lasting identification
- Visual blown-fuse indication (Also available without blown-fuse indication for application in Class 1, Division 2 locations per NEC 501.115(B)(3))

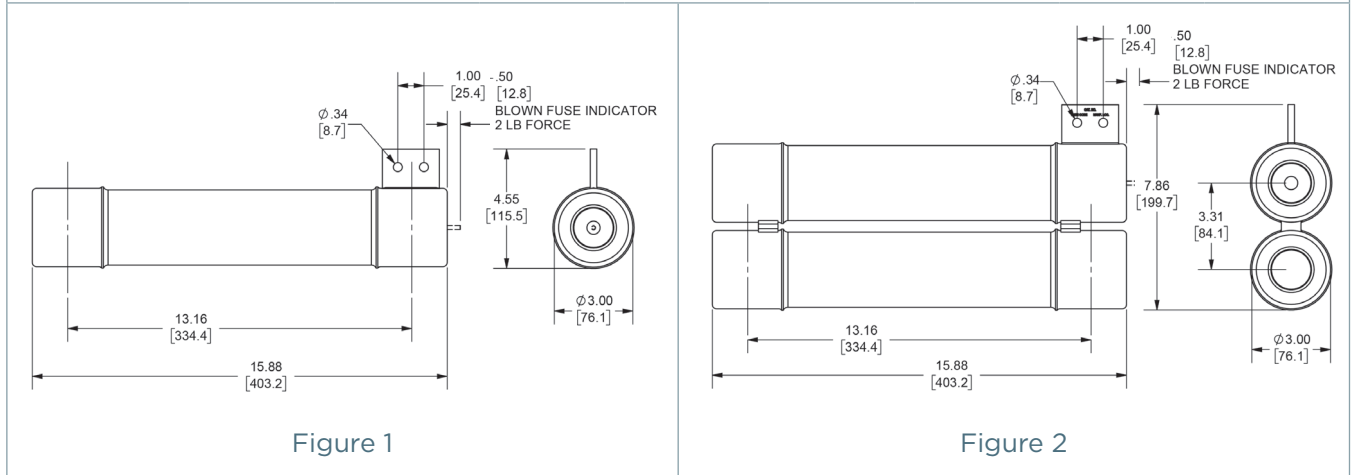


5.08kV R-Rated Amp-Trap Ferrule Mount w/ Hookeye, for use in Ampgard Switchgear



Catalog No.	Size	Continuous Amp rating at 40°C	Rated Minimum Interrupting Current	No. of Barrels	Fig.	Indicating	Dimension L Inches (mm)	UL Component Recognition Max IR RMS Sym
A051F1DHR0-2R	2R	70	220	1	1	Yes**	15.88 [403.2]	50kA @5.08kV
A051F1DHR0-3R	3R	100	270					
A051F1DHR0-4R	4R	130	360					
A051F1DHR0-5R	5R	150	450					
A051F1DHR0-6R	6R	170	600					
A051F1DHR0-9R	9R	200	900					
A051F1DHR0-12R	12R	230	1200					
A051F2DHR0-18R	18R	390	1500	2	2			
A051F2DHR0-24R	24R	450	2200					

** All part numbers available without indication by substituting "DHR0" w/ "DHRN". Example: A051F1DHRN-24R



5kV BOLT-IN FUSES FOR AMPGARD MCCs

Ratings:

- Voltage: 5.08kV maximum
- Current ratings: 2R - 24R
- Maximum IR: 50kA at 5.08kV
- UL Recognized

Features:

- Current-limiting performance
- Direct cross to Bussmann's 5BCLS series of fuses
- Matching bolt-hole pattern to Bussmann cross for direct footprint replacement
- Visual blown-fuse indication (Also available without blown-fuse indication for application in Class 1, Division 2 locations per NEC 501.115(B) (3))

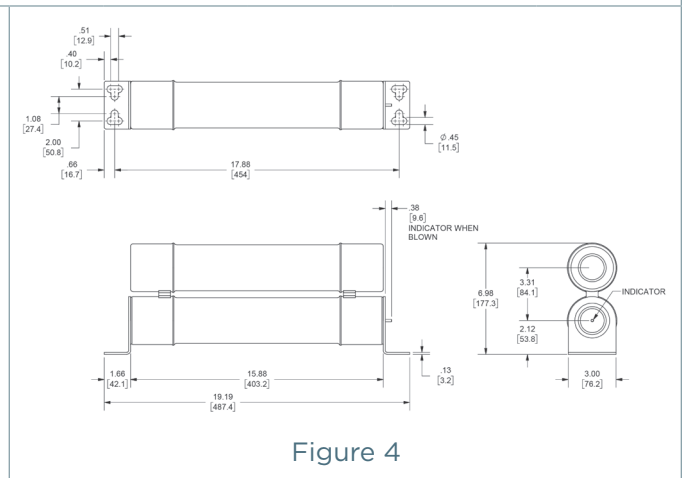
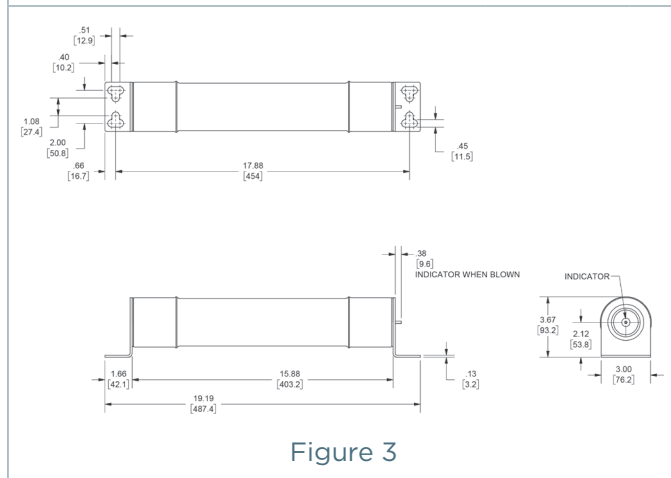


5.08kV R-Rated Amp-Trap Bolt-In Series, for use in Ampgard Switchgear



Catalog No.	Size	Continuous Amp rating at 40°C	Rated Minimum Interrupting Current	No. of Barrels	Fig.	Indicating	Dimension L Inches/ (mm)	UL Component Recognition Max IR RMS Sym
A051BDHRO-2R	2R	70	220	1	3	Yes**	15.88 (403.2)	50kA @5.08kV
A051BDHRO-3R	3R	100	270					
A051BDHRO-4R	4R	130	360					
A051BDHRO-5R	5R	150	450					
A051BDHRO-6R	6R	170	600					
A051BDHRO-9R	9R	200	900					
A051BDHRO-12R	12R	230	1200					
A051B2DHR0-18R	18R	390	1500	2	4			
A051B2DHR0-24R	24R	450	2200					

** All part numbers available without indication by substituting "DHR0" w/ "DHRN". Example: A051BDHRN-24R





MERSEN IS A GLOBAL EXPERT
IN ELECTRICAL POWER AND
ADVANCED MATERIALS

NORTH AMERICA

USA
Mersen USA
374 Merrimac Street
Newburyport, MA 01950
T : +1 978 462 6662

CANADA
Mersen Canada
6200 Kestrel Road
Mississauga, ON L5T 1Z1
T : +1 416 252 9371

EUROPE

FRANCE
Mersen France SB S.A.S.
15 rue Jacques de Vaucanson
F-69720 Saint-Bonnet-de-Mure
T : +33 4 72 22 66 11

ASIA

CHINA
Mersen Shanghai
No.55-A6. Shu Shan Road
Songjiang 201611 Shanghai
T : +86 21 6760 2388



EP.MERSEN.COM