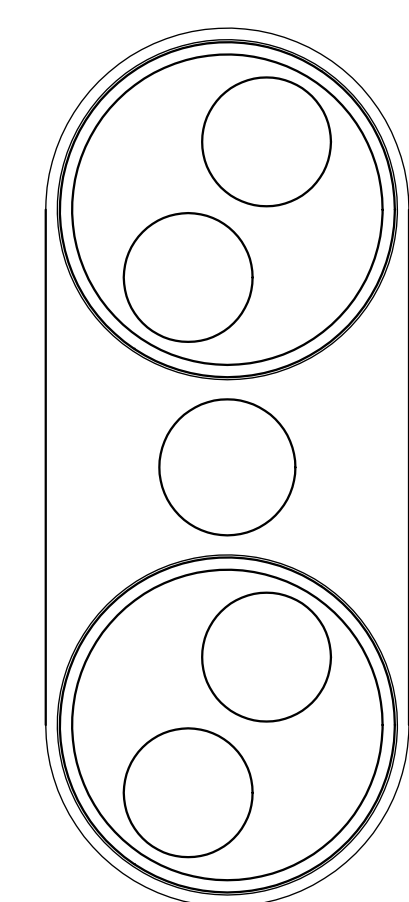
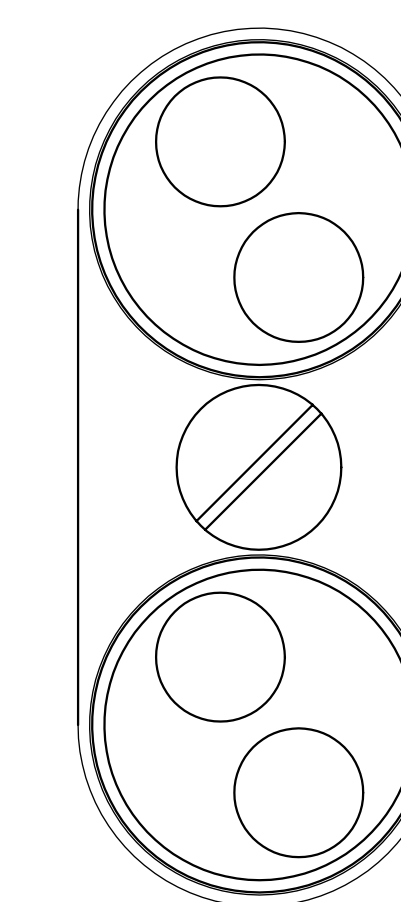
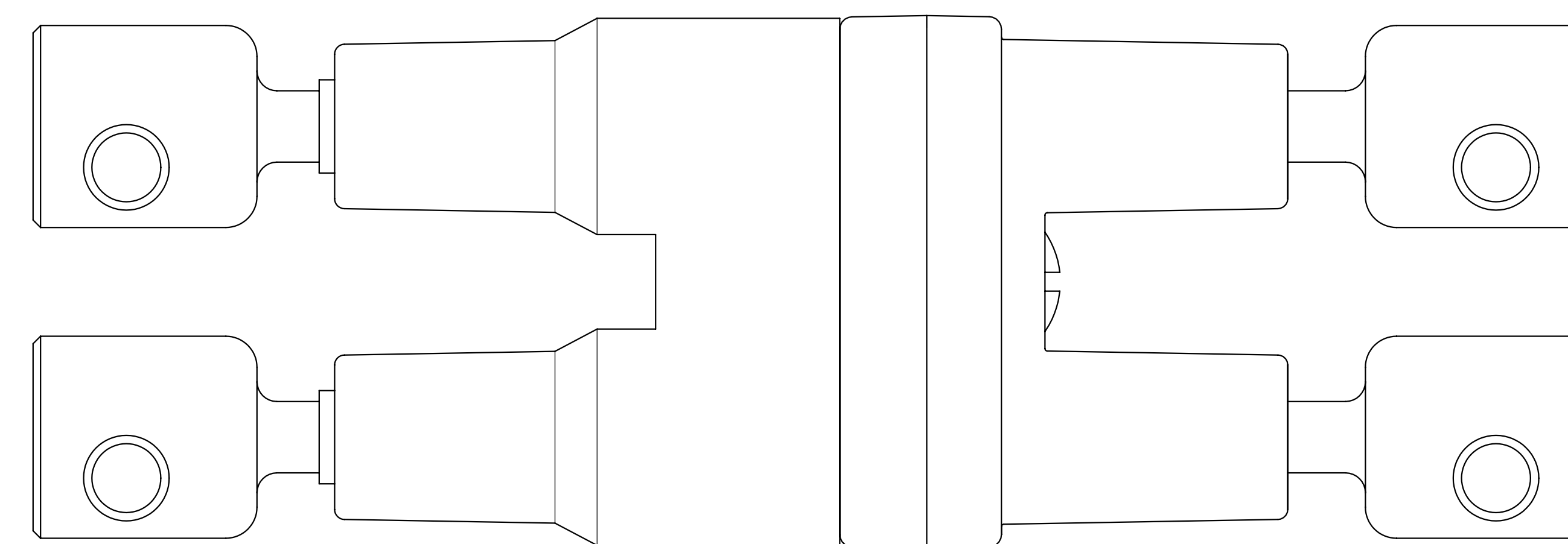


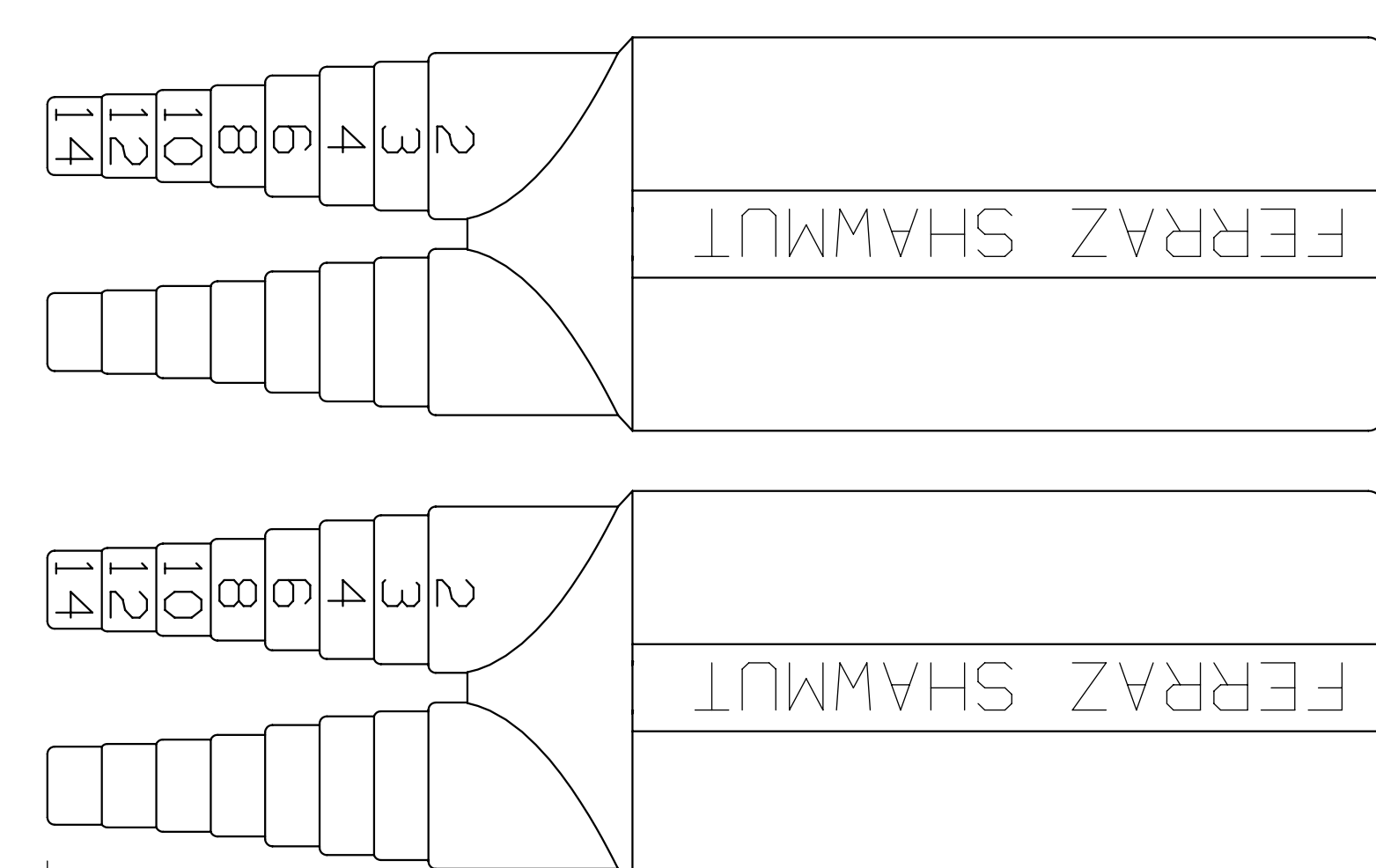
REV	DATE	ECO	DESCRIPTION	BY	CK	APP
-	5/30/08	N/A	INITIAL RELEASE	LDB	N/A	N/A



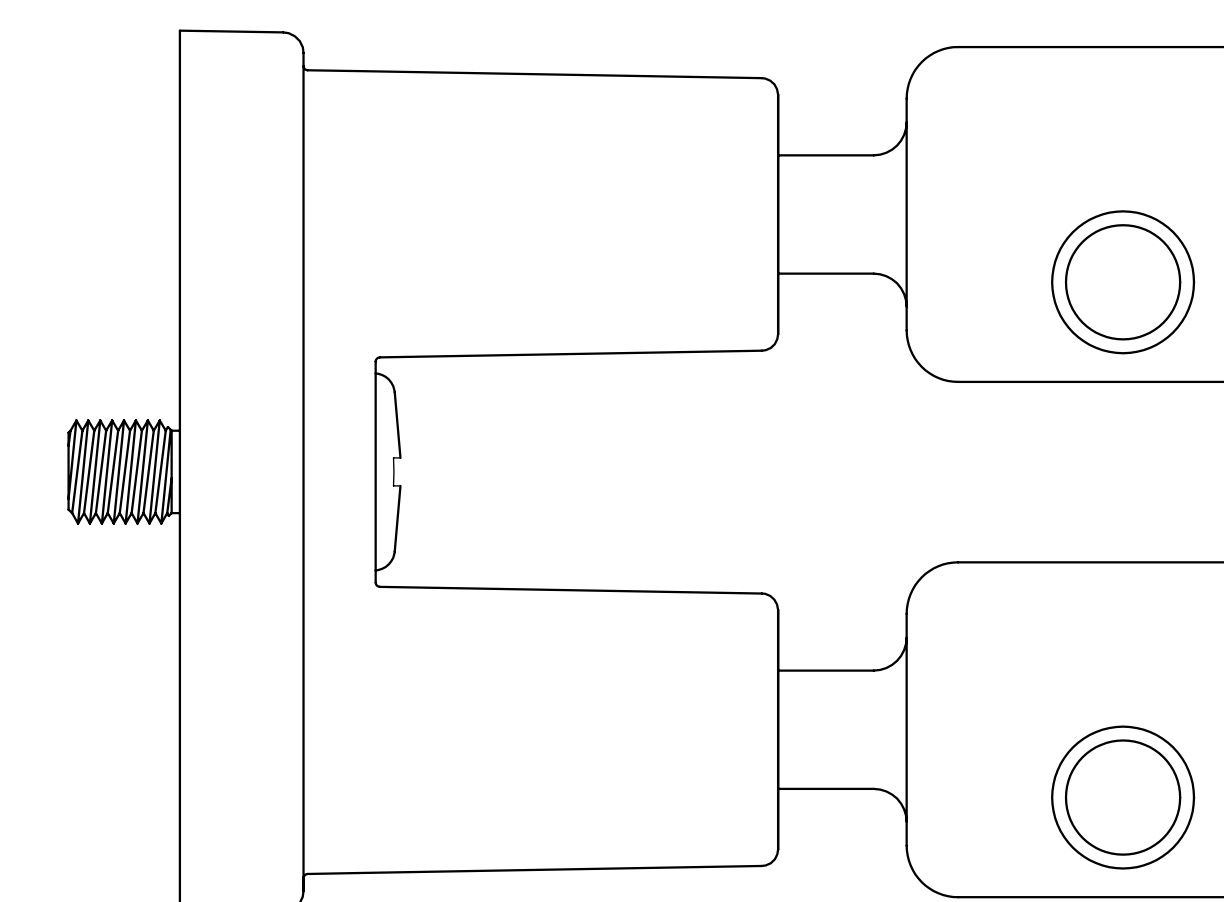
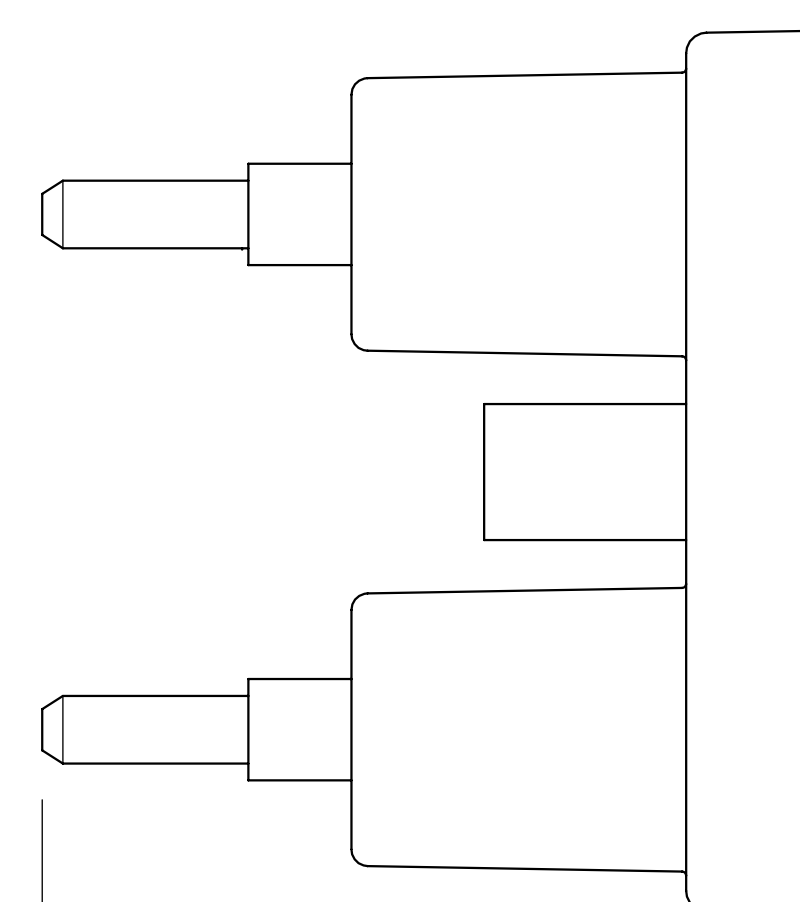
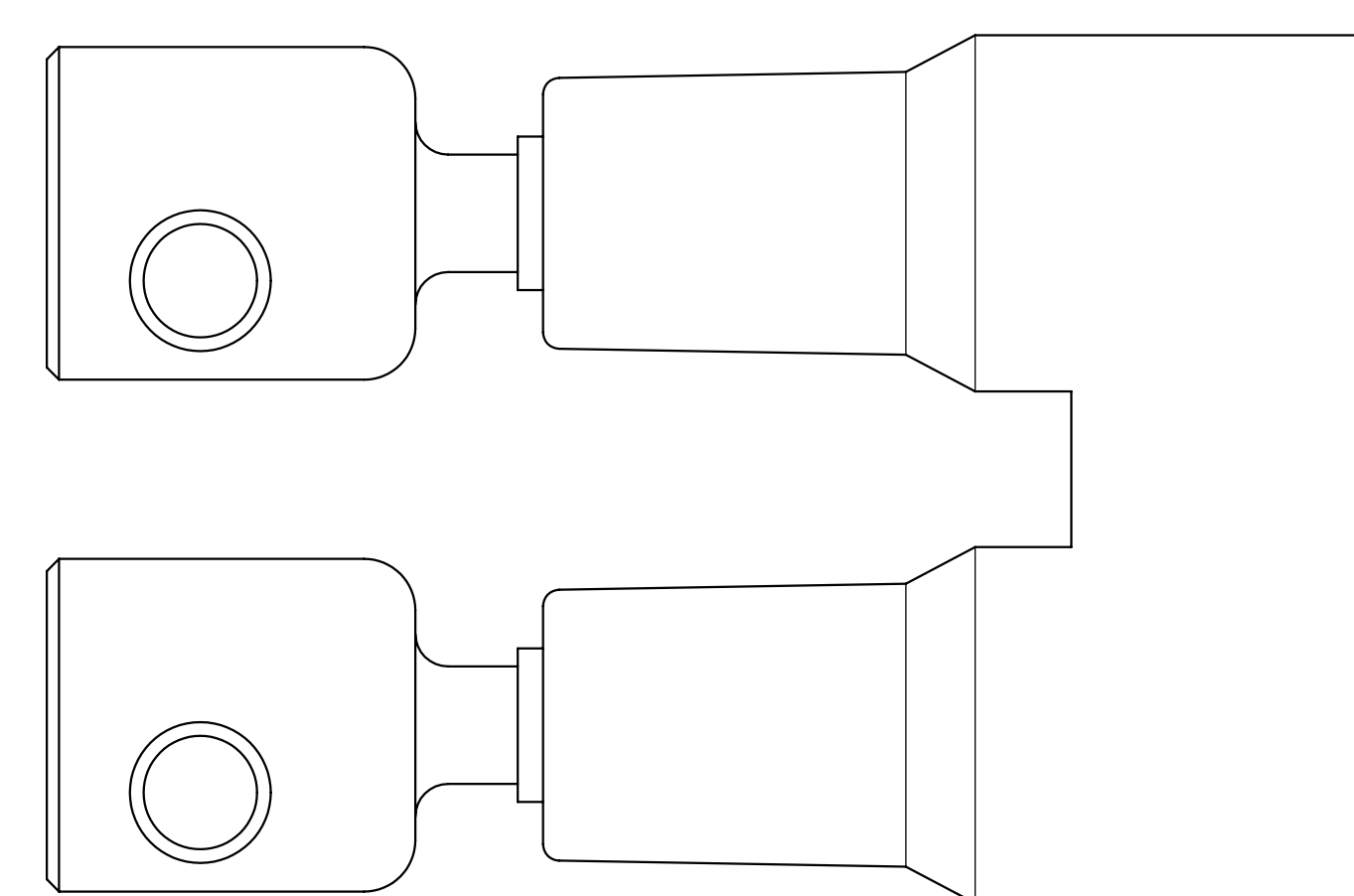
91



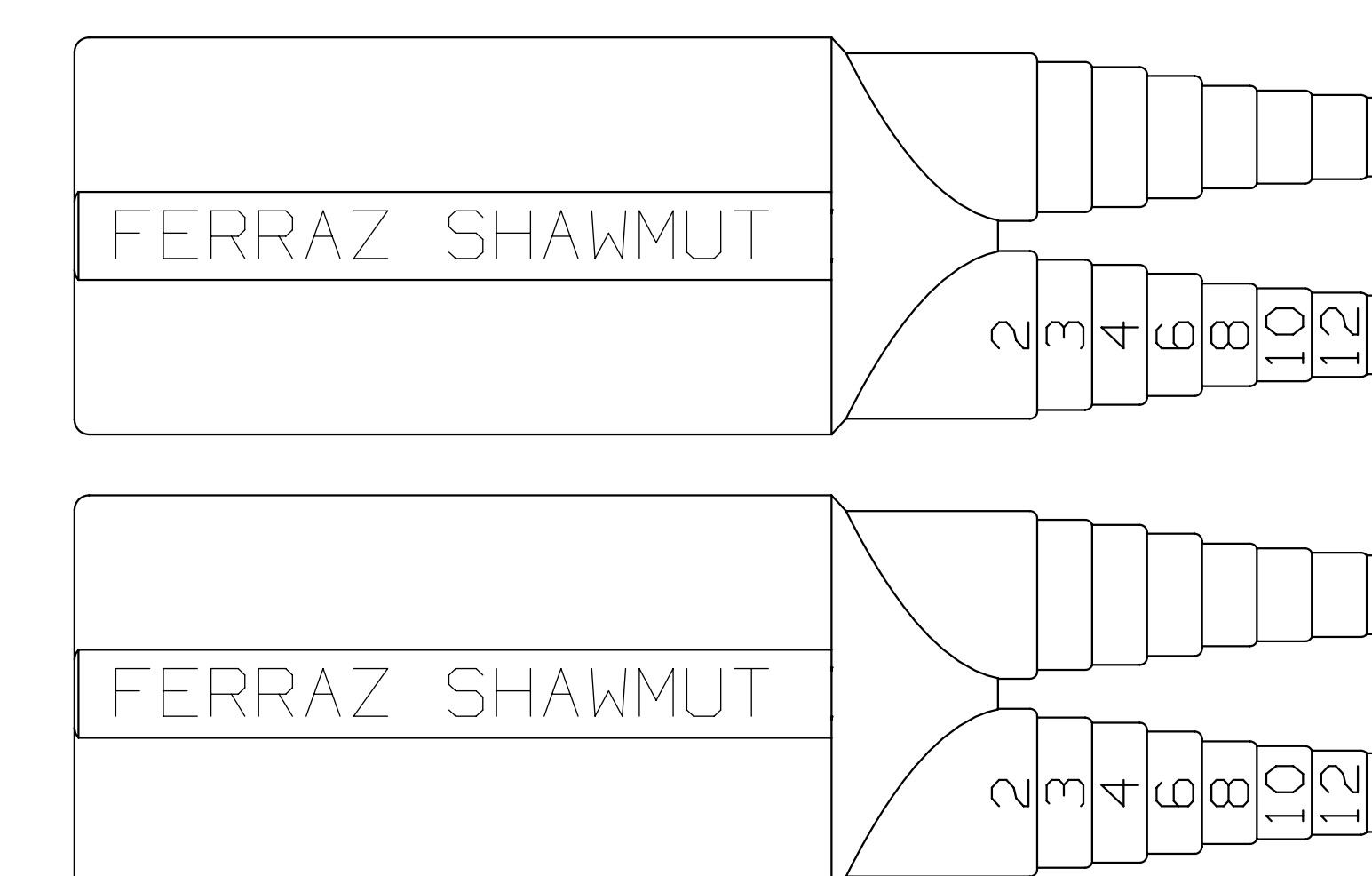
91



(FSB2 BOOT)



LOAD →



(FSB2 BOOT)

4.6" (116.2mm)

6.3" (160mm) ASSEMBLED LENGTH

8.7" (221mm) ASSEMBLED LENGTH

P/N	AMPERE RATING	RMS SYM RATING	CONN TYPE	TORQUE (LBS-IN)	WIRE			UL		CSA	
					WIRE RANGE	°C	TYPE	FILE NO.	GUIDE NO.	FILE NO.	CLASS
FEX-91-91-BA	30	100,000	91-Cu DOUBLE SET SCREW	50 35 25 20	{1} #2-3 SOL/STR {1} #4-6 SOL/STR {1} #8 SOL/STR {1} #10-12 SOL/STR	75	Cu	E52283	IZLT2	32169	6225



MERSEN USA NEWBURYPORT-MA, LLC
374 MERRIMAC STREET
NEWBURYPORT, MA 01950

FUSE HOLDER, 600V-30A,
2 POLE, IN-LINE,
MIDGET
BREAKAWAY CONFIGURATION

OUTLINE DIMENSIONS
NOT TO BE USED FOR PRODUCTION

701442

PRODUCT MANAGER
SIGN:
DATE:

DESIGN ENGINEER
SIGN:
DATE: