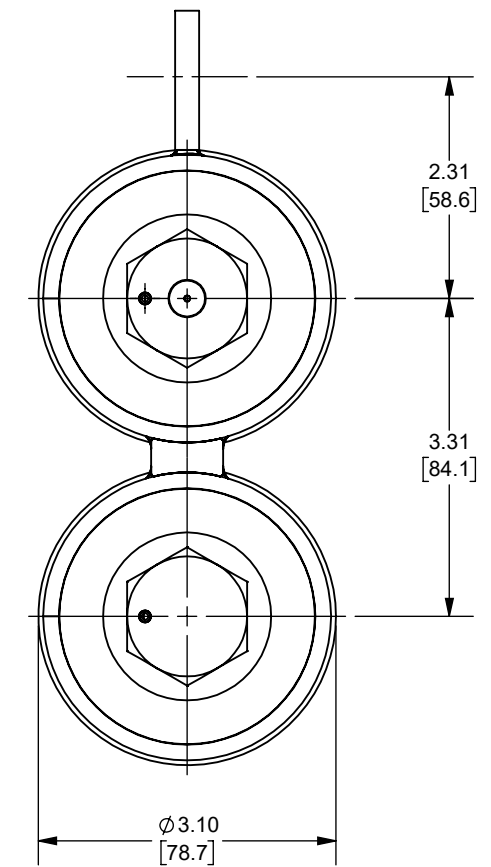
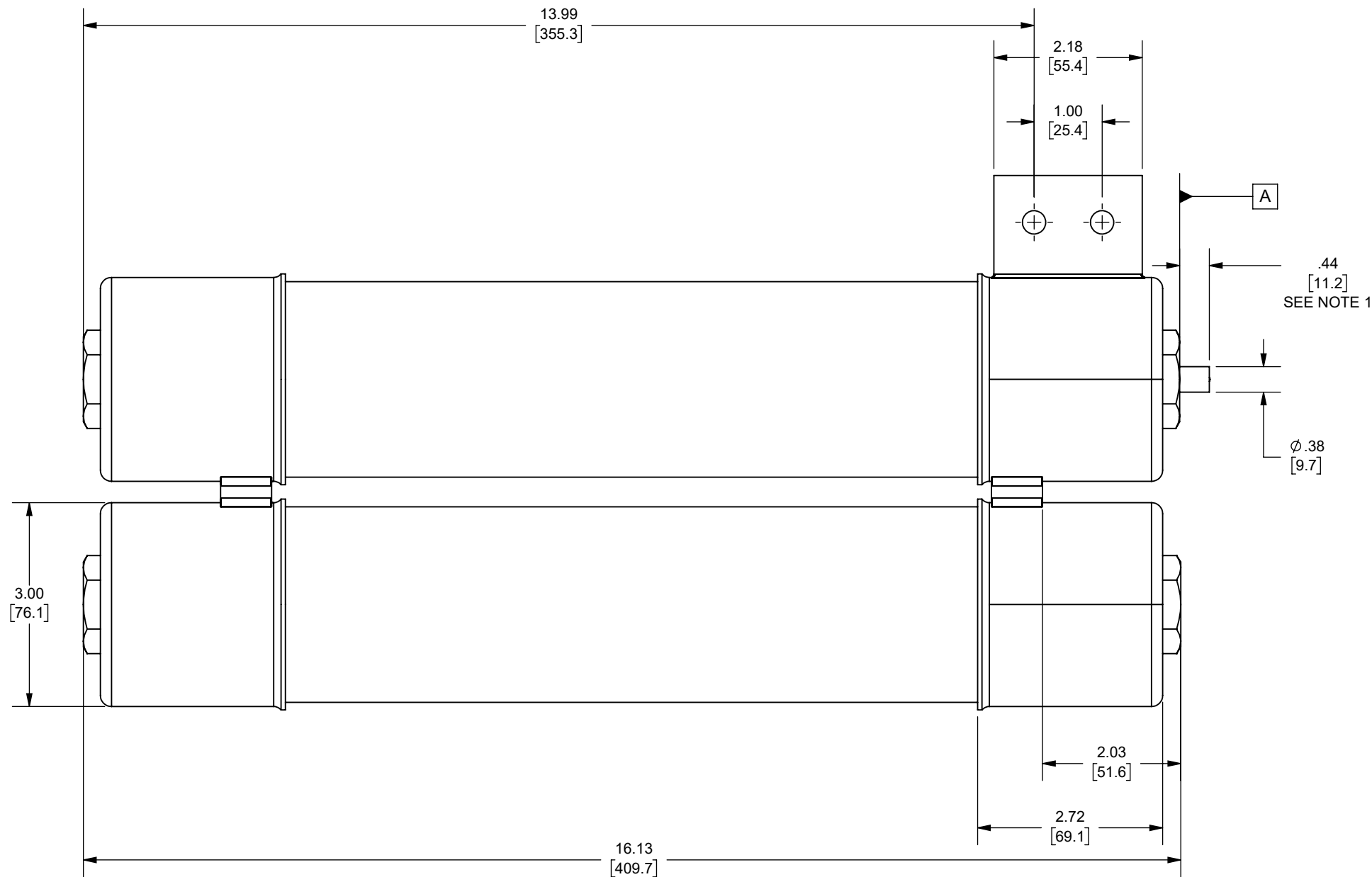


REV.	DATE	ECO	DESCRIPTION	BY	CK	APP
A	2/11/2008	N/A	UPDATED FORMAT; REDRAWN, WAS ON 24124 REV -	GDR	N/A	N/A
B	1/5/2024	18032	REDRAWN FROM CADRA, UPDATED TITLE BLOCK, ADDED NOTES, DIM .44 [11.2] WAS .50 [12.7], 1LBS FORCE WAS 2 LBS FORCE	YF	N/A	SEE ECO



OUTLINE DIMENSIONS
NOT TO BE USED FOR PRODUCTION

DIMENSIONS IN []
ARE MILLIMETERS

NOTES:

- INDICATOR IS FLUSH WITH SURFACE **A** BEFORE FUSE OPENS
INDICATOR EXTENDS .44 IN. [11.2mm] AFTER FUSE OPENS AND EXERTS
AN 1 LBF AT THE END OF TRAVEL

A480R24R-1HE
A480R18R-1HE
CATALOG NUMBER

Approval stage / Etat d'approbation: APPROUVÉ POUR FABRICATION / APPROVED FOR MANUFACTURING		Product Class:/ Product Type: MEDIUM VOLTAGE 1HE	
Initial ECO / ECO initiale: ECO-18032-000		Product amp rating:/ Voltage rating: 18-24R 5.08kV	
Draw by / Dessiné par: Yadyra Fang	Date : 6/14/2024	Title / Titre: OUTLINE A480R(18,24)R-1HE	Weight : Masse :
Checked by / Vérifié par: Luis ARMENTA	Date : 6/14/2024	Drawing / de dessin: 24124	Rev : Rév : B
Electrical Power 374 MERRIMAC STREET NEWBURYPORT, MA 01950	Éch / Scale : 1:2 Format / Size : B	Part / Article: SEE TABLE	Page : 1/1



Ce plan strictement confidentiel est la propriété exclusive de la société MERSEN sans l'autorisation écrite de laquelle il ne peut être ni reproduit, ni copié, ni communiqué à des tiers.
This drawing and specifications there on is property of MERSEN and shall not be reproduced or copied or used in whole or in part as the base for manufacture or sale of item without written permission.