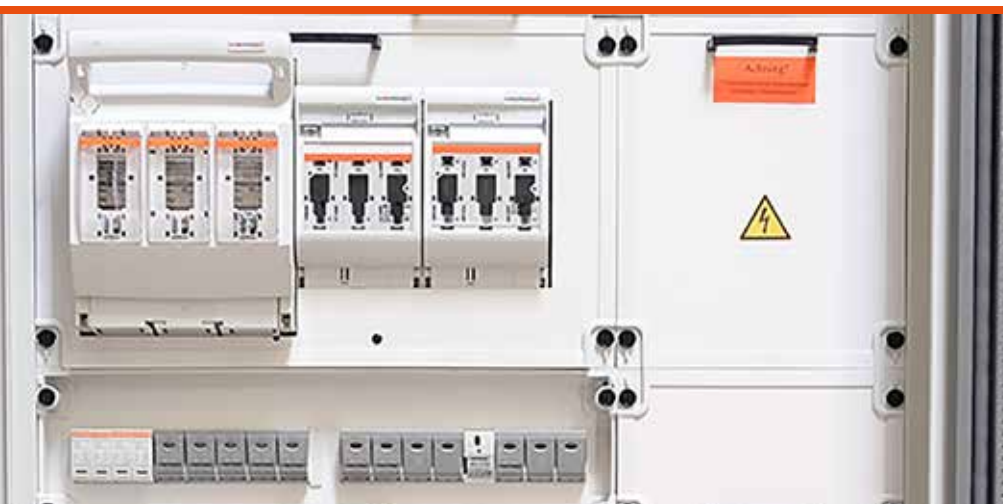


LINOCUR®

IEC DIN DO
SWITCH
DISCONNECTOR
FUSE



LINOCUR® DO SWITCH DISCONNECTOR FUSE

Size D02 63A 230VAC/440VAC,
IP 20, 50 kA

FEATURES & BENEFITS

- Lowest Power Dissipation
- Highly user-friendly and safe changing of the fuse
- Bayonet design of the screw cap for quick changing of the fuse in less than 3 seconds
- Easy installation (feeding from above and below)
- Double clamps connection on both sides 1.5mm to 35 mm for using wiring rails
- Dynamic tolerance compensation of the fuse-link length to guarantee excellent contact
- Complete IP20 Touch Protection
- Monitoring module available (switch position and/or fuse status)
- Modular system: 1 to 3+N poles, available with and without gaugepiece
- 1, 2, 3-pole and 1+N, 3+N units available
- Mounting on DIN rails according EN 60715

DO LINOCUR® D02 63A VERSIONS	1 PÔLE (WIDTH 27MM)	2 PÔLES (WIDTH 54MM)	3 PÔLES (WIDTH 81MM)	4 PÔLES (WIDTH 108MM)	1 PÔLE + 1 NEUTRAL (WIDTH 54MM)	3 PÔLES + 1 NEUTRAL (WIDTH 108MM)
230 to 400VAC or 65VDC per pole 220VDC	X	X	X		X	X
230VAC to 400VAC or 65VDC per pole with fuse-links and fixed gauge pieces	Available ratings: 20A, 25A, 35A, 50A	Available ratings: 25A, 35A, 50A	Available ratings: 25A, 35A, 50A			
250VAC to 440 VAC suitable for marine application	X	X	X			X

TECHNICAL DATA

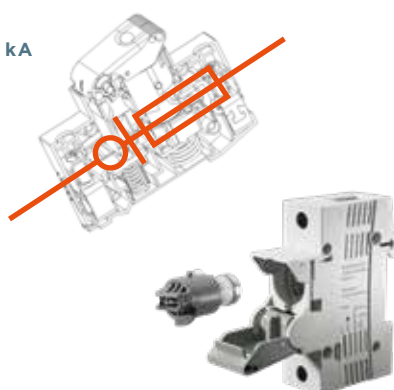
Size D02 63A 230VAC/440VAC, IP 20, 50 kA

AC 22B AC 400V 63A
DC 22B DC 65V/pole
AC 23B AC 400V 50A
AC 23B AC 440V 35A

APPLICATIONS

Low voltage power distribution for:

- process industries
- commercial
- residential



STANDARDS

- EN/IEC 60947-3
- DIN VDE 43880
- DIN VDE 0660 Part 107
- DIN VDE 0638
- DIN VDE 0636 Part 3
- IEC 60269-3

Mersen D0 Linocur® is a compact combination of a D0 fuse-base and a switch-disconnector® with a rated current of 63 A at ~440V, equipped with significant safety characteristics and sophisticated switching and terminal technology.

Voltage	1 pole	AC 230V
	2-, 3-, 4-, pole	AC 400V
	marine application	AC 440V
	per pole	DC 65V
Ampere Range (A)	20 ... 63A	
Breaking capacity	50 kA	
Protection	IP 20	
SCCR	AC 22B	AC 400V 63A
	DC 22B	DC 65V/pole
	AC 23B	AC 400V 50A
	AC 23B	AC 440V 35A
Mounting	Din rail acc. EN 60715	
Product Size	D02	
Number of Poles	1-, 2-, 3-polar 2-polar (1+N) 4-polar (3+N)	
Pollution degree	3	
Overvoltage category	IV	
Rated frequency	50 ... 60 Hz	
Rated impulse withstand voltage U_{imp}	6 kV	
Power dissipation	63A: phase=1.8W, neutral=1.4W	

VARIETIES OF CABLE TERMINAL CONNECTION

- flexible wiring with conductor end sleeves**
 - two wires of same cross-section: up to max. 16 mm²
 - two different wires: 25 mm² and max. 6 mm²
35 mm² and max. 4 mm²
 - with paired conductor end sleeves: up to max. 16 mm²
- flexible, thin-wire wires without conductor end sleeves**
 - two wires of same cross-section: up to max. 16 mm²
 - two different wires: 25 mm² and max. 16 mm²
35 mm² and max. 10 mm²
- short-circuit resistant wires**
 - two wires of same cross-section: up to max. 6 mm²
- Maximum connection cross-section of input and output terminal: 35 mm²**
- Connection / installation of Linocur® with wiring bars / Insulated bus bars in pin design**

SELF-SUPPLIED MONITORING DEVICE

Available with all Linocur types.

The device is mounted on the right using clips

and is connected in parallel to the Linocur.

The relay output contact closes if (depending on type):

- type 1: the Linocur switch is manually deactivated
- type 2: at least one fuse in the device operates
- type 3: the Linocur switch is manually deactivated, or at least one fuse in the device operates



Linocur® D02 230VAC to 400VAC, 65VDC, with fuse-links and fixed gauge pieces



Linocur D02 220VDC (four poles connected in series)



Linocur® D02 250VAC to 440 VAC suitable for marine application (1P to 3P+N versions)



Linocur® 05860.100000 Fuse monitoring module