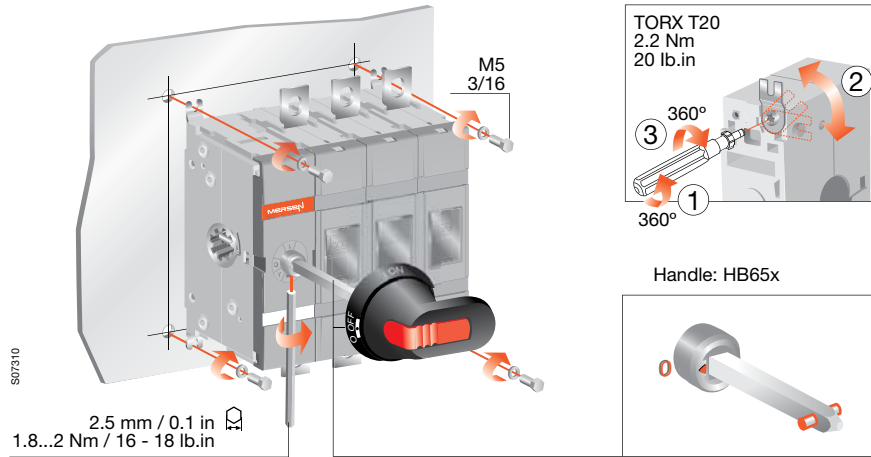


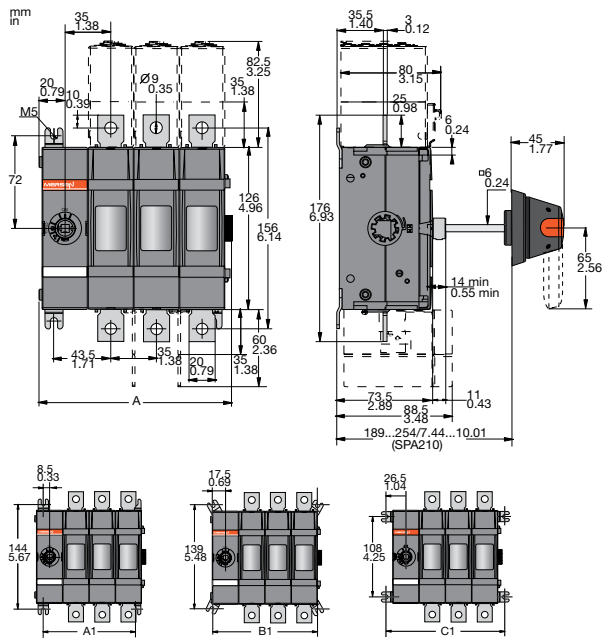
# MD100-250x Non-Fused

Document no. 34MD100-250NF-A

## MD100-250Ex/MD100-200Ux



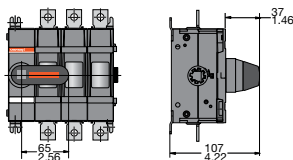
## MD100-250E/MD100-200U, 03 or 30 configuration



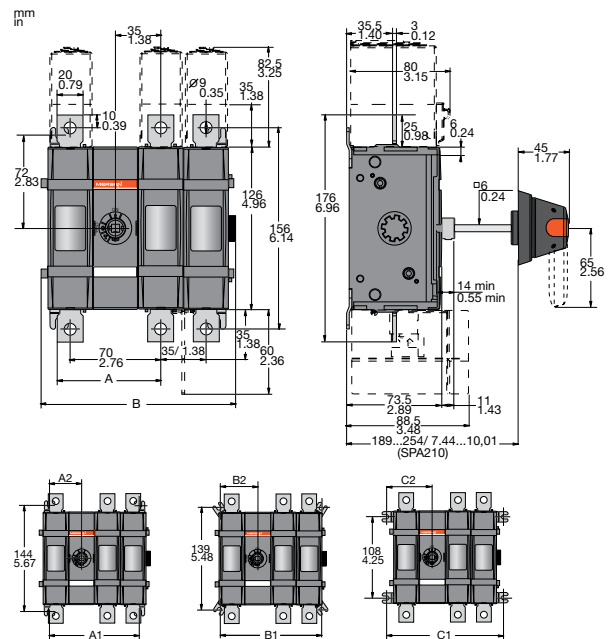
MD100-250E/MD100-200U,  
03 or 30 configuration

[mm/in]	01	02	03	04
A	78/3.07	113/4.45	148/5.83	183/7.21
A1	52/2.05	87/3.43	122/4.81	157/6.18
B1	70/2.76	105/4.14	140/5.51	175/6.89
C1	88/3.46	123/4.85	158/6.22	193/7.6

With handle



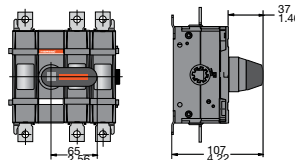
## MD100-250/MD100-200U, 11 or 22 configuration



MD100-250E/MD100-200U,  
11 or 22 configuration

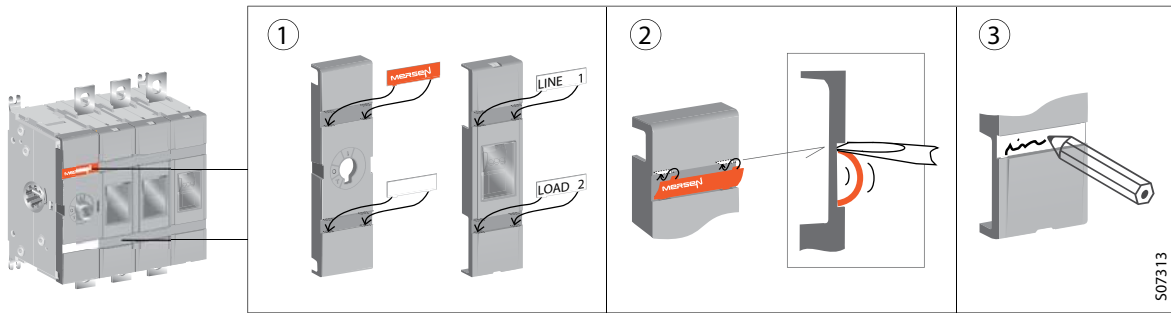
[mm/in]	11	12	13	22
A	80/3.15	80/3.15	80/3.15	115/4.53
B	115.5/4.55	150.5/5.93	185.5/7.31	185.5/7.31
A1	87/3.43	122/4.81	157/6.18	157/6.18
A2	43.5/1.71	43.5/1.71	43.5/1.71	78.5/3.09
B1	105/4.14	140/5.51	175/6.89	175/6.89
B2	52.5/2.07	52.5/2.07	52.5/2.07	87.5/3.44
C1	123/4.85	158/6.22	193/7.6	193/7.6
C2	61.5	61.5	61.5	96.5

With handle

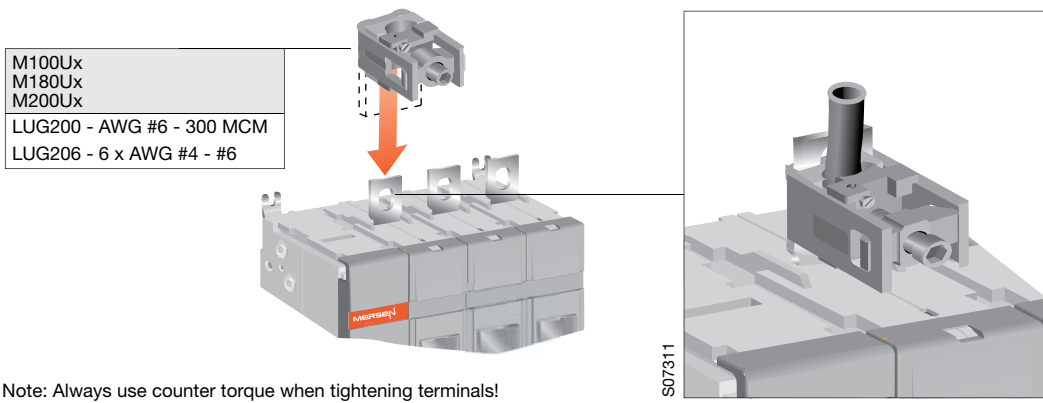


# MD100-250x Non-Fused

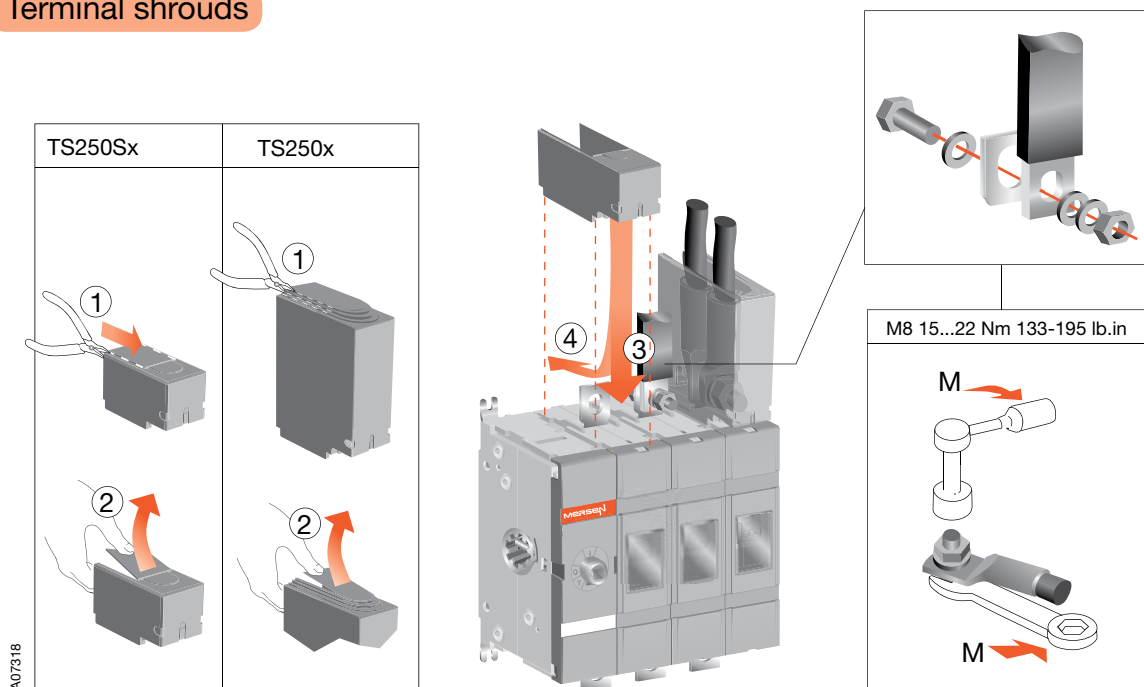
## Label



## Lugs



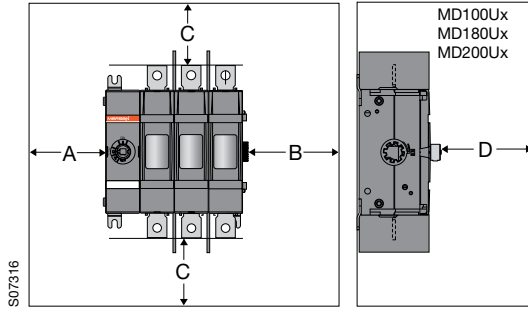
## Terminal shrouds



# MD100-250x Non-Fused

## Clearances per UL98

Minimum distances to enclosure walls



Minimum enclosure size or equivalent volume

Height	Width	Depth
300 mm 12 in	x 350 mm x 14 in	x 200 mm x 8 in

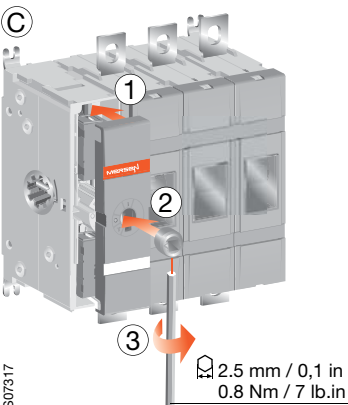
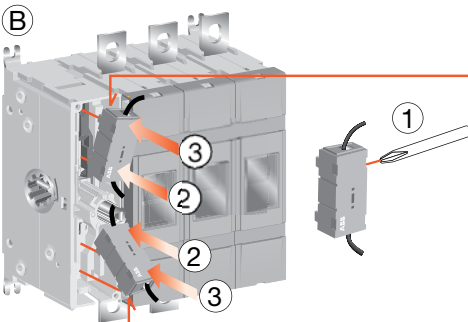
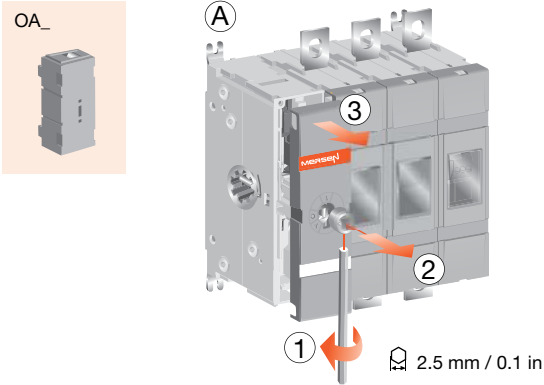
A	B	D
0	13 mm 0.5 in	13 mm 0.5 in

C Cable size	
AWG	
4-3	100 mm 4 in
2	100 mm 4 in
1	100 mm 4 in
1/0	125 mm 5 in
2/0	150 mm 6 in
3/0-4/0	175 mm 7 in
MCM	
250	200 mm 8 in
300	250 mm 10 in

S07316

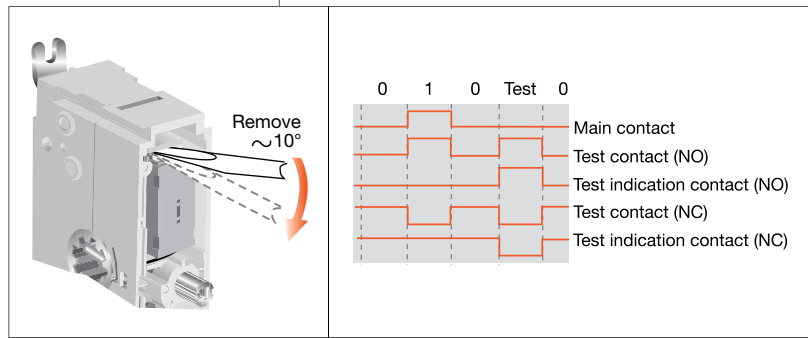
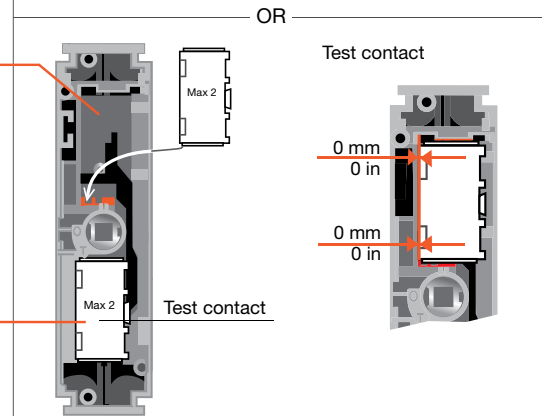
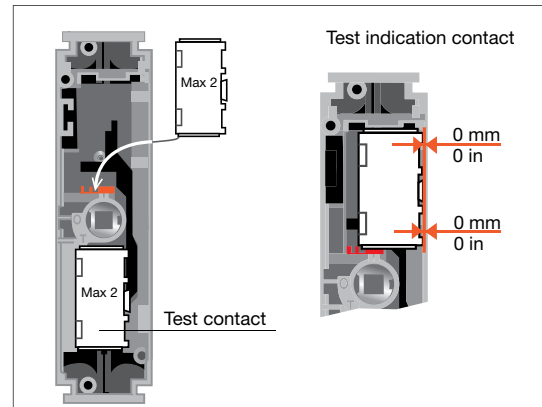
## Internally-mounted Auxiliary contacts

OA\_



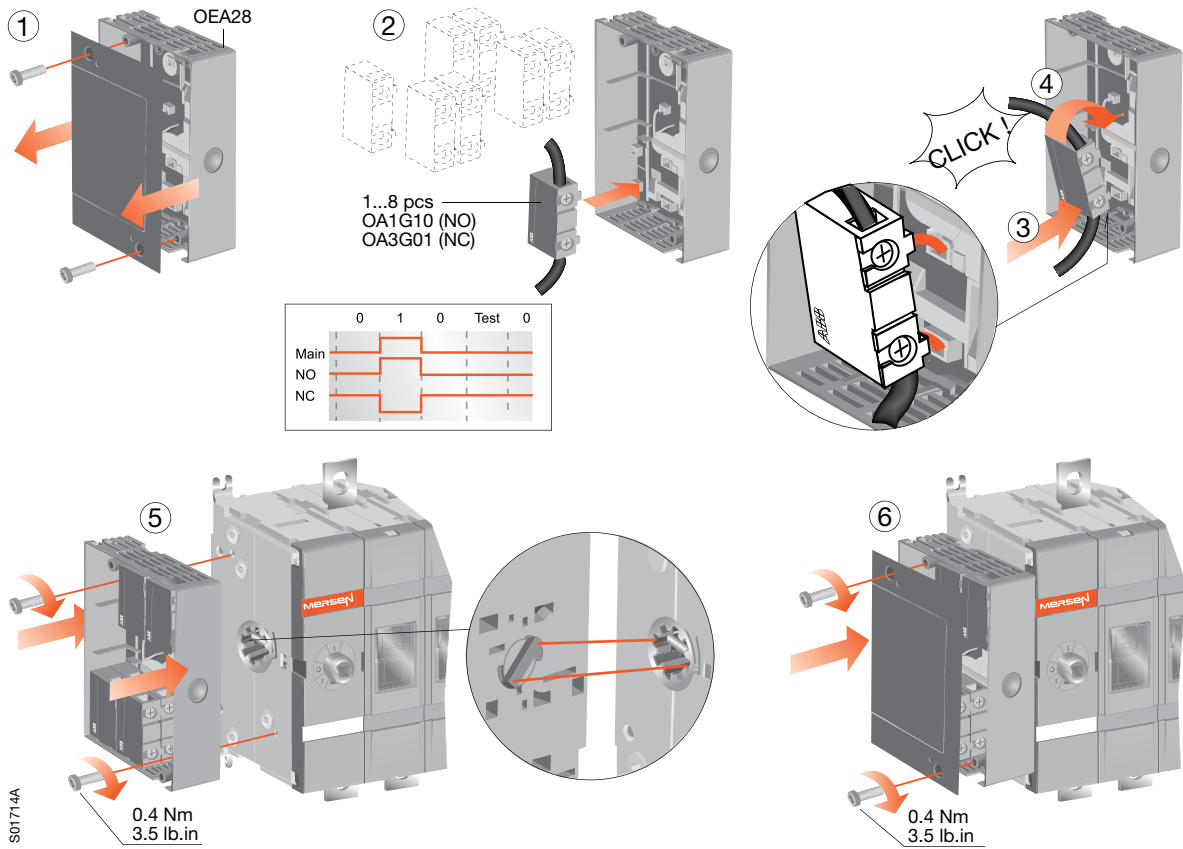
S07317

NO: OA1G10  
NC: OA3G01

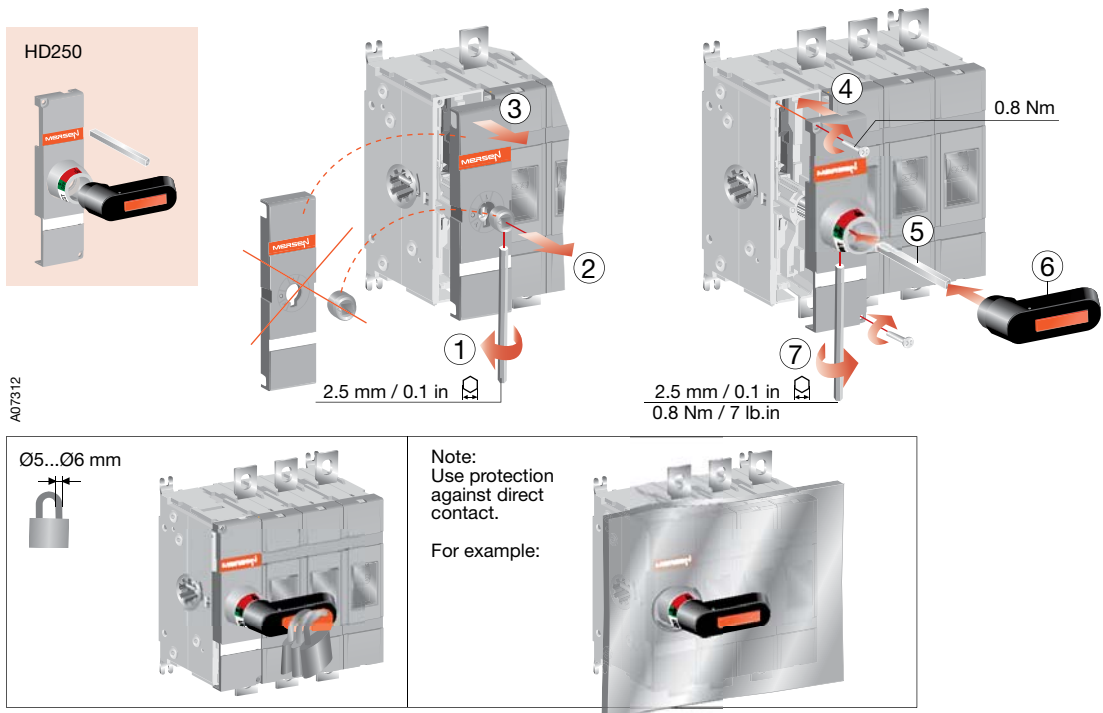


# MD100-250x Non-Fused

## Externally-mounted Auxiliary contacts



## Handle direct



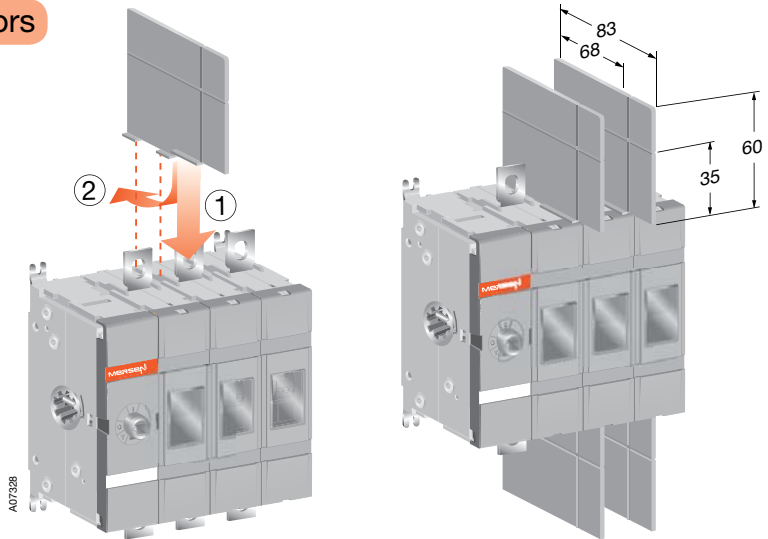
# MD100-250x Non-Fused

## Barriers, phase separators

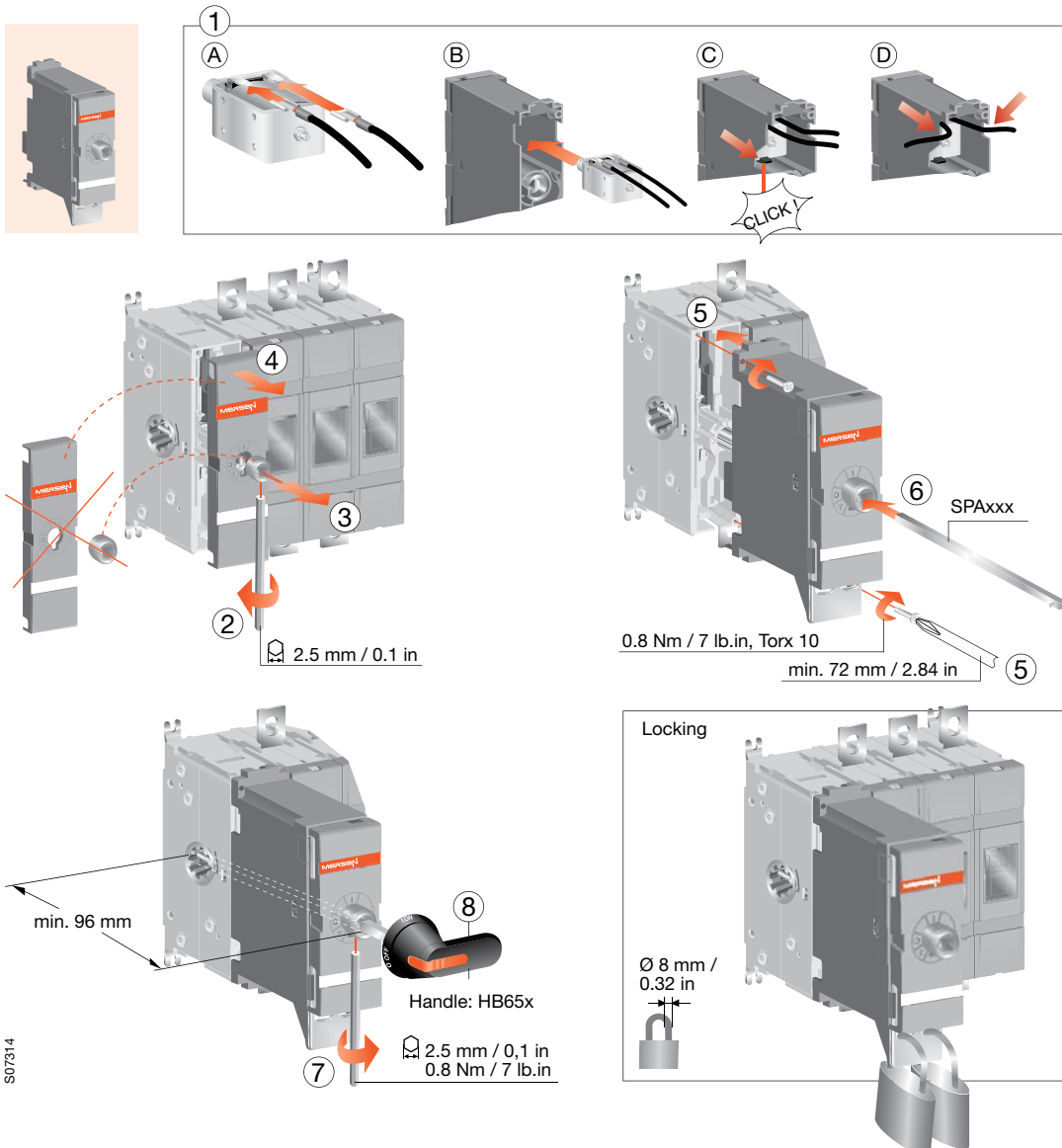
Barriers 69445 or shrouds must be used on MD100Ux, MD180Ux and MD200Ux to maintain 1" clearance.

Barriers must also be used on all MD100-250Ex types if clearance between poles is less than 14 mm.

Type for package of 6 barriers is PSD250.



## LON160 LOFF160 Locking mechanisms for MD100x-250x non-fuses



# MD100-250x Non-Fused

## Jumper bar and Jumper cover

