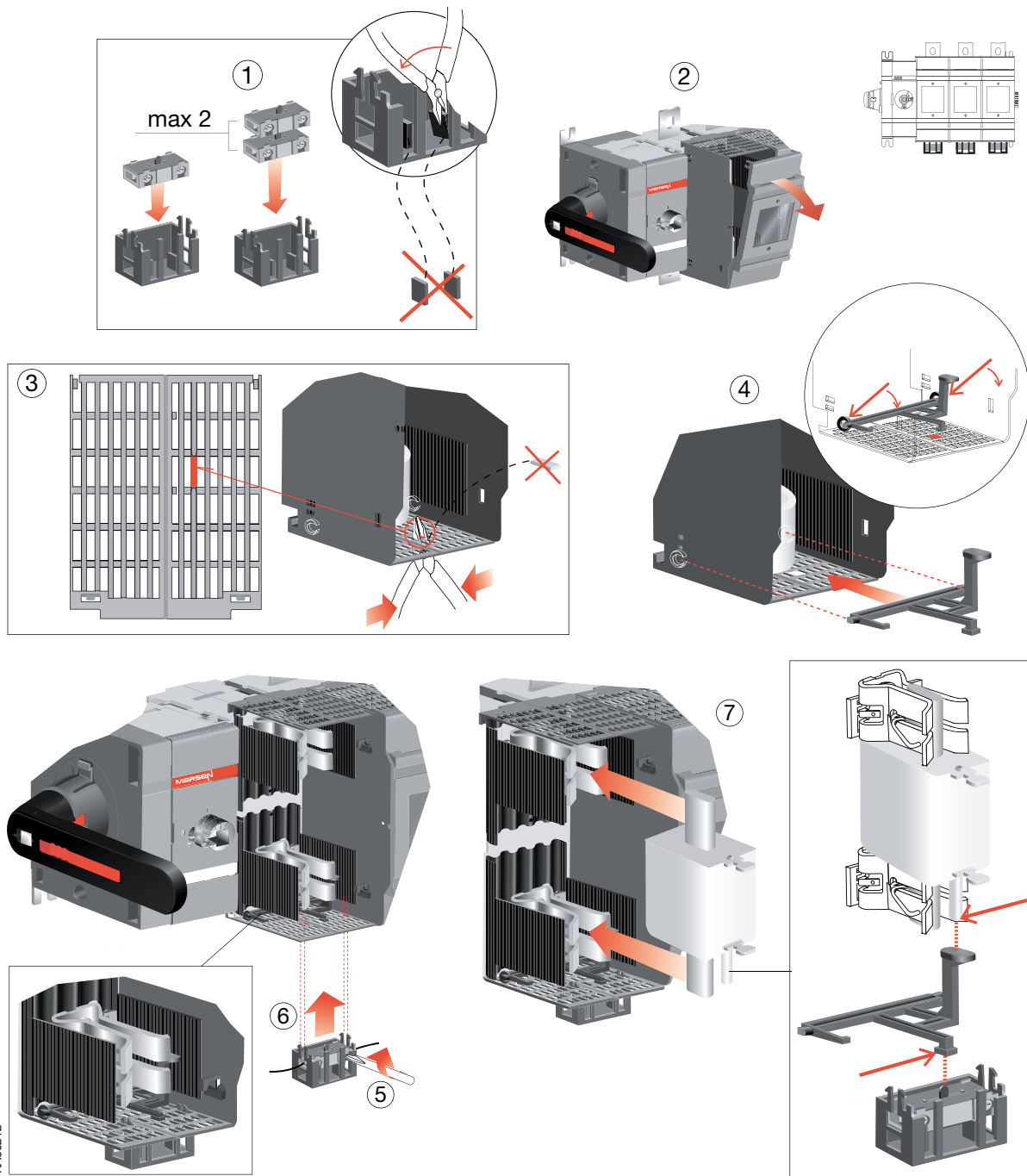
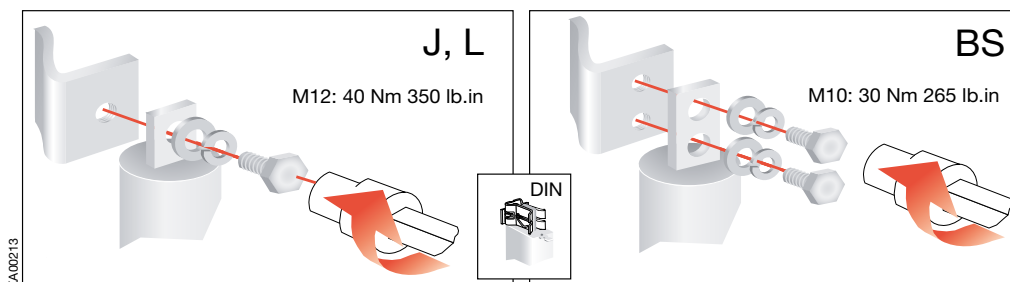


M600-800xS Fused

Blown Fuse Indicators



Fuse links



M600-800xS Fused

Fuse Monitor

Note: Can be used only for switches having the gearbox on the right side.

OFMZ 2
2.8 x 0,8
0.11 x 0,03

0,4 Nm
3.5 lb.in

1x1.5 mm²
0.4 Nm
1x15 AWG
3.5 lb.in

KA00214

7a For DIN-style

7b

8

Internally-mounted Auxiliary contacts

1 OEA28

2

1...8 pcs
OA1G10 (NO)
OA3G01 (NC)

CLICK!

3

4

Note: Can be used only for switches having the gearbox on the right side.

	0	1	0	Test	0
Main	[Circuit]		[Circuit]		
NO	[Circuit]		[Circuit]		
NC	[Circuit]		[Circuit]		

5

0.4 Nm
3.5 lb.in

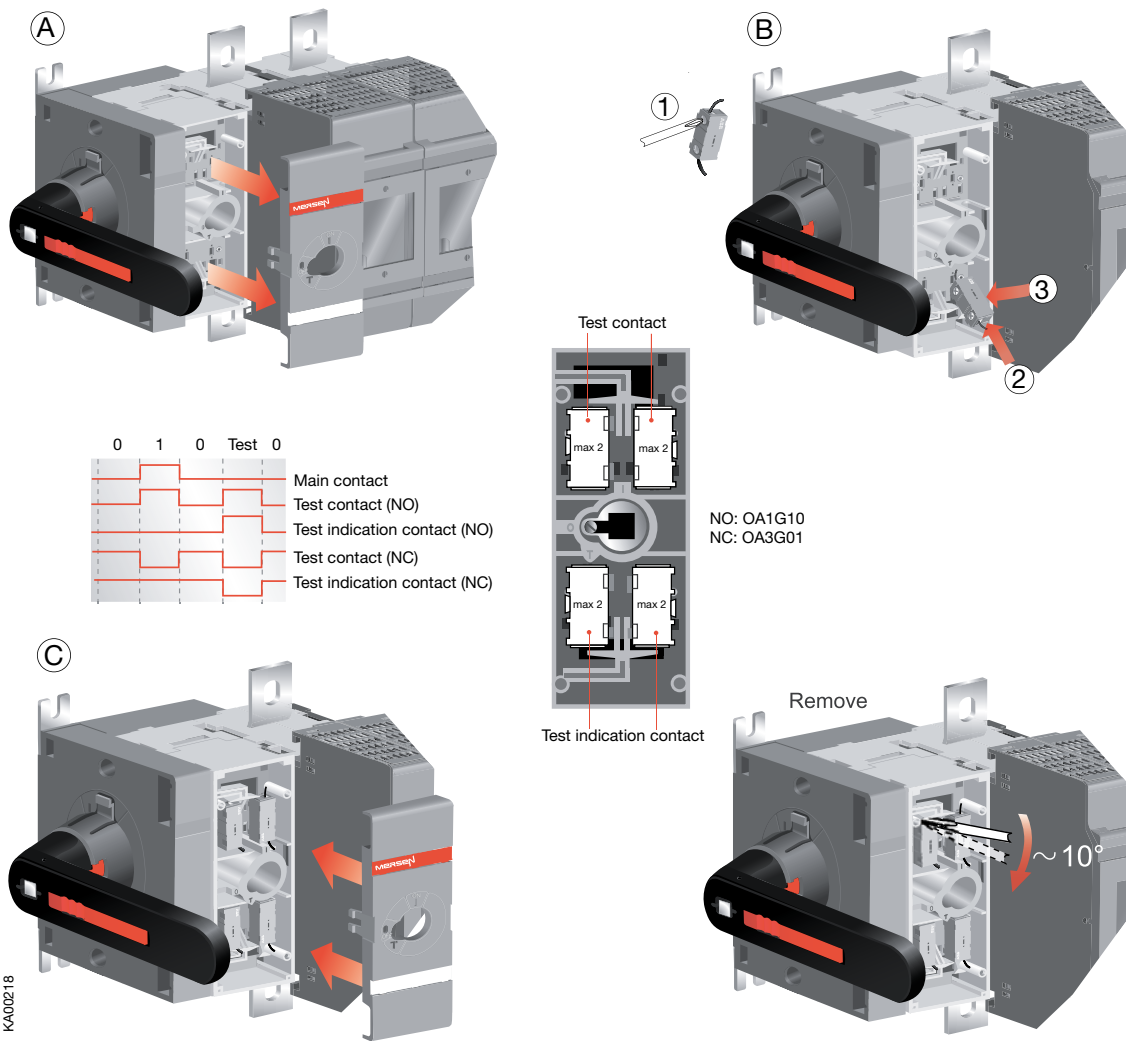
6

0.4 Nm
3.5 lb.in

KA00217

M600-800xS Fused

Internally-mounted Auxiliary contacts



Neutral Links

