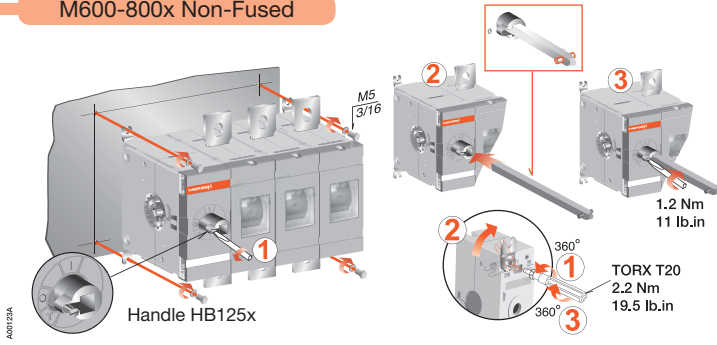
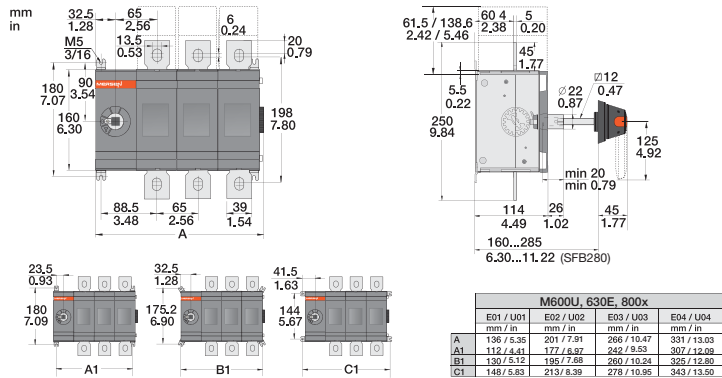


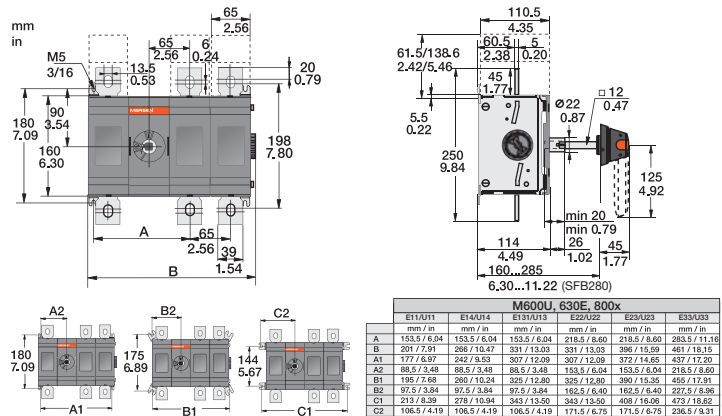
M600-800x Non-Fused



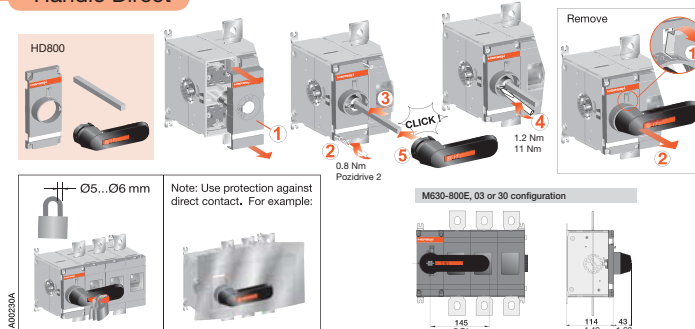
M600x - 800x 03 or 30 configuration



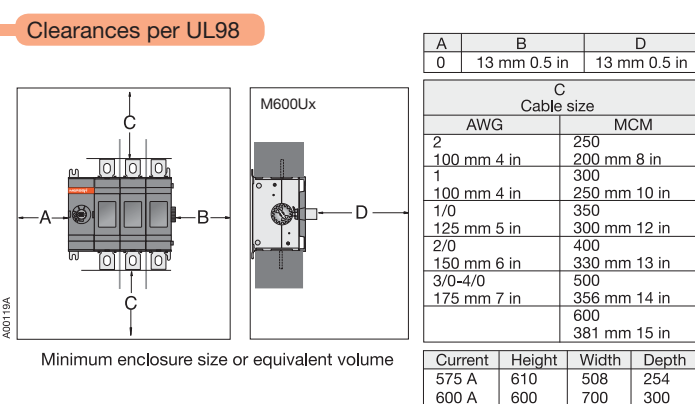
M600x - 800x 11 to 22 configurations



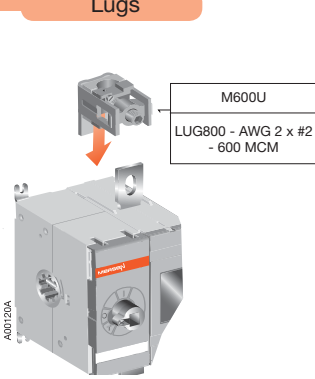
Handle Direct



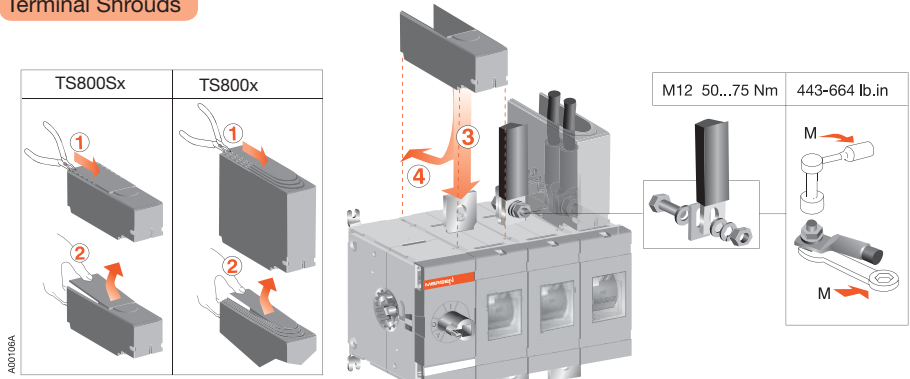
M630-800E, 03 or 30 configuration



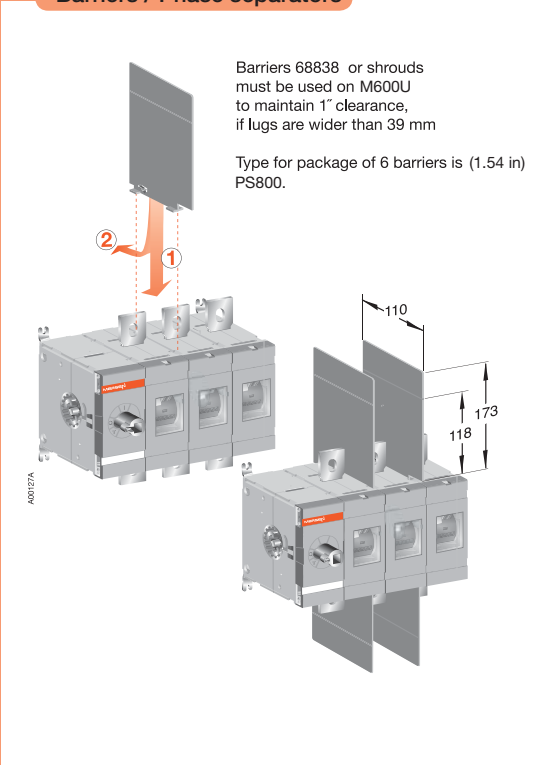
Lugs



Terminal Shrouds



Barriers / Phase separators



Clearances per UL98

A	B	D
0	13 mm 0.5 in	13 mm 0.5 in

C	
AWG	MCM
2	250
100 mm 4 in	200 mm 8 in
1	300
100 mm 4 in	250 mm 10 in
1/0	350
125 mm 5 in	300 mm 12 in
2/0	400
150 mm 6 in	330 mm 13 in
3/0-4/0	500
175 mm 7 in	356 mm 14 in
	600
	381 mm 15 in

Current	Height	Width	Depth
575 A	610	508	254
600 A	600	700	300

M600-800x Non-Fused

Internally mounted Auxiliary contacts

NO: OA1G10
NC: OA3G01

Test contact

Max 2

Max 2

Max 2

Max 2

A00124A

Test indication contact

0 1 0 Test 0

Main contact

Test contact (NO)

Test indication contact (NO)

Test contact (NC)

Test indication contact (NC)

Remove ~10°

D

4Px400 Fourth pole

1 Nm
9 lb.in

1 Nm
9 lb.in

1 Nm
9 lb.in

A00107A

Label

A00125A

1

2

LON800S LOFF800S Locking mechanism

1

A

B

C

D

CLICK

2

A

B

Locking

4 Nm 35 lb.in
Torx 20

A

1.2 Nm
11 lb.in

NOTE:
min. 94 mm
3.7 in

B

HB125x

C

SFBxxx

08 mm 0.32 in

A00107

Externally mounted Auxiliary contacts

1

2

1...8 pcs
OA1G10 (NO)
OA3G01 (NC)

CLICK!

3

4

5

0.4 Nm

6

0.4 Nm

A00126A

OEA 28

0 1 0 Test 0

Main

NO

NC