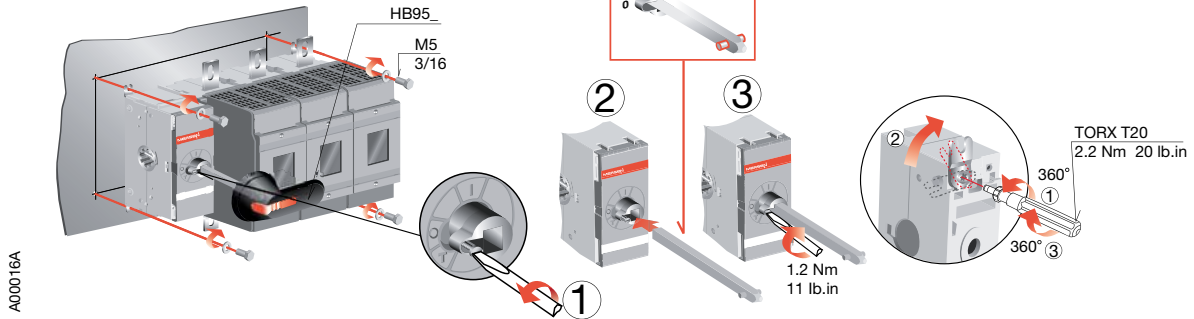


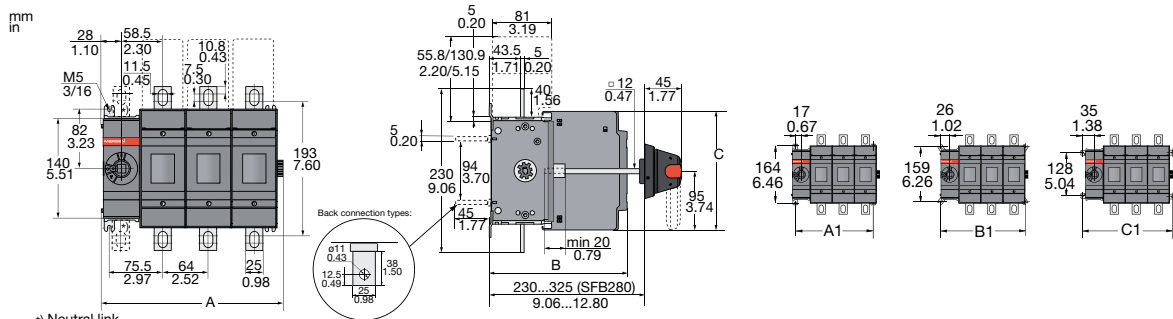
# M315-400x Fused

Document no. 34M315-400F-A

## M315-400x Fused



For DIN, BS and J fuse types, 0-3 and 3-0 configurations

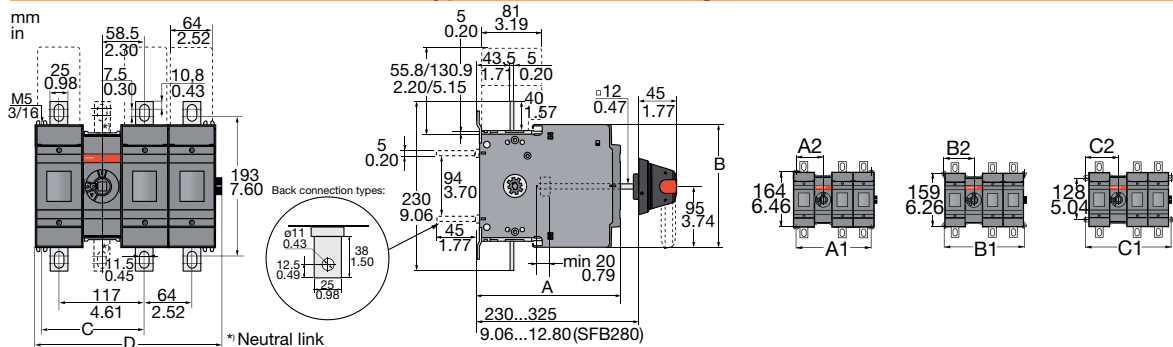


\*) Neutral link

	M315B30 - M400B30				M400D30 - M400J30							
	B01	B02	B03	B04	D01	D02	D03	D04	J01	J02	J03	J04
	mm	mm	mm	mm	mm	mm	mm	mm	mm/in	mm/in	mm/in	mm/in
A	127	191	255	319	127	191	255	319	127/5.00	191/7.52	255/10.04	319/12.56
B	176	176	176	176	193	193	193	193	176/6.93	176/6.93	176/6.93	176/6.93
C	194	194	194	194	166	166	166	166	194/7.64	194/7.64	194/7.64	194/7.64

	M315x				M400x			
	B01	B02	B03	B04	B01/D01/J01	B02/D02/J02	B03/D03/J03	B04/D04/J04
	mm	mm	mm	mm	mm/in	mm/in	mm/in	mm/in
A1	98.5	162.5	226.5	290.5	98.5/3.88	162.5/6.40	226.5/8.92	290.5/11.44
B1	116.5	180.5	244.5	308.5	116.5/4.59	180.5/7.11	244.5/9.63	308.5/12.15
C1	134.5	198.5	262.5	326.5	134.5/5.30	198.5/7.81	262.5/10.33	326.5/12.85

For DIN, BS and J fuse types, 1-1 to 2-2 configurations



\*) Neutral link

	M315B30 - M400B30								M400D30 - M400J30							
	B11	B12	B13	B21	B22	D11	D12	D13	D21	D22	J11	J12	J13	J21	J22	
	mm	mm	mm	mm	mm	mm	mm	mm	mm	mm	mm/in	mm/in	mm/in	mm/in	mm/in	
A	176	176	176	176	176	193	193	193	193	193	176 / 6.93	176 / 6.93	176 / 6.93	176 / 6.93	176 / 6.93	
B	194	194	194	194	194	166	166	166	166	166	194 / 7.64	194 / 7.64	194 / 7.64	194 / 7.64	194 / 7.64	
C	140	140	140	204	204	140	140	140	204	204	140 / 5.51	140 / 5.51	140 / 5.51	204 / 8.03	204 / 8.03	
D	190	254	318	254	318	190	254	318	254	318	190 / 7.48	254 / 10.00	318 / 12.52	254 / 10.00	318 / 12.52	

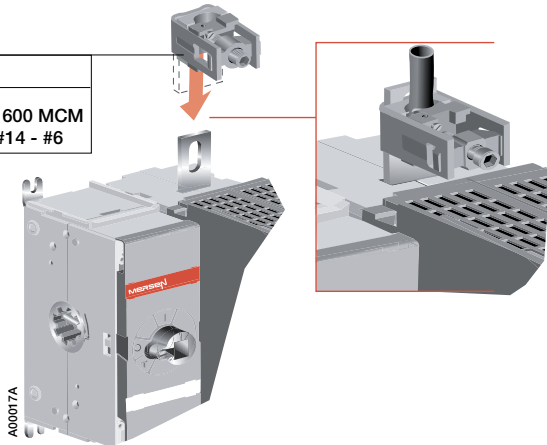
	M315x					M400x				
	B11	B12	B21	B22	B13	B11/D11/J11	B12/D12/J12	B21/D21/J21	B22/D22/J22	B13/D13/J13
	mm	mm	mm	mm	mm	mm/in	mm/in	mm/in	mm/in	mm/in
A1	163	227	227	291	291	163/6.42	227/8.94	227/8.94	291/11.46	291/11.46
A2	81.5	81.5	145.5	145.5	81.5	81.5/3.21	81.5/3.21	145.5/5.73	145.5/5.73	81.5/3.21
B1	181	245	245	309	309	181/7.13	245/9.65	245/9.65	309/12.17	309/12.17
B2	90.5	90.5	154.5	154.5	90.5	90.5/3.56	90.5/3.56	154.5/6.08	154.5/6.08	90.5/3.56
C1	199	263	263	327	327	199/7.83	263/10.35	263/10.35	327/12.87	327/12.87
C2	99.5	99.5	163.5	163.5	99.5	99.5/3.92	99.5/3.92	163.5/6.44	163.5/6.44	99.5/3.92

# M315-400x Fused

## Lugs

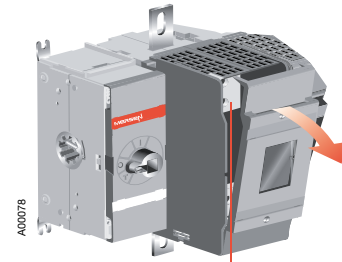
M400Jxx

LUG400 - AWG #2 - 600 MCM  
LUG406 - 6 x AWG #14 - #6

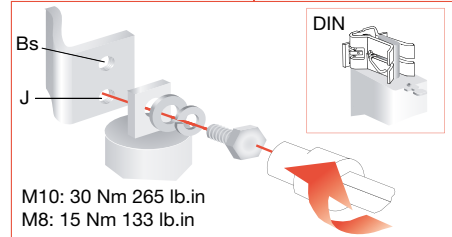


A00017A

## Fuse links

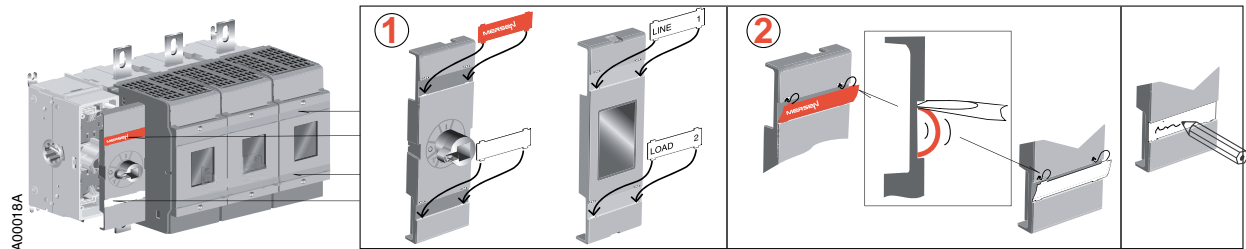


A00078



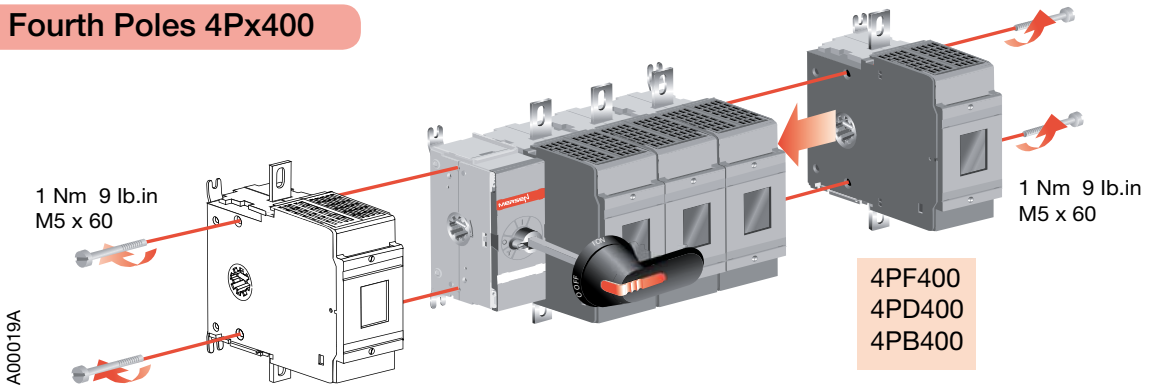
M10: 30 Nm 265 lb.in  
M8: 15 Nm 133 lb.in

## Label



A00018A

## Fourth Poles 4Px400

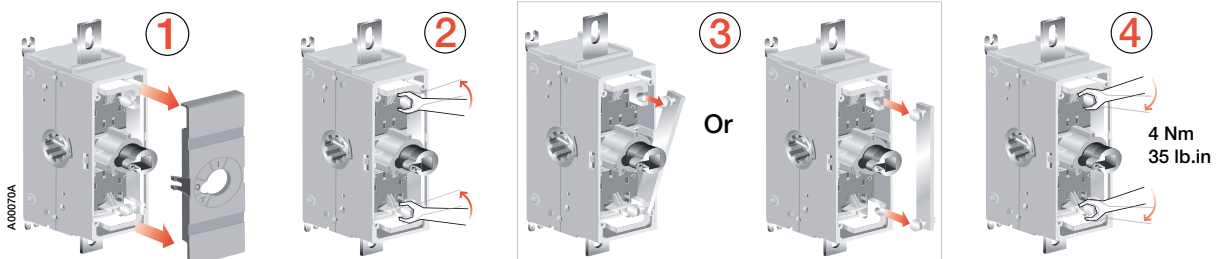


1 Nm 9 lb.in  
M5 x 60

1 Nm 9 lb.in  
M5 x 60

4PF400  
4PD400  
4PB400

## Neutral Links

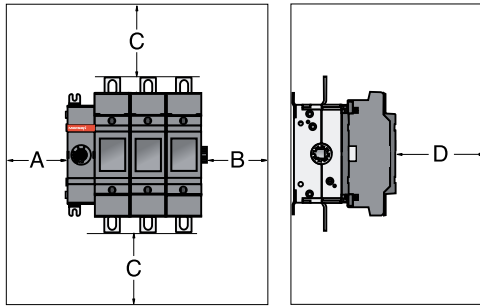


A00070A

4 Nm  
35 lb.in

# M315-400x Fused

## Clearances per UL98



A	B	D
0	13 mm 0.5 in	13 mm 0.5 in

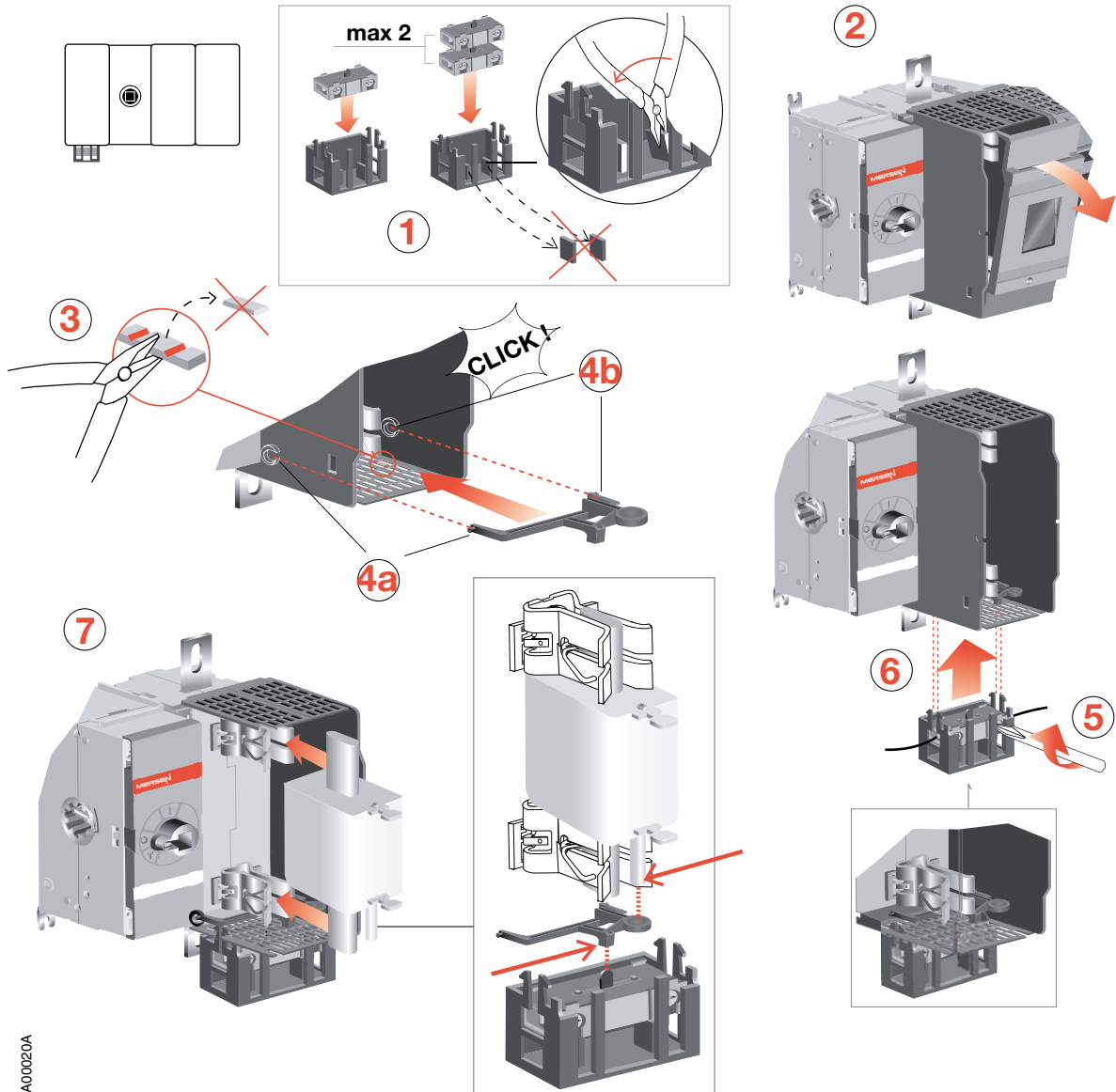
C	
Cable size AWG/MCM	
4-3	250
100 mm 4 in	200 mm 8 in
2	300
100 mm 4 in	250 mm 10 in
1	400
100 mm 4 in	330 mm 13 in
1/0	500
125 mm 5 in	356 mm 14 in
2/0	600
150 mm 6 in	381 mm 15 in
3/0 - 4/0	
175 mm 7 in	

Minimum enclosure size or equivalent volume

Switch	Height	Width	Depth
3-pole	610	356	254
4-pole	610	508	254

A00104A

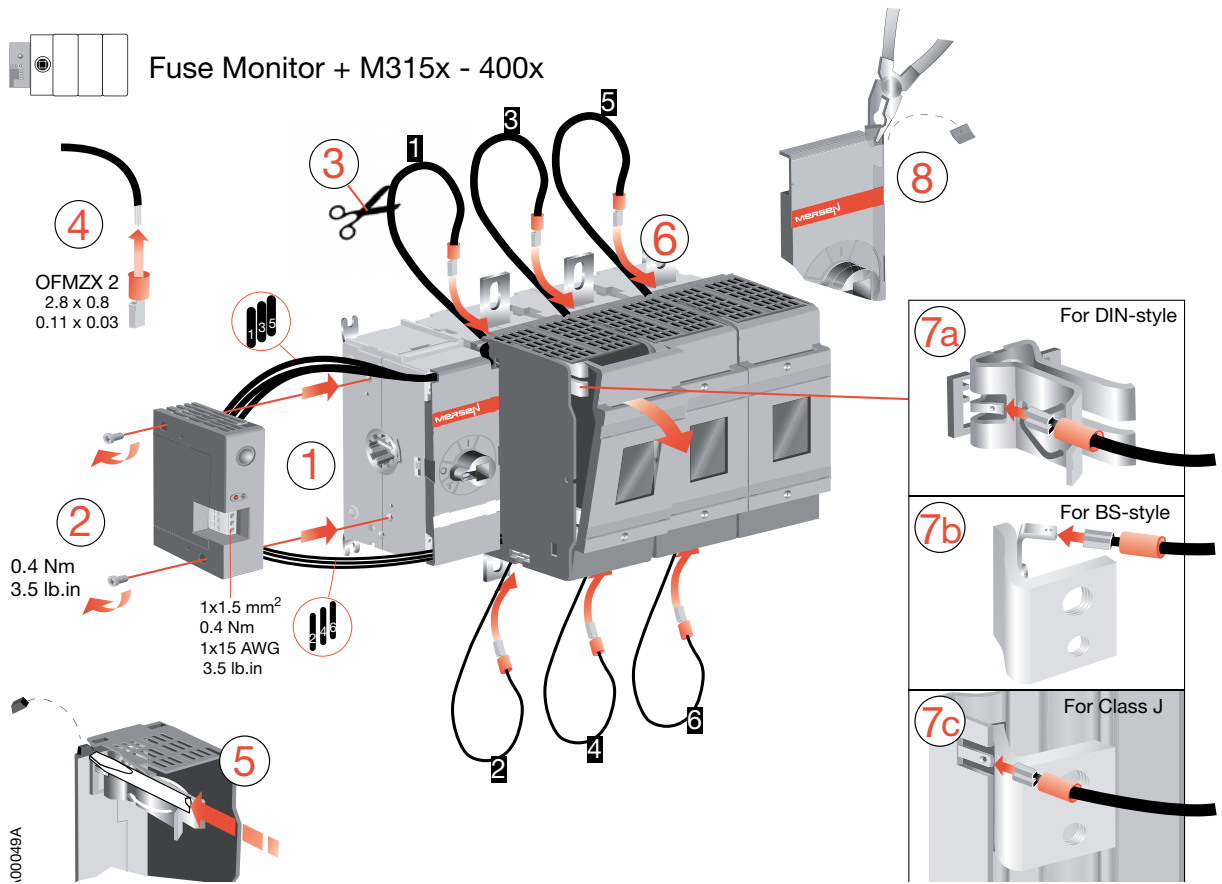
## Blown Fuse Indicators



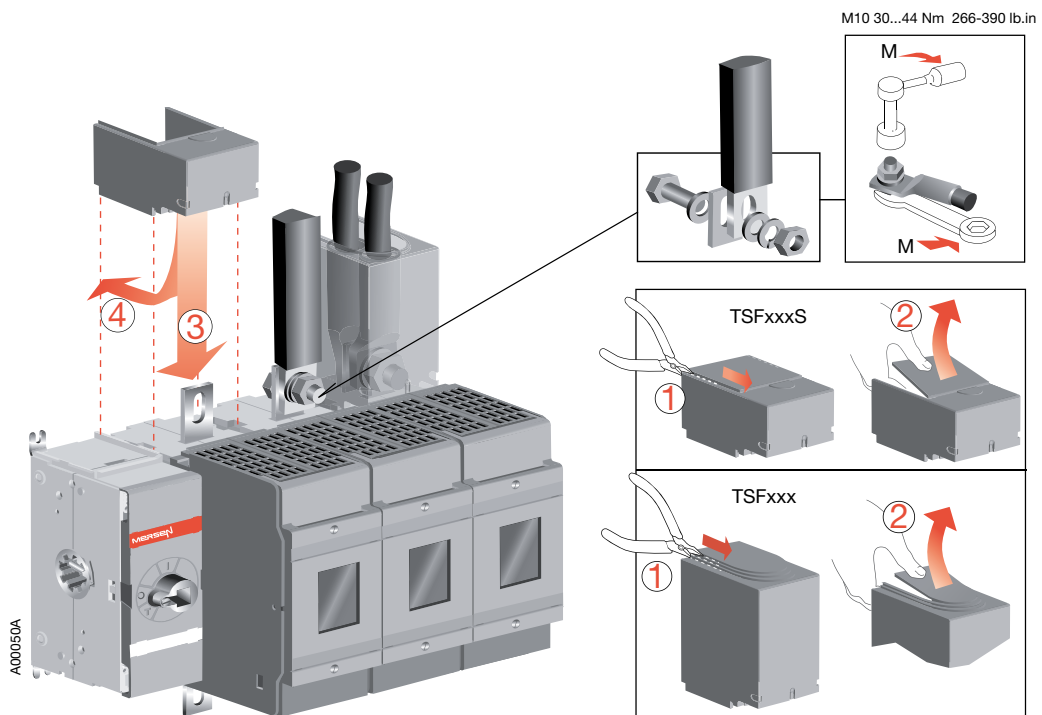
A00020A

# M315-400x Fused

## Fuse Monitor



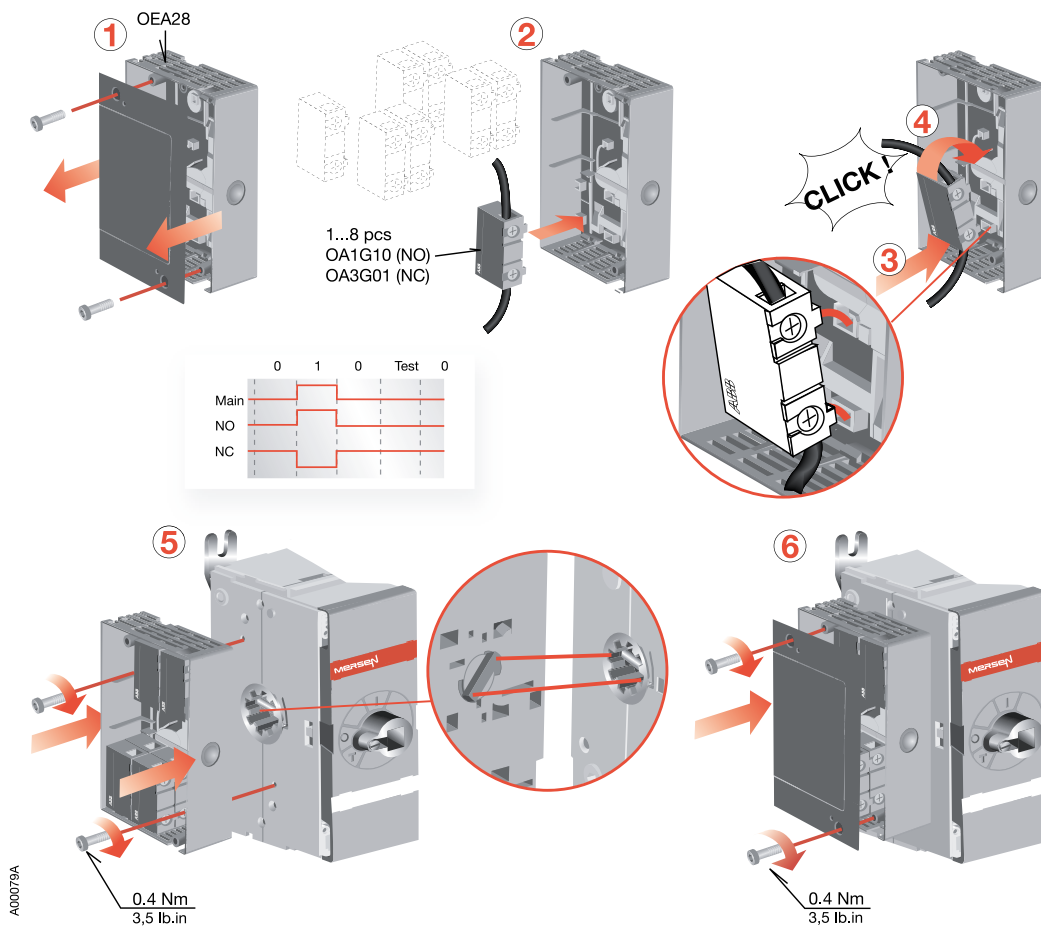
## TSFxxx Terminal Shrouds



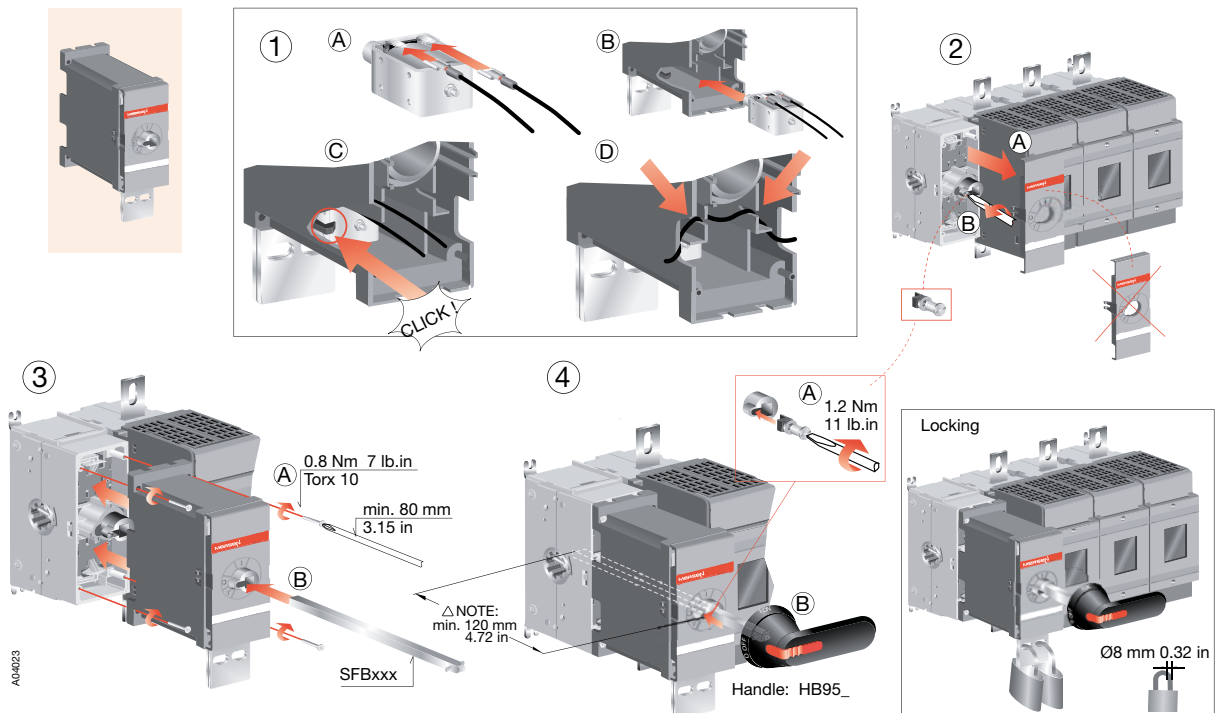


# M315-400x Fused

## Externally-mounted Auxiliary contacts



## LOFF400, LON400 Locking Mechanism

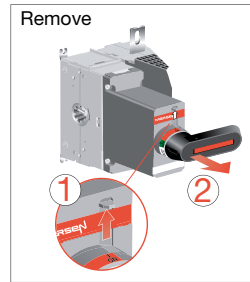
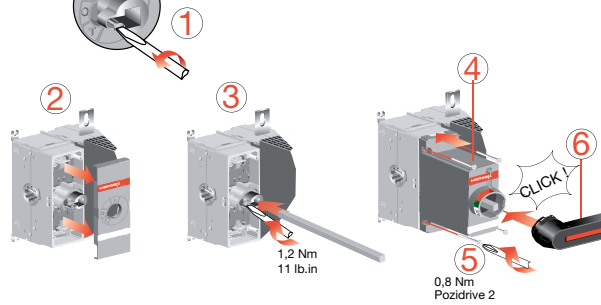
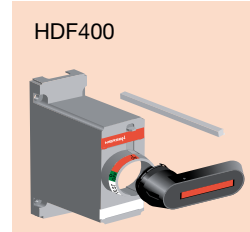
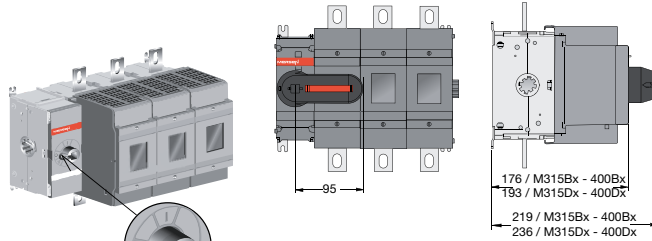
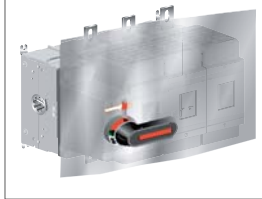


# M315-400x Fused

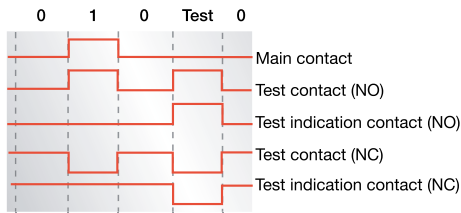
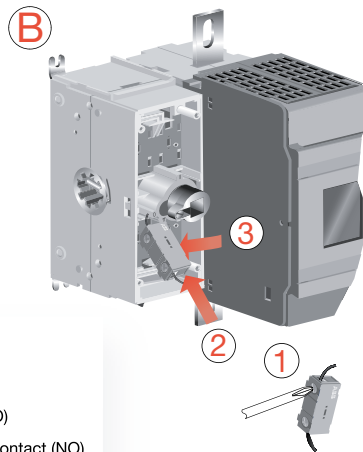
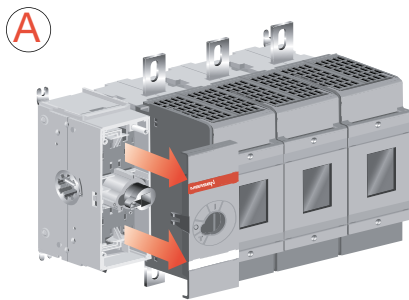
## HDF400 Direct-mount handles



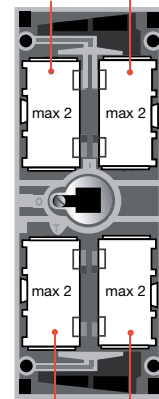
Note: Use protection against direct contact. For example:



## Internally-mounted Auxiliary contacts



NO: OA1G10  
NC: OA3G01  
Test contact



Test indication contact

