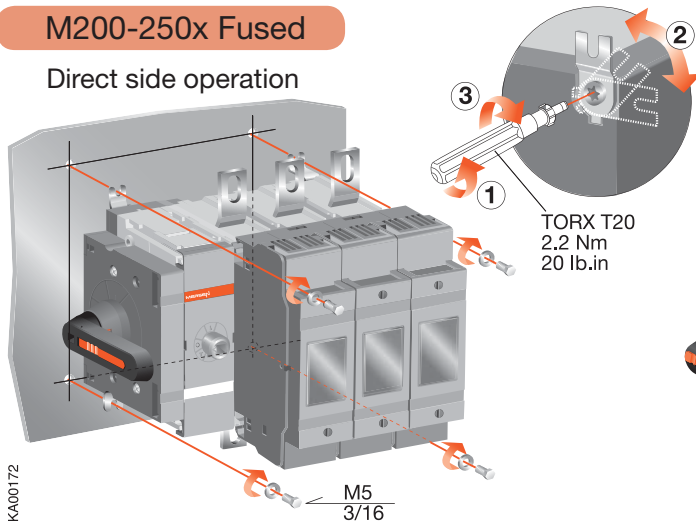


M200-250xS Fused

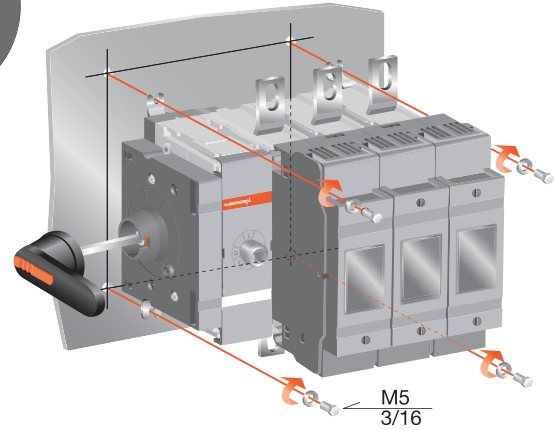
Document no. 34M200-250SF-A

M200-250x Fused

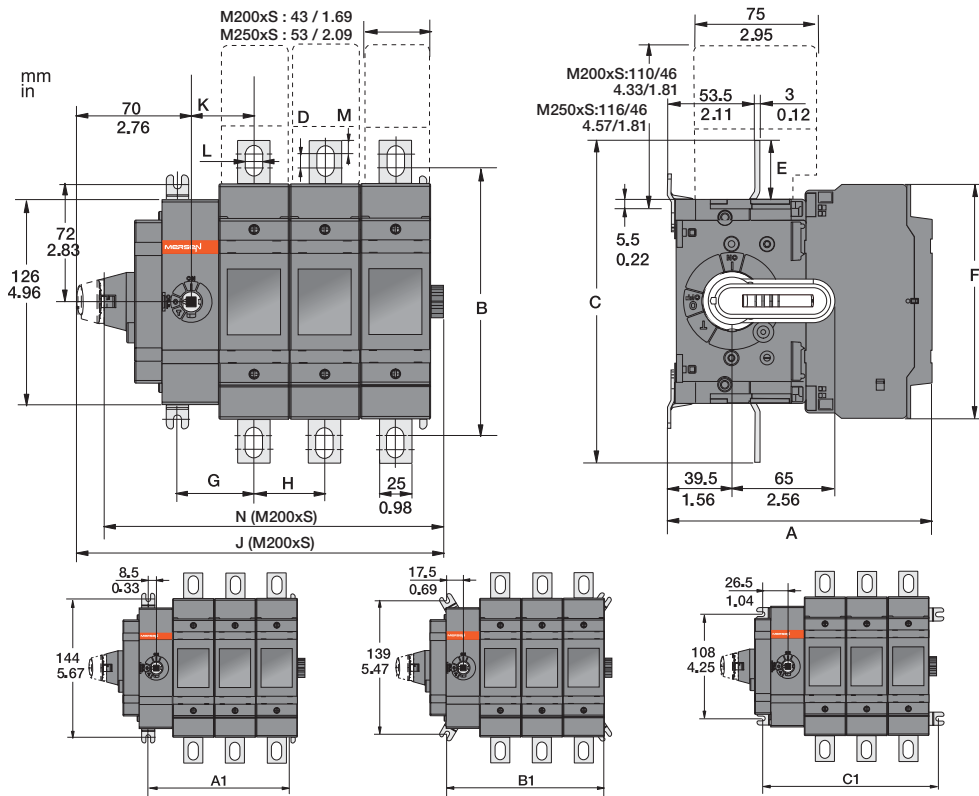
Direct side operation



External side operation



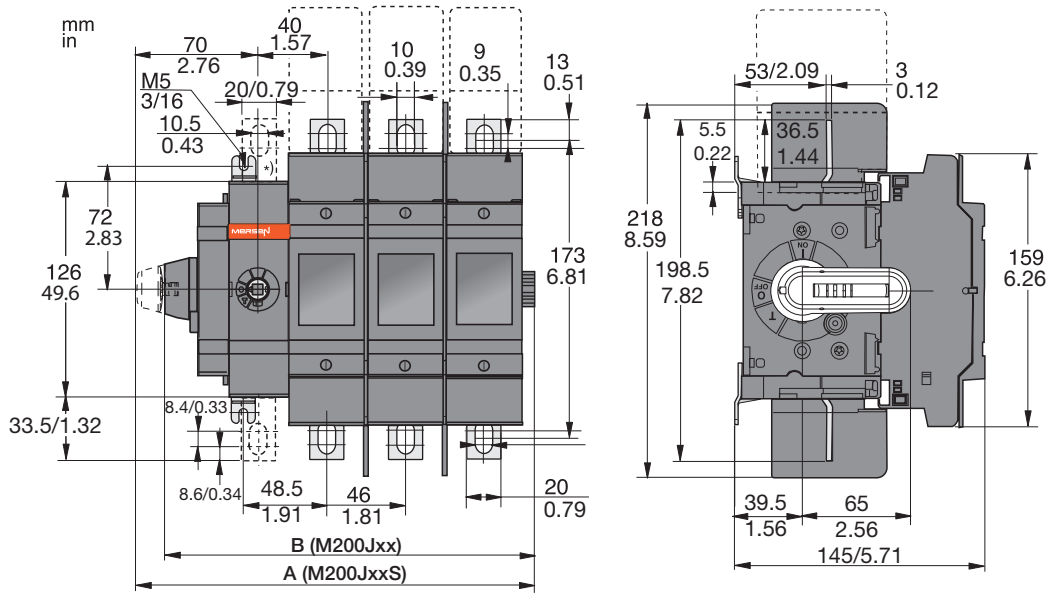
KA00172



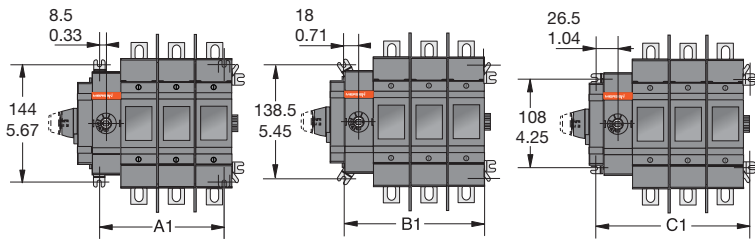
	M200xS								M250xS													
	DS01	BS01	DS02	BS02	DS03	BS03	DS04	BS04	DS01	DS02	DS03	DS04	DS01	DS02	DS03	DS04						
A	149.0	5.87	130.0	5.12	149.0	5.87	130.0	5.12	149.0	5.87	130.0	5.12	149.0	5.87	154.0	6.06	154.0	6.06	154.0	6.06	154.0	6.06
B	164.5	6.48	164.5	6.48	164.5	6.48	164.5	6.48	164.5	6.48	164.5	6.48	164.5	6.48	162.0	6.38	162.0	6.38	162.0	6.38	162.0	6.38
C	198.5	7.81	198.5	7.81	198.5	7.81	198.5	7.81	198.5	7.81	198.5	7.81	198.5	7.81	193.0	7.60	193.0	7.60	193.0	7.60	193.0	7.60
D	8.5	0.33	8.5	0.33	8.5	0.33	8.5	0.33	8.5	0.33	8.5	0.33	8.5	0.33	4.0	0.16	4.0	0.16	4.0	0.16	4.0	0.16
E	36.5	1.44	36.5	1.44	36.5	1.44	36.5	1.44	36.5	1.44	36.5	1.44	36.5	1.44	33.5	1.32	33.5	1.32	33.5	1.32	33.5	1.32
F	144.5	5.69	144.5	5.69	144.5	5.69	144.5	5.69	144.5	5.69	144.5	5.69	144.5	5.69	148.5	5.85	148.5	5.85	148.5	5.85	148.5	5.85
G	48.5	1.91	48.5	1.91	48.5	1.91	48.5	1.91	48.5	1.91	48.5	1.91	48.5	1.91	53.5	2.11	53.5	2.11	53.5	2.11	53.5	2.11
H	-	-	-	-	43.5	1.71	43.5	1.71	43.5	1.71	43.5	1.71	43.5	1.71	-	-	54.0	2.13	54.0	2.13	54.0	2.13
I	20.0	0.79	20.0	0.79	20.0	0.79	20.0	0.79	20.0	0.79	20.0	0.79	20.0	0.79	25.0	0.98	25.0	0.98	25.0	0.98	25.0	0.98
J	138.5	5.45	138.5	5.45	182.0	7.17	182.0	7.17	225.5	8.88	225.5	8.88	269.0	10.59	148.5	5.85	202.5	7.97	256.5	10.10	310.5	12.22
K	40.0	1.57	40.0	1.57	40.0	1.57	40.0	1.57	40.0	1.57	40.0	1.57	40.0	1.57	45.0	1.77	45.0	1.77	45.0	1.77	45.0	1.77
L	10.0	0.39	10.0	0.39	10.0	0.39	10.0	0.39	10.0	0.39	10.0	0.39	10.0	0.39	11.0	0.43	11.0	0.43	11.0	0.43	11.0	0.43
M	8.5	0.33	8.5	0.33	8.5	0.33	8.5	0.33	8.5	0.33	8.5	0.33	8.5	0.33	11.5	0.45	11.5	0.45	11.5	0.45	11.5	0.45
N	121.5	4.78	121.5	4.78	165.0	6.50	165.0	6.50	208.5	8.21	208.5	8.21	252.0	9.92	131.5	5.18	186.0	7.32	240.0	9.45	294.0	11.57
A1	60.5	2.38	60.5	2.38	104.0	4.09	104.0	4.09	147.5	5.81	147.5	5.81	191.0	7.52	70.5	2.78	124.5	4.90	178.5	7.03	232.5	9.15
B1	79.5	3.13	79.5	3.13	123.0	4.84	123.0	4.84	166.5	6.56	166.5	6.56	210.0	8.27	210.0	8.27	89.5	3.52	143.5	5.65	197.5	7.78
C1	96.5	3.80	96.5	3.80	140.0	5.51	140.0	5.51	183.5	7.22	183.5	7.22	227.0	8.94	227.0	8.94	106.5	4.19	214.5	8.44	268.5	10.57

M200-250xS Fused

M200JxxS



*) Neutral link



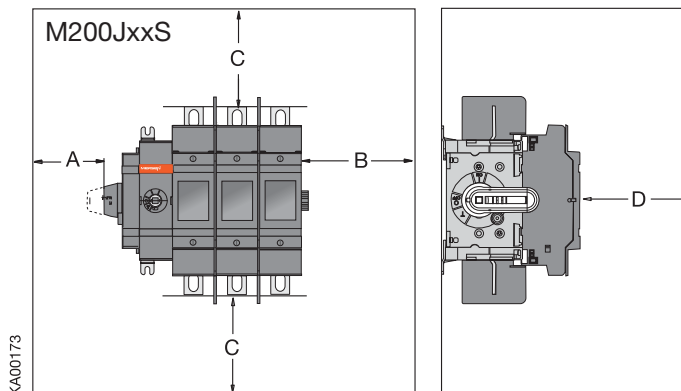
	M200JxxS			
	01	02	03	04
A	123/4.85	169/6.66	215/8.47	261/10.28
B	140/5.51	186/7.33	232/9.14	278/10.95
A1	60.5/2.38	106.5/4.2	152.5/6.01	198.5/7.82
B1	79.5/3.13	125.5/4.94	171.5/6.75	217.5/8.57
C1	96.5/3.80	142.5/5.61	188.5/7.42	234.5/9.24

Clearances per UL98

Minimum enclosure size or equivalent volume

Height	Width	Depth
600 mm	350 mm	200 mm
23.6 in	13.6 in	7.9 in

A	0
B	13 mm 0.5 in
D	13 mm 0.5 in



Cable size	
AWG	C
4-3	100 mm 4 in
2	100 mm 4 in
1	100 mm 4 in
1/0	125 mm 5 in
2/0	150 mm 6 in
3/0-4/0	175 mm 7 in

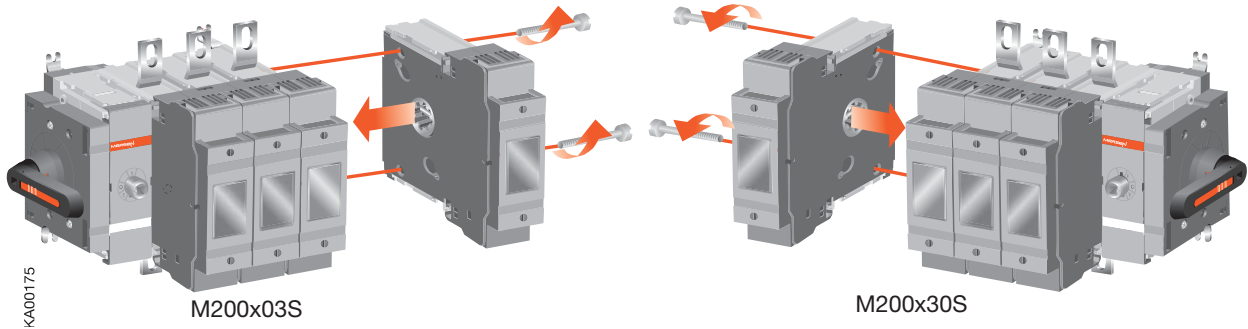
Cable size	
MCM	C
250	200 mm 8 in
300	250 mm 10 in

M200-250xS Fused

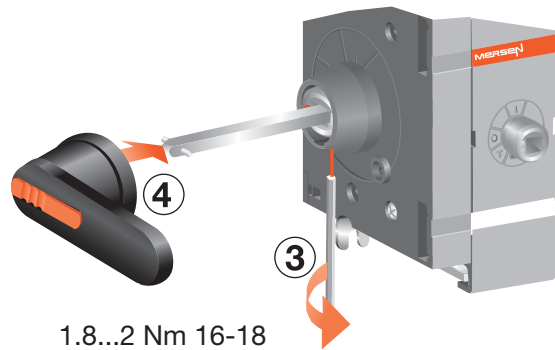
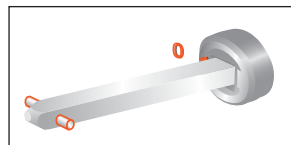
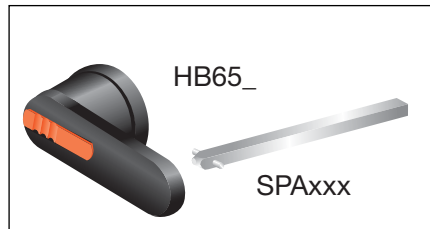
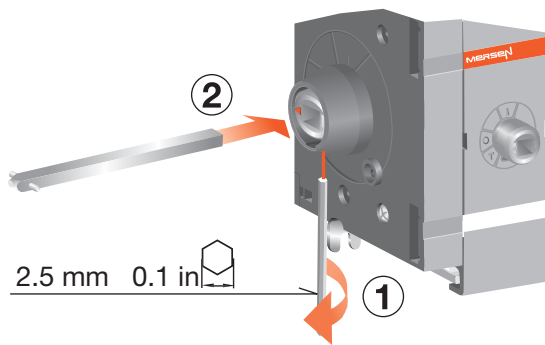
Fourth poles

4PFxxx
4PDxxx
4PBxxx

0.8 Nm 7 lb.in
M200xS M4 x 40
M250xS M4 x 50



Handles

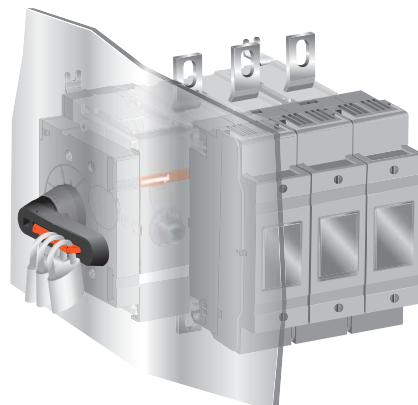


Direct side operation

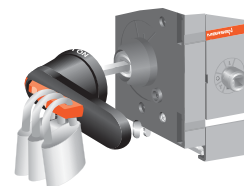
Note: Use protection against direct contact. For example:

External side operation

Ø5...Ø6 mm



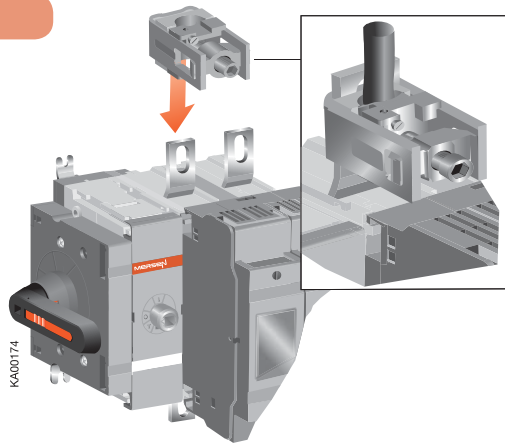
Ø5...Ø10 mm



KA00207

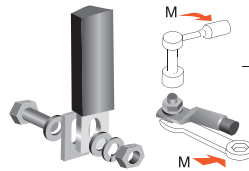
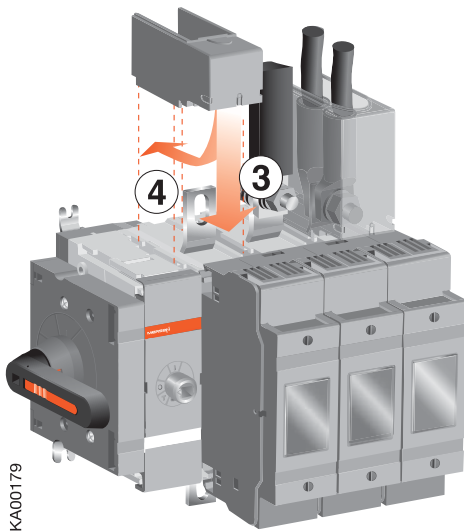
M200-250xS Fused

Lugs

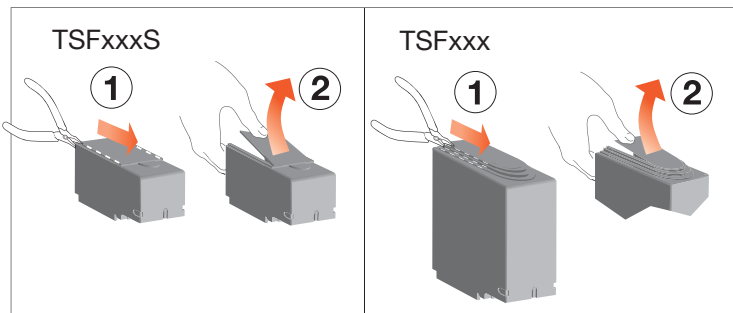


M200Jxx
LUG200 AWG #6 - 300MCM
LUG206 6 x (#14 - #6)

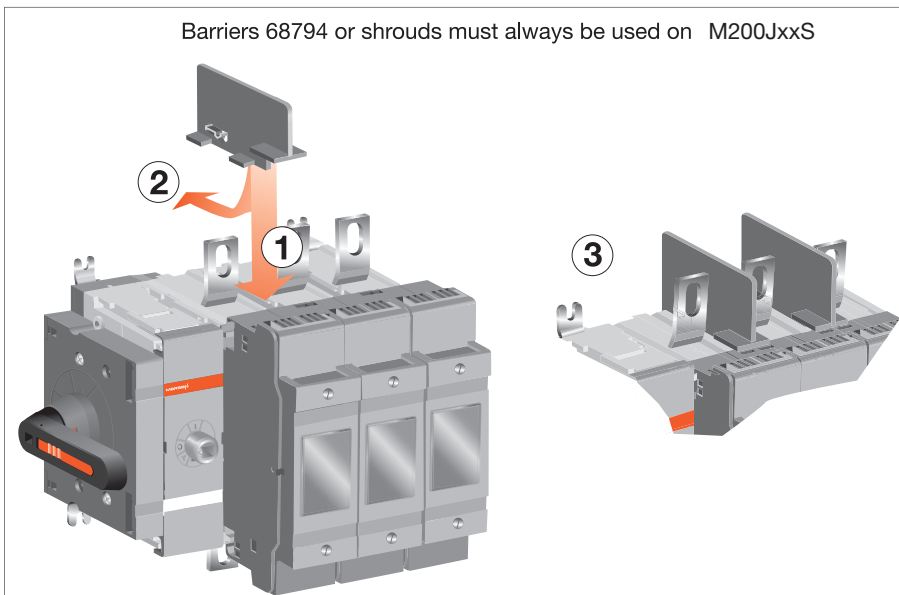
Terminal shrouds



M8 15...22 Nm	133-195 lb.in
M10 30...44 Nm	266-390 lb.in

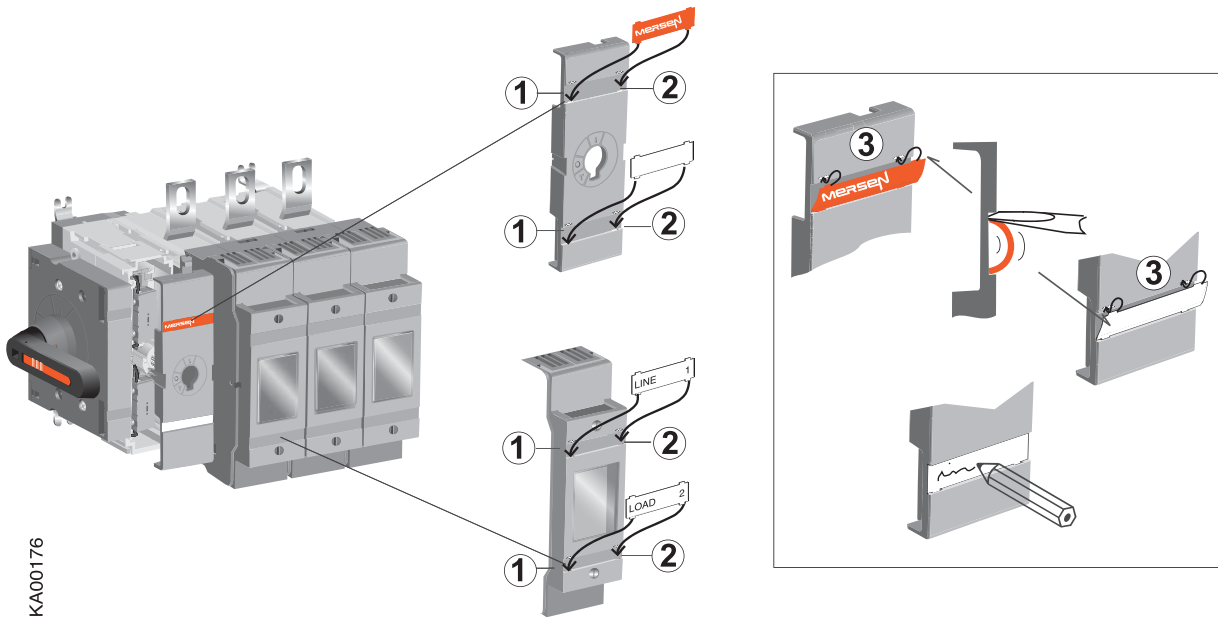


Barriers 68794 or shrouds must always be used on M200JxxS

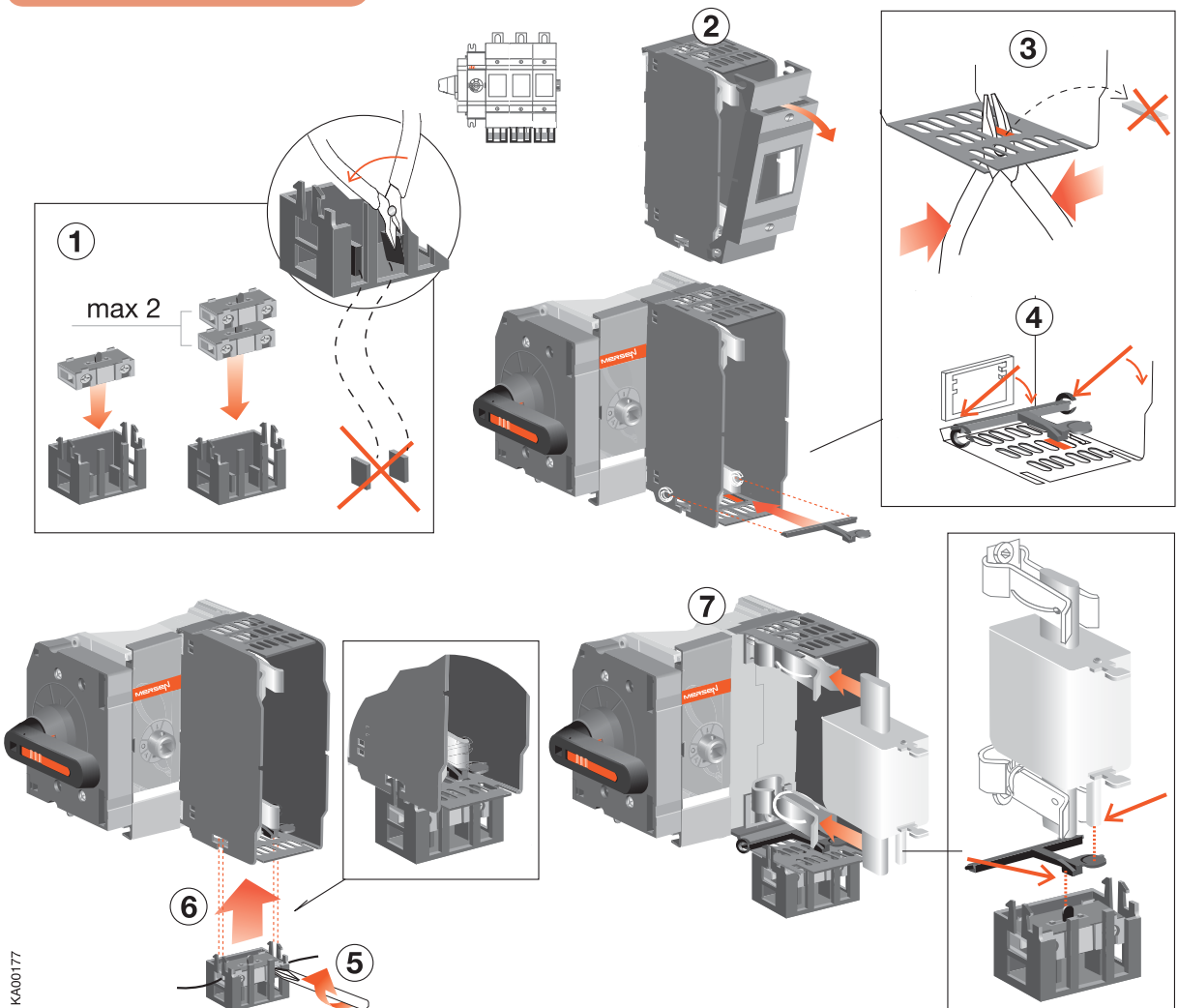


M200-250xS Fused

Label

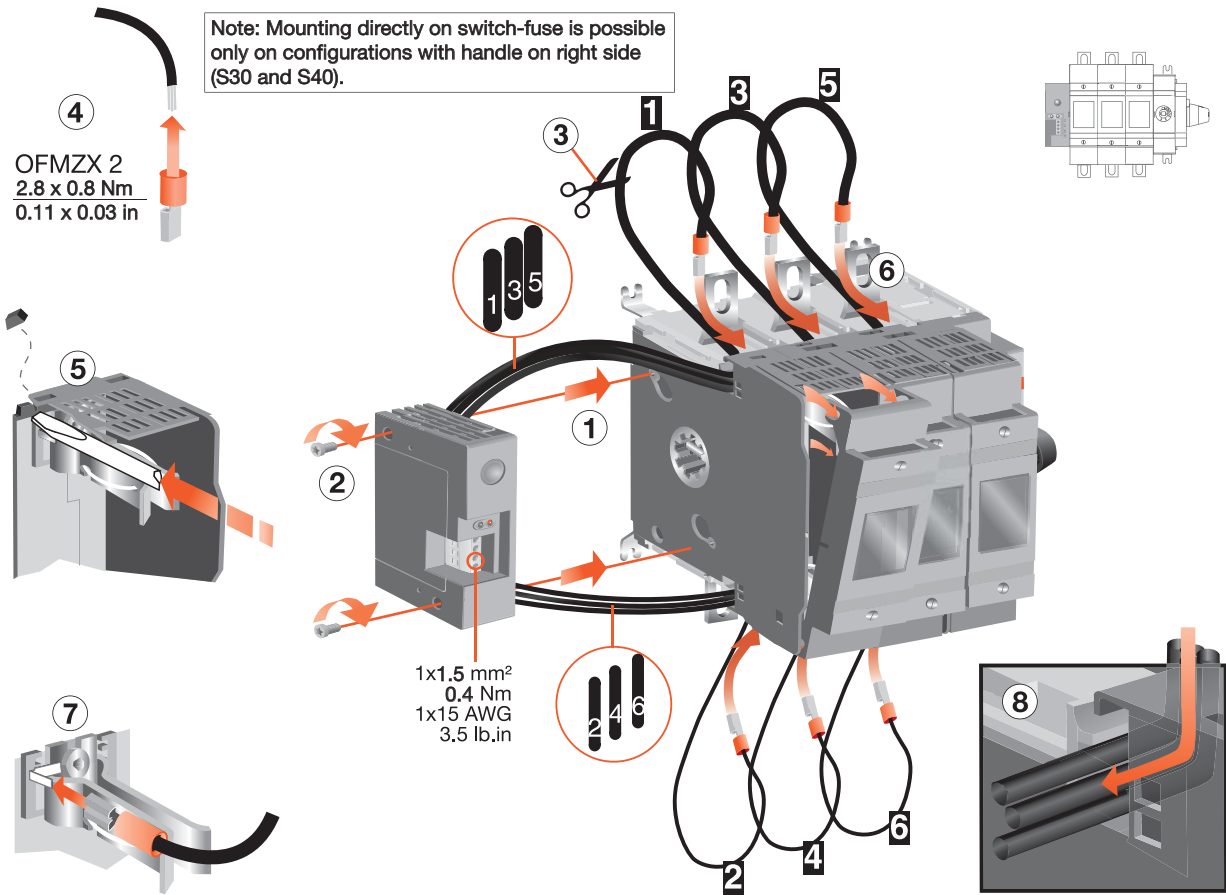


Blown Fuse Indicators

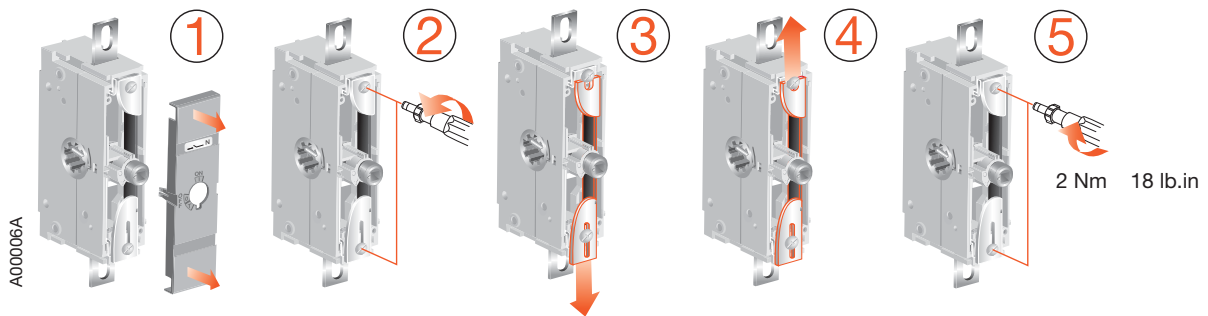


M200-250xS Fused

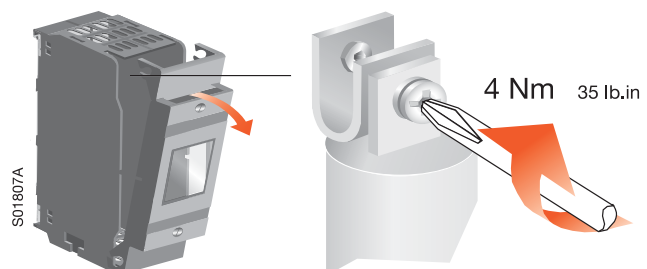
Fuse Monitor



Neutral Links

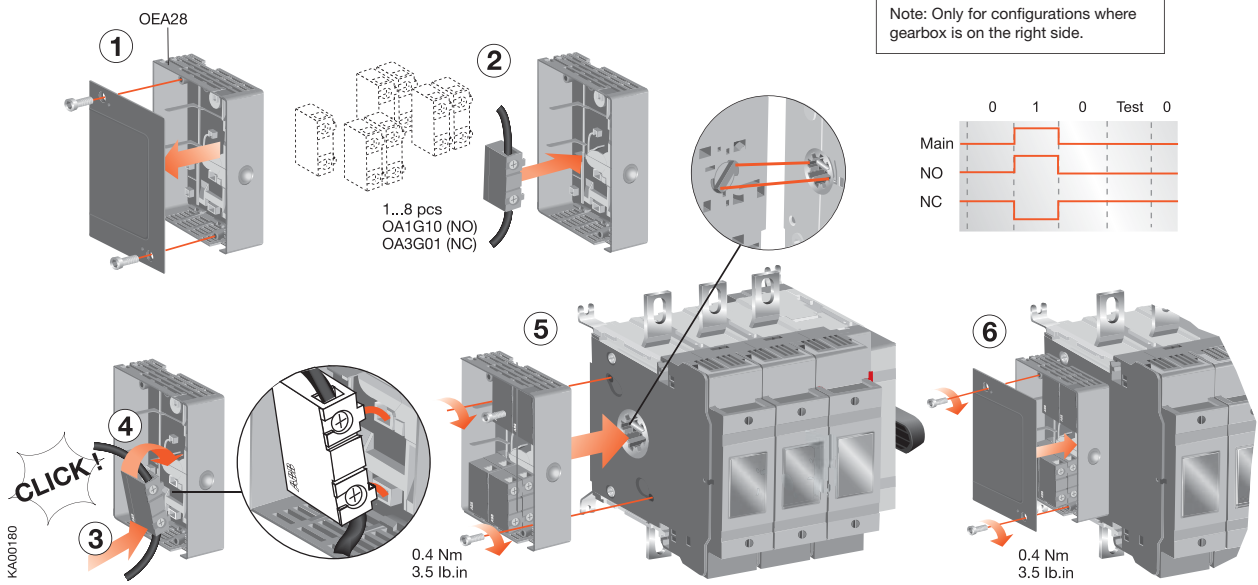


Fuse links

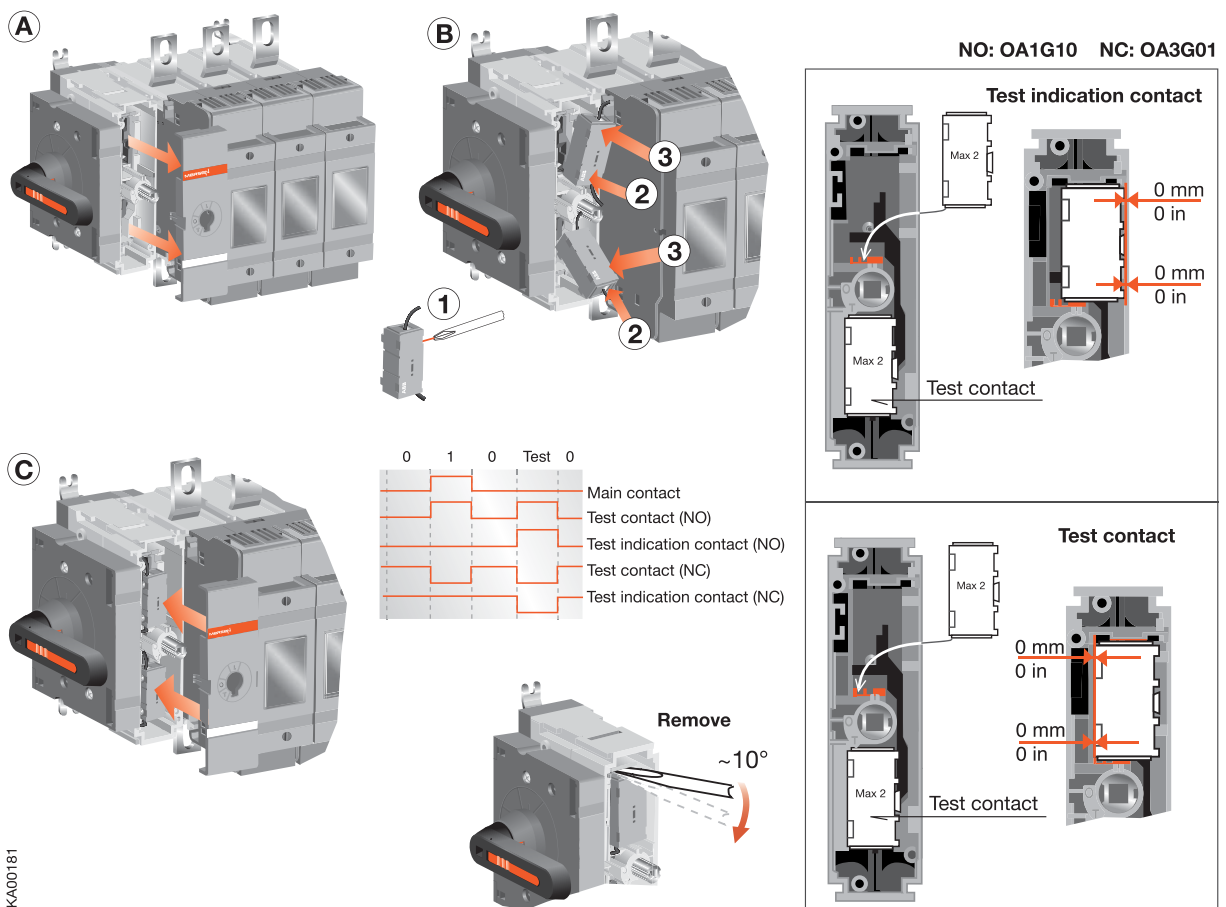


M200-250xS Fused

Externally-mounted Auxiliary contacts



Externally-mounted Auxiliary contacts





ep.mersen.com