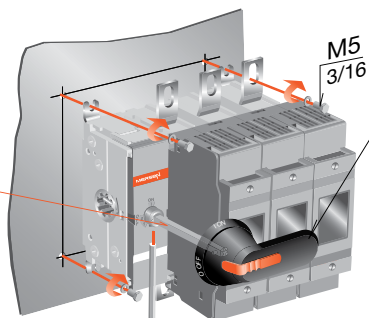
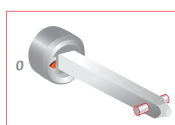


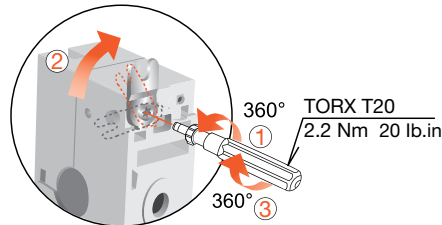
# M200-250x Fused

Document no. 34M200-250F-A

## M200-250x Fused

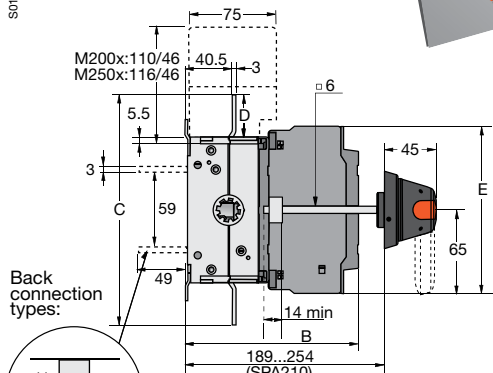


HB65x

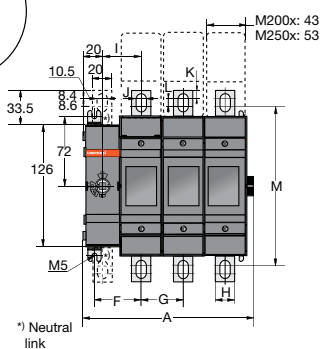
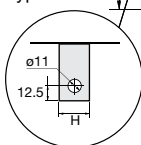


2.5 mm 0.1 in  
1.8...2 Nm 16 - 18 lb.in

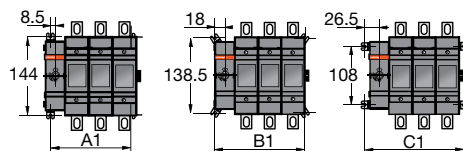
S0716A



Back connection types:

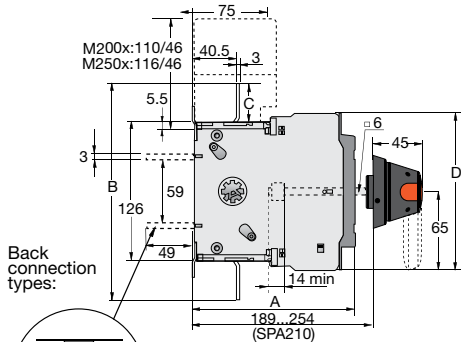


\*) Neutral link

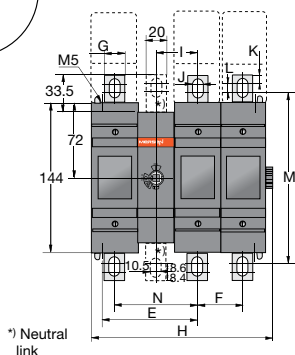
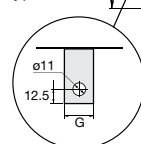


For DIN and BS fuse types, 0-3 and 3-0 configuration

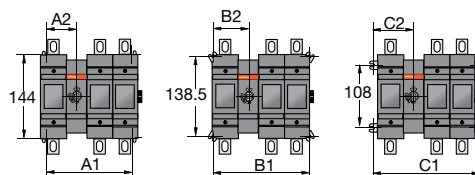
|    | M200x |       |       |       |       |       |       |       | M250x   |         |         |         |
|----|-------|-------|-------|-------|-------|-------|-------|-------|---------|---------|---------|---------|
|    | D01   | B01   | D02   | B02   | D03   | B03   | D04   | B04   | D01/B01 | D02/B02 | D03/B03 | D04/B04 |
| A  | 89.5  | 89.5  | 133   | 133   | 176.5 | 176.5 | 220   | 220   | 99.5    | 153.5   | 207.5   | 261.5   |
| B  | 149   | 130   | 149   | 130   | 149   | 130   | 149   | 130   | 154     | 154     | 154     | 154     |
| C  | 198.5 | 198.5 | 198.5 | 198.5 | 198.5 | 198.5 | 198.5 | 198.5 | 193     | 193     | 193     | 193     |
| D  | 36.5  | 36.5  | 36.5  | 36.5  | 36.5  | 36.5  | 36.5  | 36.5  | 33.5    | 33.5    | 33.5    | 33.5    |
| E  | 144.5 | 144.5 | 144.5 | 144.5 | 144.5 | 144.5 | 144.5 | 144.5 | 148.5   | 148.5   | 148.5   | 148.5   |
| F  | 48.5  | 48.5  | 48.5  | 48.5  | 48.5  | 48.5  | 48.5  | 48.5  | 53.5    | 53.5    | 53.5    | 53.5    |
| G  | -     | -     | 43.5  | 43.5  | 43.5  | 43.5  | 43.5  | 43.5  | -       | 54      | 54      | 54      |
| H  | 20    | 20    | 20    | 20    | 20    | 20    | 20    | 20    | 25      | 25      | 25      | 25      |
| I  | 40    | 40    | 40    | 40    | 40    | 40    | 40    | 40    | 45      | 45      | 45      | 45      |
| J  | 10    | 10    | 10    | 10    | 10    | 10    | 10    | 10    | 11      | 11      | 11      | 11      |
| K  | 8.4   | 8.4   | 8.4   | 8.4   | 8.4   | 8.4   | 8.4   | 8.4   | 11.5    | 11.5    | 11.5    | 11.5    |
| L  | 8.6   | 8.6   | 8.6   | 8.6   | 8.6   | 8.6   | 8.6   | 8.6   | 4       | 4       | 4       | 4       |
| M  | 164.5 | 164.5 | 164.5 | 164.5 | 164.5 | 164.5 | 164.5 | 164.5 | 162     | 162     | 162     | 162     |
| A1 | 60.5  | 60.5  | 104   | 104   | 147.5 | 147.5 | 191   | 191   | 70.5    | 124.5   | 178.5   | 232.5   |
| B1 | 79.5  | 79.5  | 123   | 123   | 166.5 | 166.5 | 210   | 210   | 89.5    | 143.5   | 197.5   | 251.5   |
| C1 | 96.5  | 96.5  | 140   | 140   | 183.5 | 183.5 | 227   | 227   | 106.5   | 160.5   | 214.5   | 268.5   |



Back connection types:



\*) Neutral link

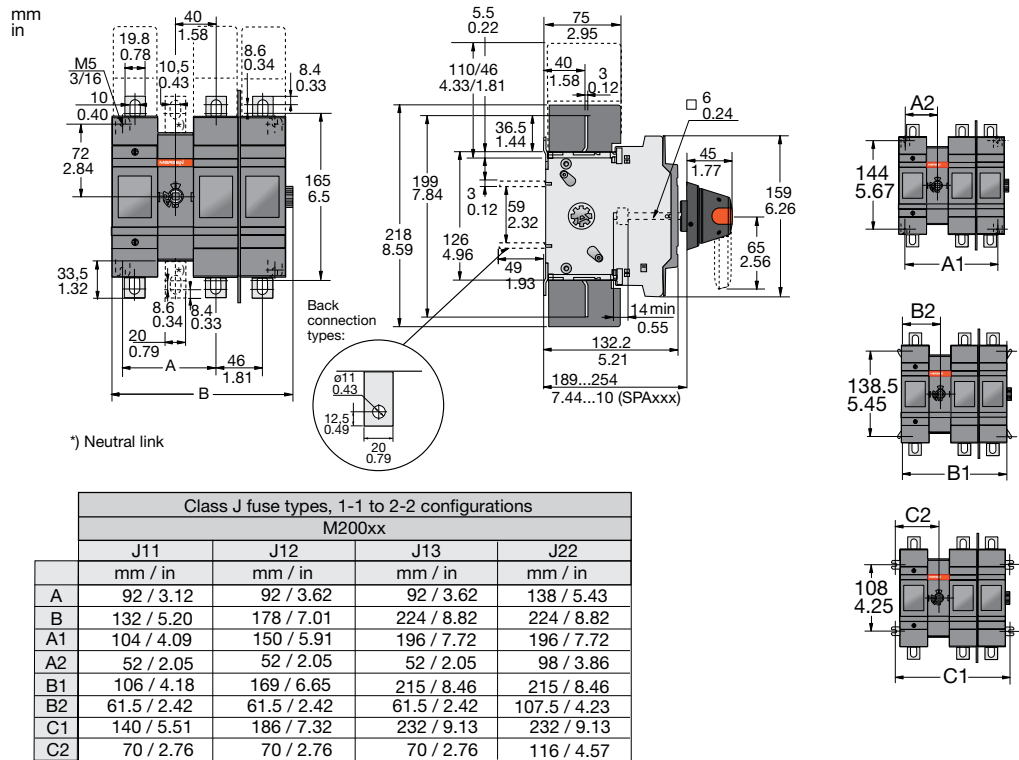
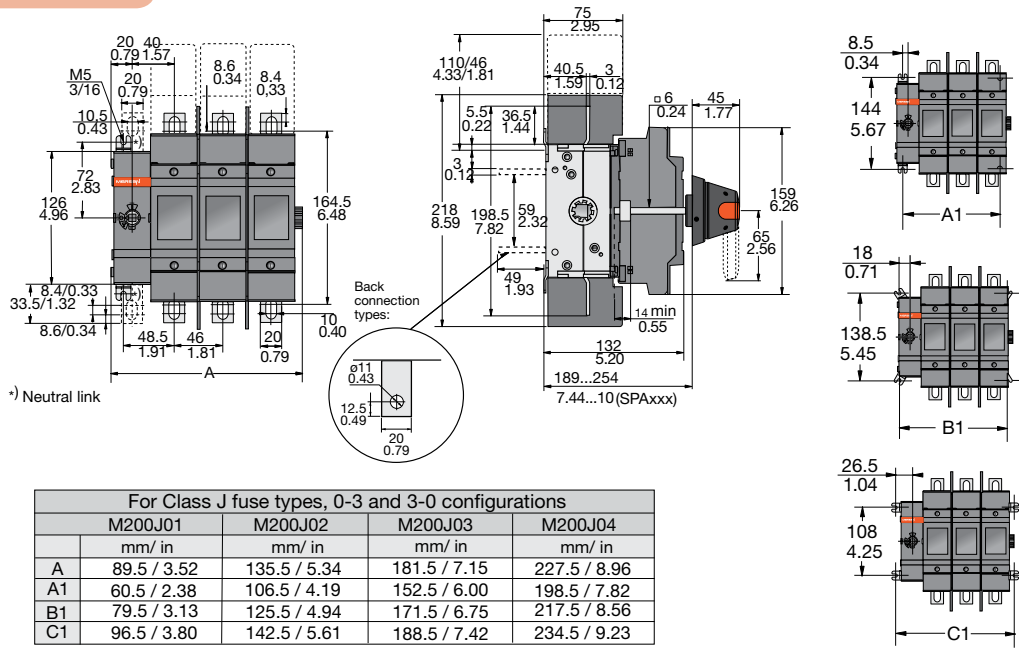


For DIN and BS fuse types, 1-1 to 2-2 configurations

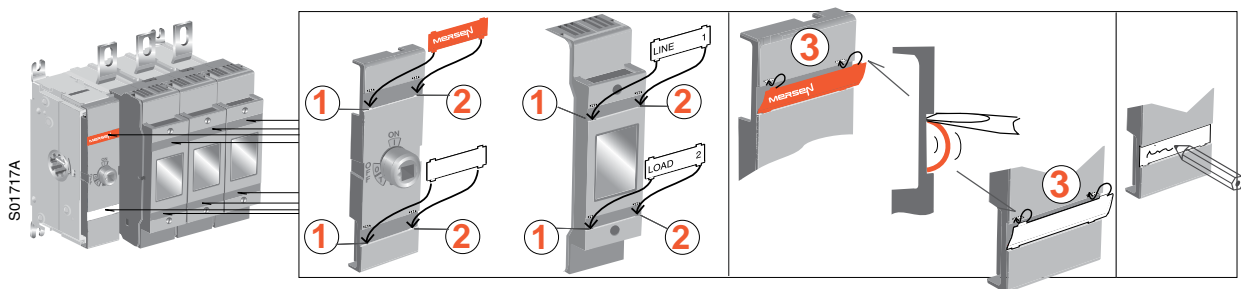
|    | M200x |       |       |       |       |       | M250x |       |       |       |       |       |
|----|-------|-------|-------|-------|-------|-------|-------|-------|-------|-------|-------|-------|
|    | D11   | B11   | D12   | B12   | D13   | B13   | D22   | B22   | D11   | D12   | D13   | D22   |
| A  | 149   | 130   | 149   | 130   | 141   | 130   | 149   | 130   | 154   | 154   | 154   | 154   |
| B  | 199   | 199   | 199   | 199   | 199   | 199   | 199   | 199   | 193   | 193   | 193   | 193   |
| C  | 36.5  | 36.5  | 36.3  | 36.5  | 36.5  | 36.5  | 36.5  | 36.5  | 33.5  | 33.5  | 33.5  | 33.5  |
| D  | 144.5 | 144.5 | 144.5 | 144.5 | 144.5 | 144.5 | 144.5 | 144.5 | 148.5 | 148.5 | 148.5 | 148.5 |
| E  | 92    | 92    | 92    | 92    | 92    | 92    | 135.5 | 135.5 | 112.5 | 112.5 | 112.5 | 161   |
| F  | 43.5  | 43.5  | 43.5  | 43.5  | 43.5  | 43.5  | 43.5  | 43.5  | 54    | 54    | 54    | 54    |
| G  | 20    | 20    | 20    | 20    | 20    | 20    | 20    | 20    | 25    | 25    | 25    | 25    |
| H  | 132   | 132   | 175.5 | 175.5 | 219   | 219   | 219   | 219   | 152   | 206   | 260   | 260   |
| I  | 40    | 40    | 40    | 40    | 40    | 40    | 40    | 40    | 45    | 45    | 45    | 45    |
| J  | 10    | 10    | 10    | 10    | 10    | 10    | 10    | 10    | 11    | 11    | 11    | 11    |
| K  | 8.4   | 8.4   | 8.4   | 8.4   | 8.4   | 8.4   | 8.4   | 8.4   | 11.5  | 11.5  | 11.5  | 11.5  |
| L  | 8.6   | 8.6   | 8.6   | 8.6   | 8.6   | 8.6   | 8.6   | 8.6   | 4     | 4     | 4     | 4     |
| M  | 165   | 165   | 165   | 165   | 165   | 165   | 165   | 165   | 162   | 162   | 162   | 162   |
| N  | 80    | 80    | 80    | 80    | 80    | 80    | 80    | 80    | 90    | 90    | 90    | 90    |
| A1 | 104   | 104   | 147.5 | 147.5 | 191   | 191   | 191   | 191   | 124   | 178   | 232   | 232   |
| A2 | 52    | 52    | 52    | 52    | 52    | 52    | 95.5  | 95.5  | 62    | 62    | 62    | 116   |
| B1 | 123   | 123   | 166.5 | 166.5 | 210   | 210   | 210   | 210   | 143   | 197   | 251   | 251   |
| B2 | 61.5  | 61.5  | 61.5  | 61.5  | 61.5  | 61.5  | 105   | 105   | 71.5  | 71.5  | 71.5  | 125.5 |
| C1 | 140   | 140   | 183.5 | 183.5 | 227   | 227   | 227   | 227   | 160   | 214   | 268   | 268   |
| C2 | 70    | 70    | 70    | 70    | 70    | 70    | 113.5 | 113.5 | 80    | 80    | 80    | 134   |

# M200-250x Fused

## M200Jxx



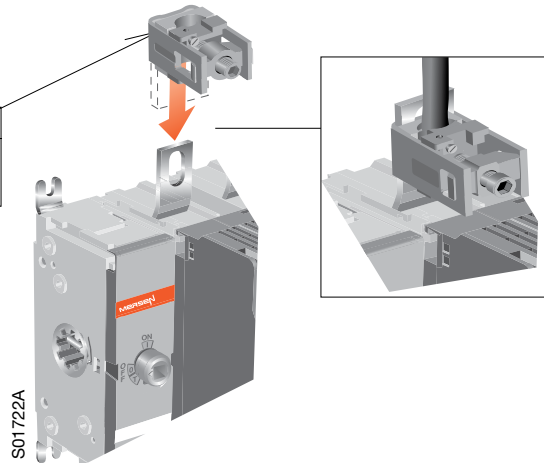
## Label



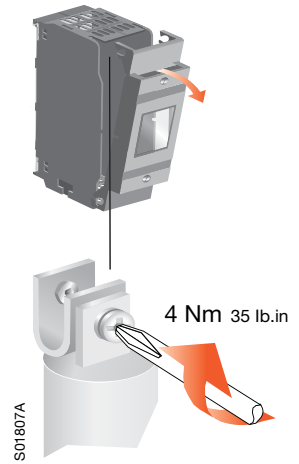
# M200-250x Fused

## Lugs

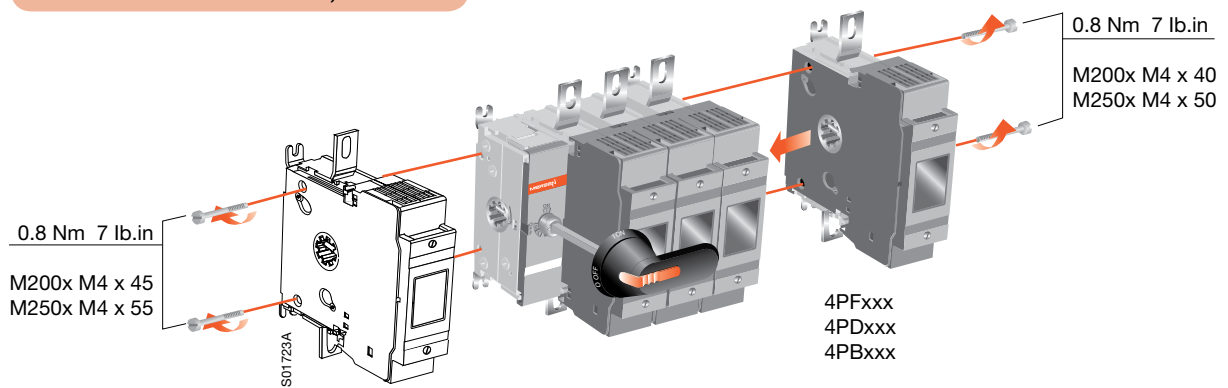
M200Jxx  
LUG200 - AWG#6 - 300 MCM  
LUG206 - 6 x AWG #4-#6



## Fuse links



## Fourth Poles 4Px200, 4Px250

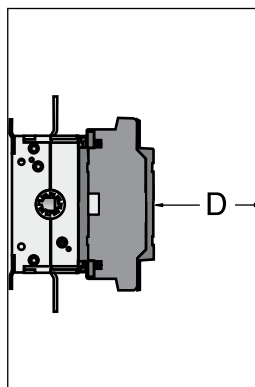
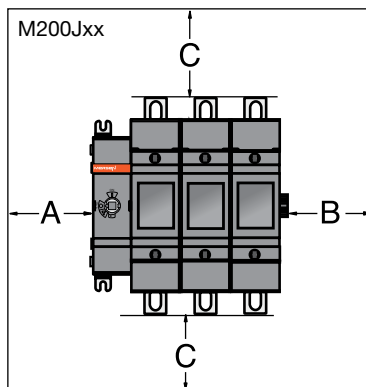


## Clearances per UL98

Minimum enclosure size  
or equivalent volume

| Height  | Width   | Depth  |
|---------|---------|--------|
| 600 mm  | 350 mm  | 200 mm |
| 23.6 in | 13.8 in | 7.9 in |

|   |              |
|---|--------------|
| A | 0            |
| B | 13 mm 0.5 in |
| D | 13 mm 0.5 in |

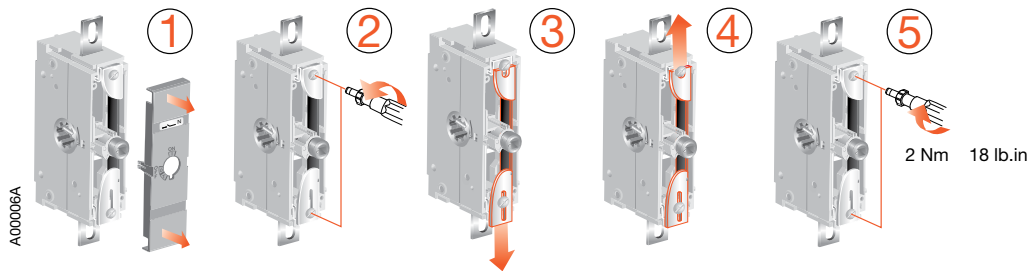


| Cable size |             |
|------------|-------------|
| AWG        | C           |
| 4-3        | 100 mm 4 in |
| 2          | 100 mm 4 in |
| 1          | 100 mm 4 in |
| 1/0        | 125 mm 5 in |
| 2/0        | 150 mm 6 in |
| 3/0-4/0    | 175 mm 7 in |

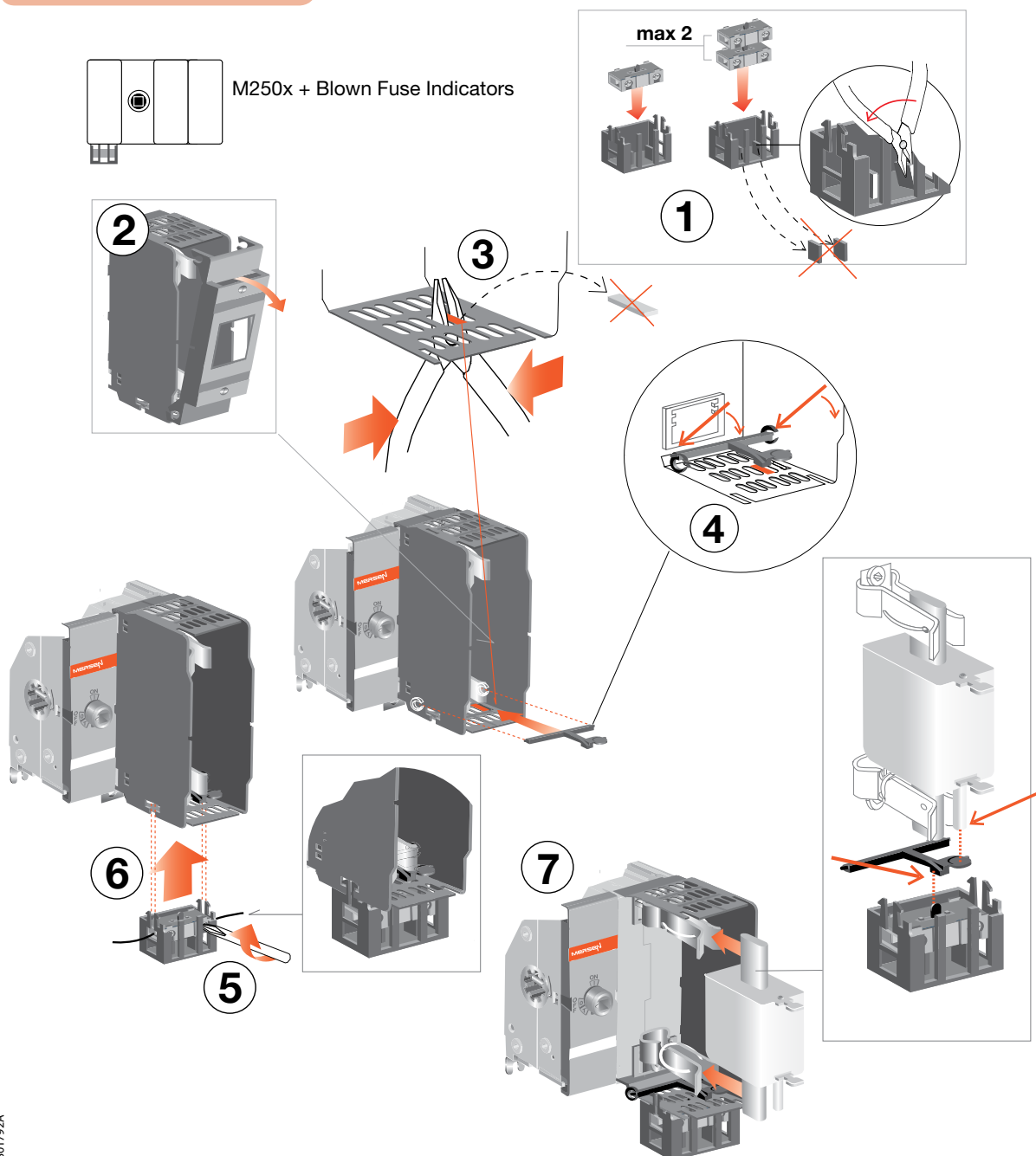
| Cable size |              |
|------------|--------------|
| MCM        | C            |
| 250        | 200 mm 8 in  |
| 300        | 250 mm 10 in |

# M200-250x Fused

## Neutral links

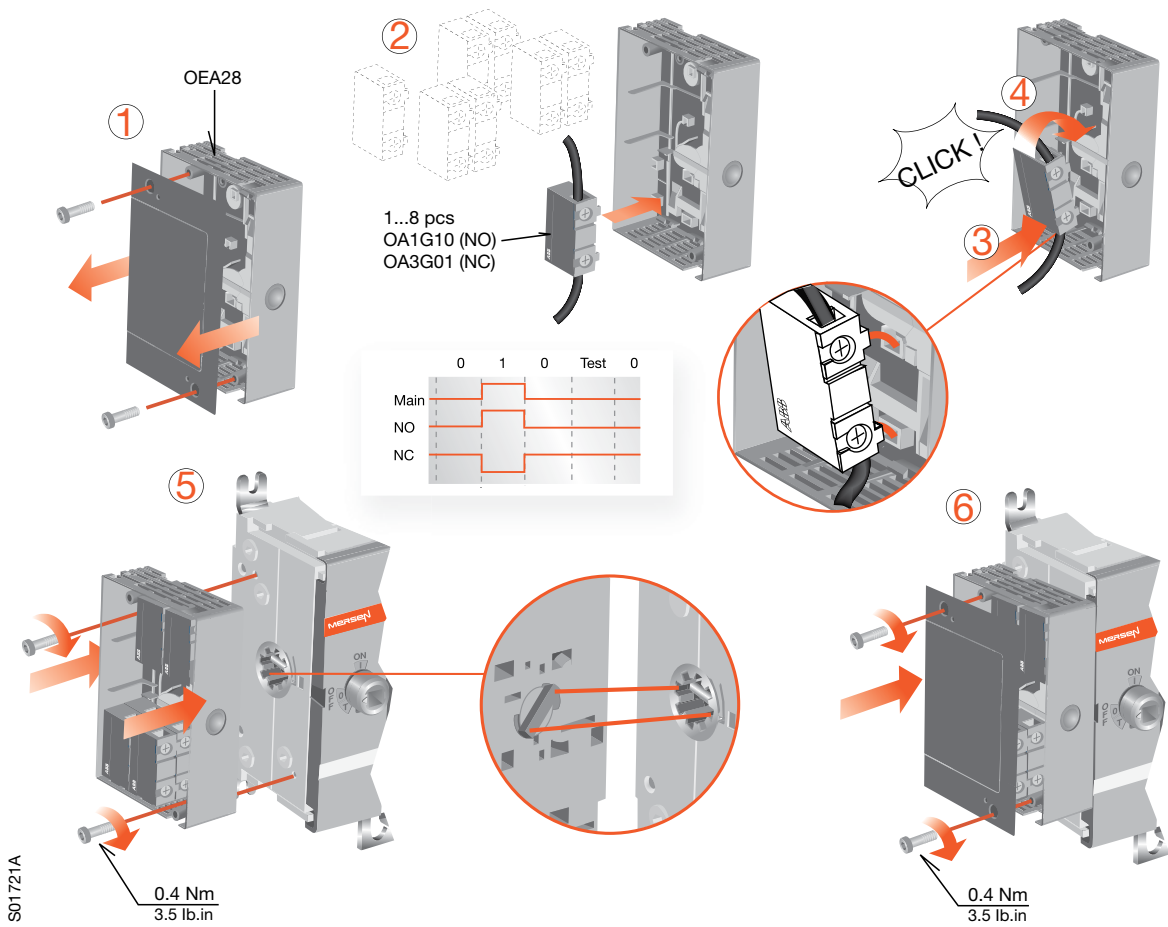


## Blown Fuse Indicators

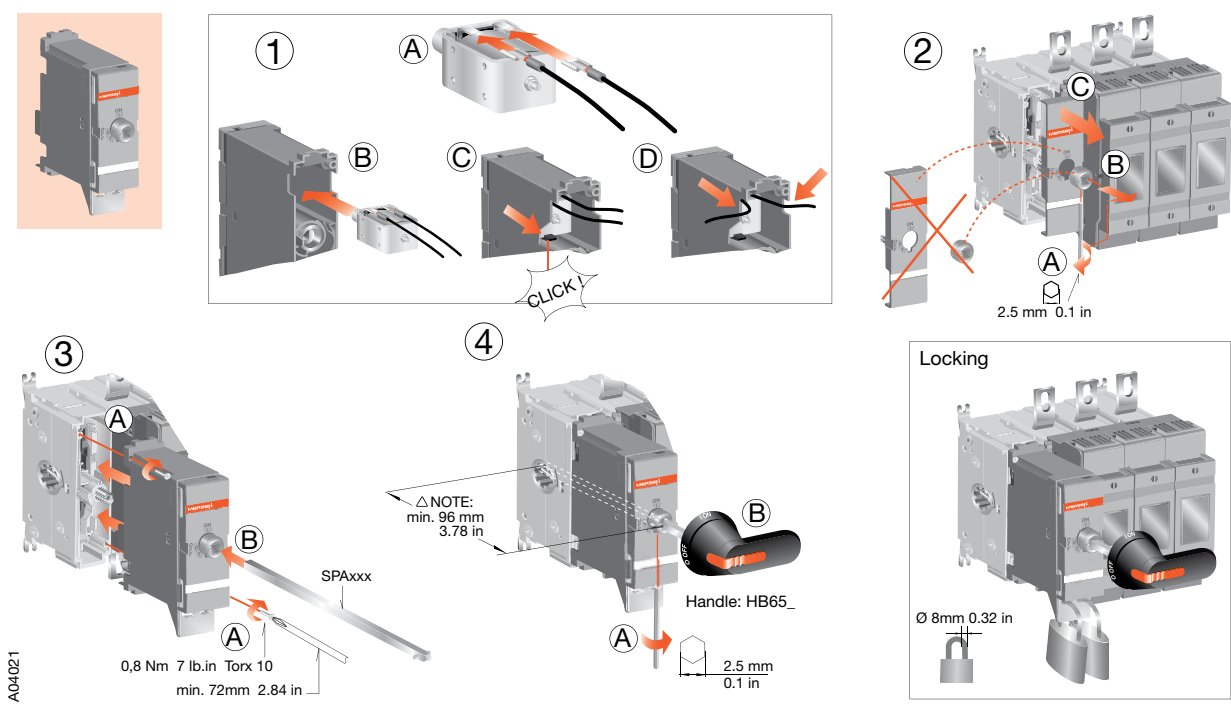


# M200-250x Fused

## Externally-mounted Auxiliary contact

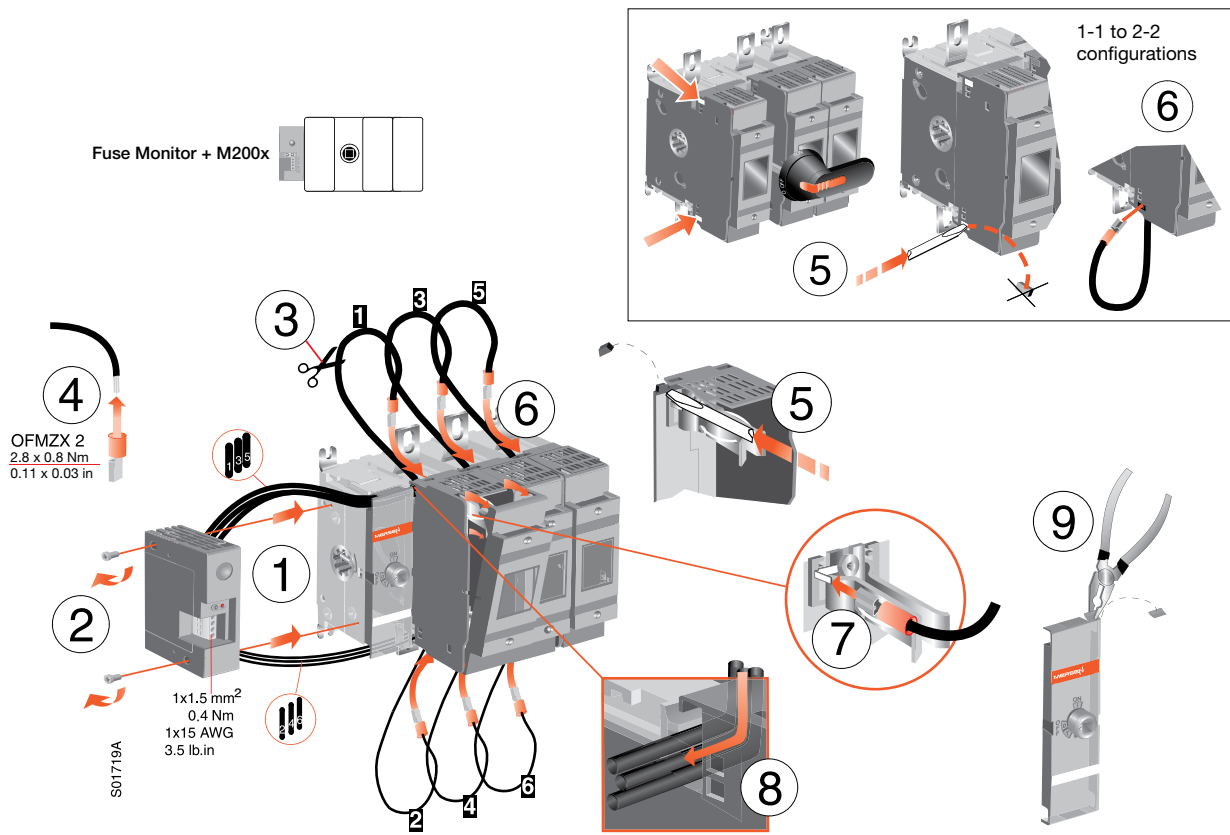


## LOFF250, LON250 Locking Mechanism

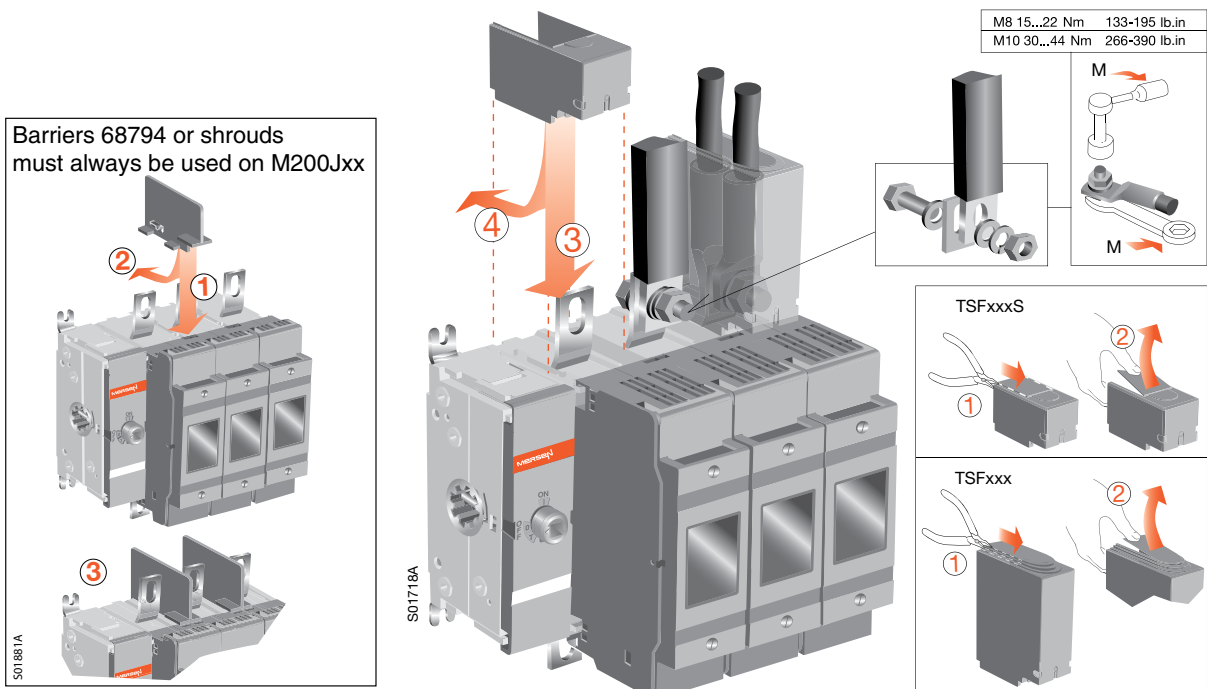


# M200-250x Fused

## Fuse Monitor

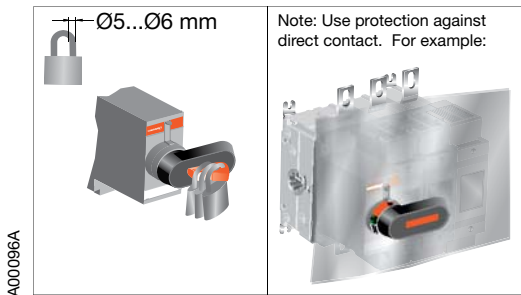
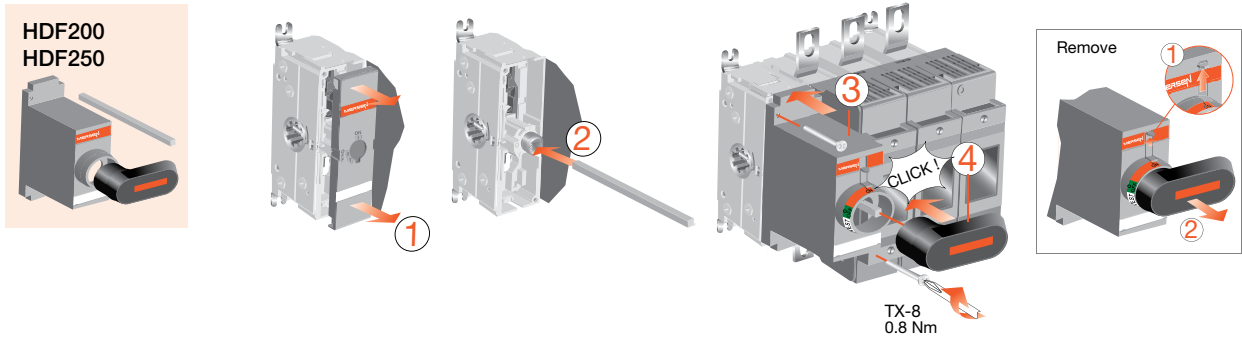


## TSFxxx Terminal Shrouds

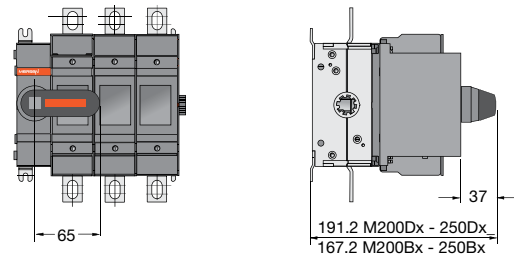


# M200-250x Fused

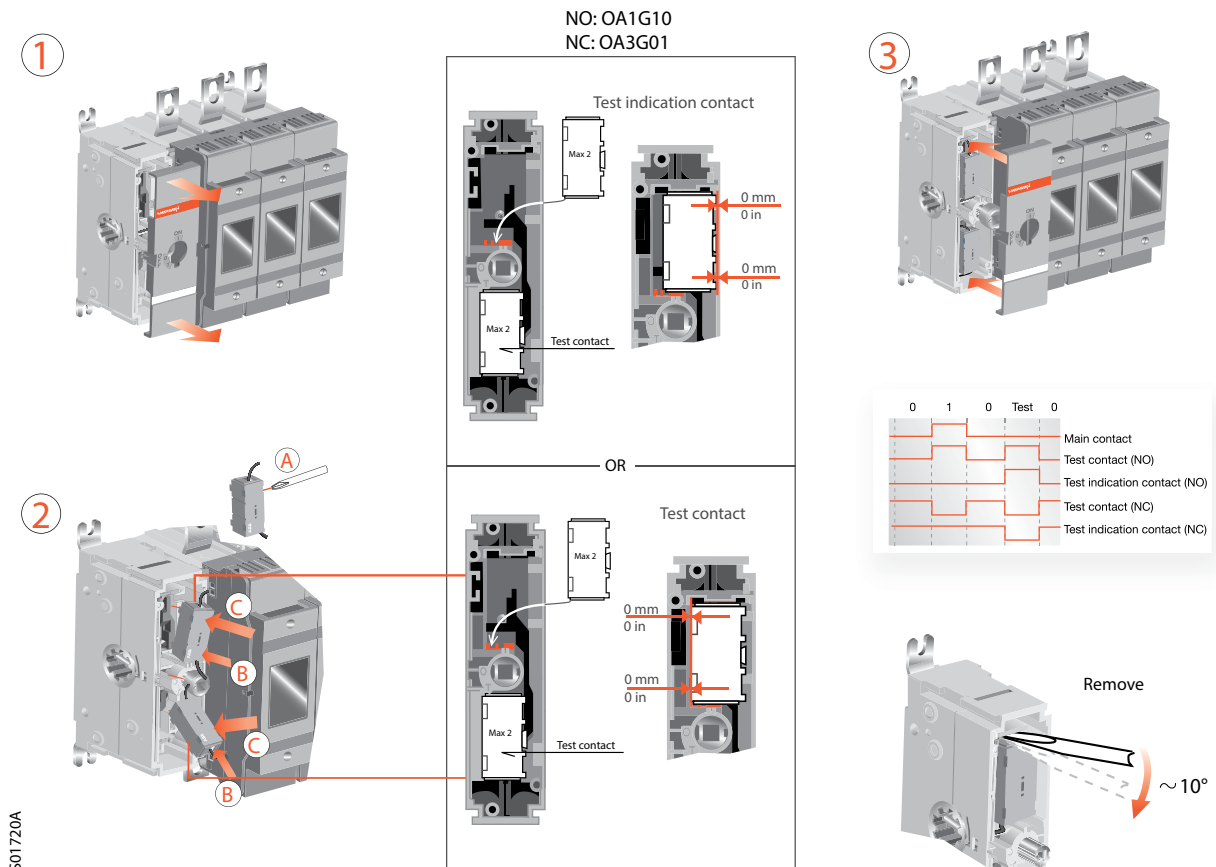
## HDFxxx Direct-mount handles



## For DIN and BS type fuses



## Internally-mounted Auxiliary contacts



**MERSEN**

[ep.mersen.com](http://ep.mersen.com)