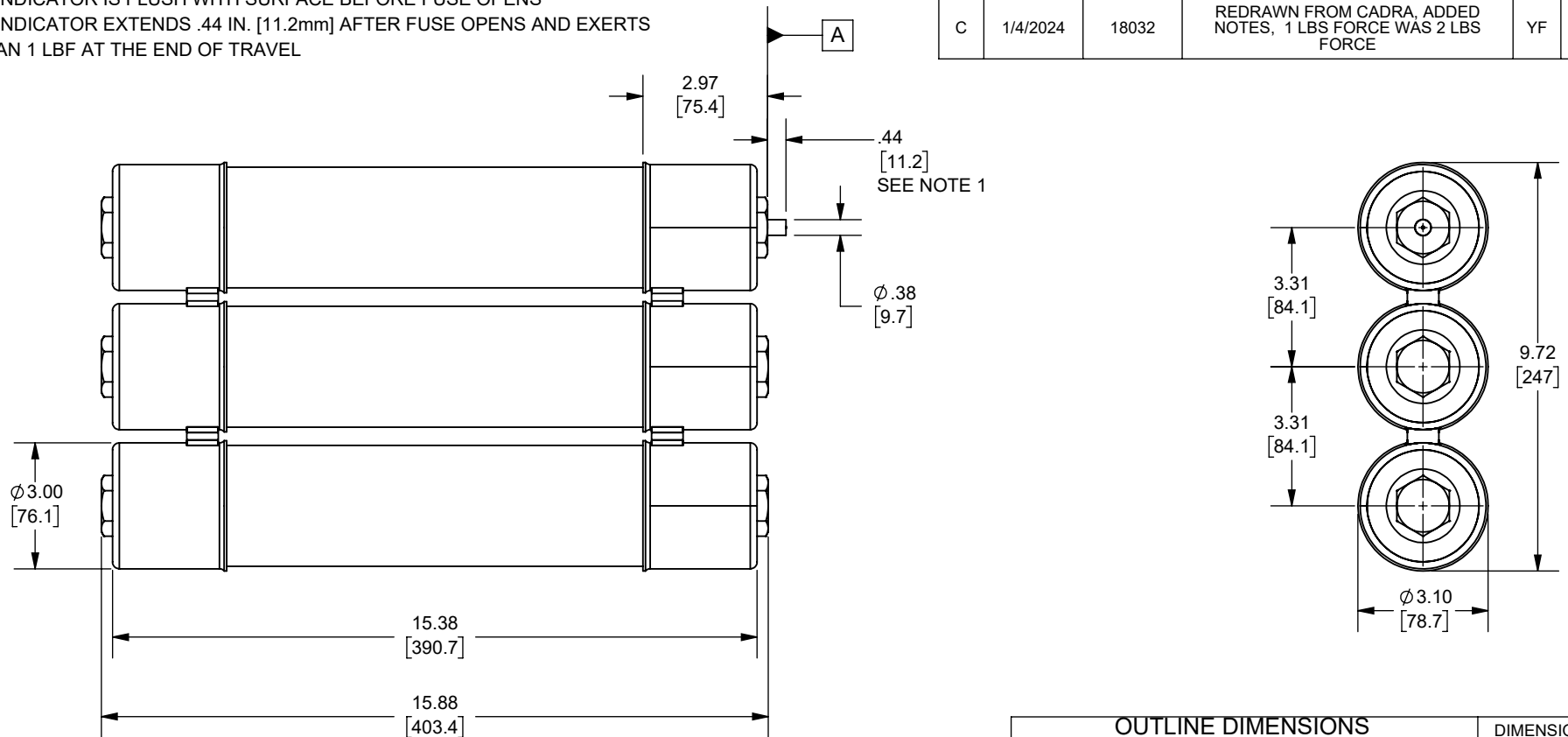


NOTES:

- INDICATOR IS FLUSH WITH SURFACE BEFORE FUSE OPENS
INDICATOR EXTENDS .44 IN. [11.2mm] AFTER FUSE OPENS AND EXERTS AN 1 LBF AT THE END OF TRAVEL



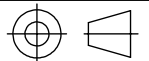
REV.	DATE	ECO	DESCRIPTION	BY	CK	APP
B	12/5/2007	N/A	UPDATED FORMAT AND REDRAWN WAS ON DWG 18671 REV A	JMM	N/A	N/A
C	1/4/2024	18032	REDRAWN FROM CADRA. ADDED NOTES, 1 LBS FORCE WAS 2 LBS FORCE	YF	N/A	SEE ECO

OUTLINE DIMENSIONS
NOT TO BE USED FOR PRODUCTION

DIMENSIONS IN [] ARE MILLIMETERS

Approval stage / Etat d'approbation: APPROUVÉ POUR FABRICATION / APPROVED FOR MANUFACTURING		Product Class:/ Product Type: MEDIUM VOLTAGE R-RATED	
Initial ECO / ECO intiale: ECO-18032-000		Product amp rating:/ Voltage rating: 36R 5.08kV	
Draw by / Dessiné par: Yadyra Fang	Date : 6/14/2024	Title / Titre: OUTLINE A480R36R-1	
Checked by / Vérifié par: Luis ARMENTA	Date : 6/14/2024		
Electrical Power 374 MERRIMAC STREET NEWBURYPORT, MA 01950		Drawing / de dessin: 18671	
Éch / Scale : 1:4 Format / Size : A		Part / Article: SEE TABLE	Page : 1/1

Weight :
Masse :



Rev : **C**
Rév :



A480R36R-1
CATALOG
NUMBER

Ce plan strictement confidentiel est la propriété exclusive de la société MERSEN sans l'autorisation écrite de laquelle il ne peut être ni reproduit, ni copié, ni communiqué à des tiers.
This drawing and specifications there on is property of MERSEN and shall not be reproduced or copied or used in whole or in part as the base for manufacture or sale of item without written permission.