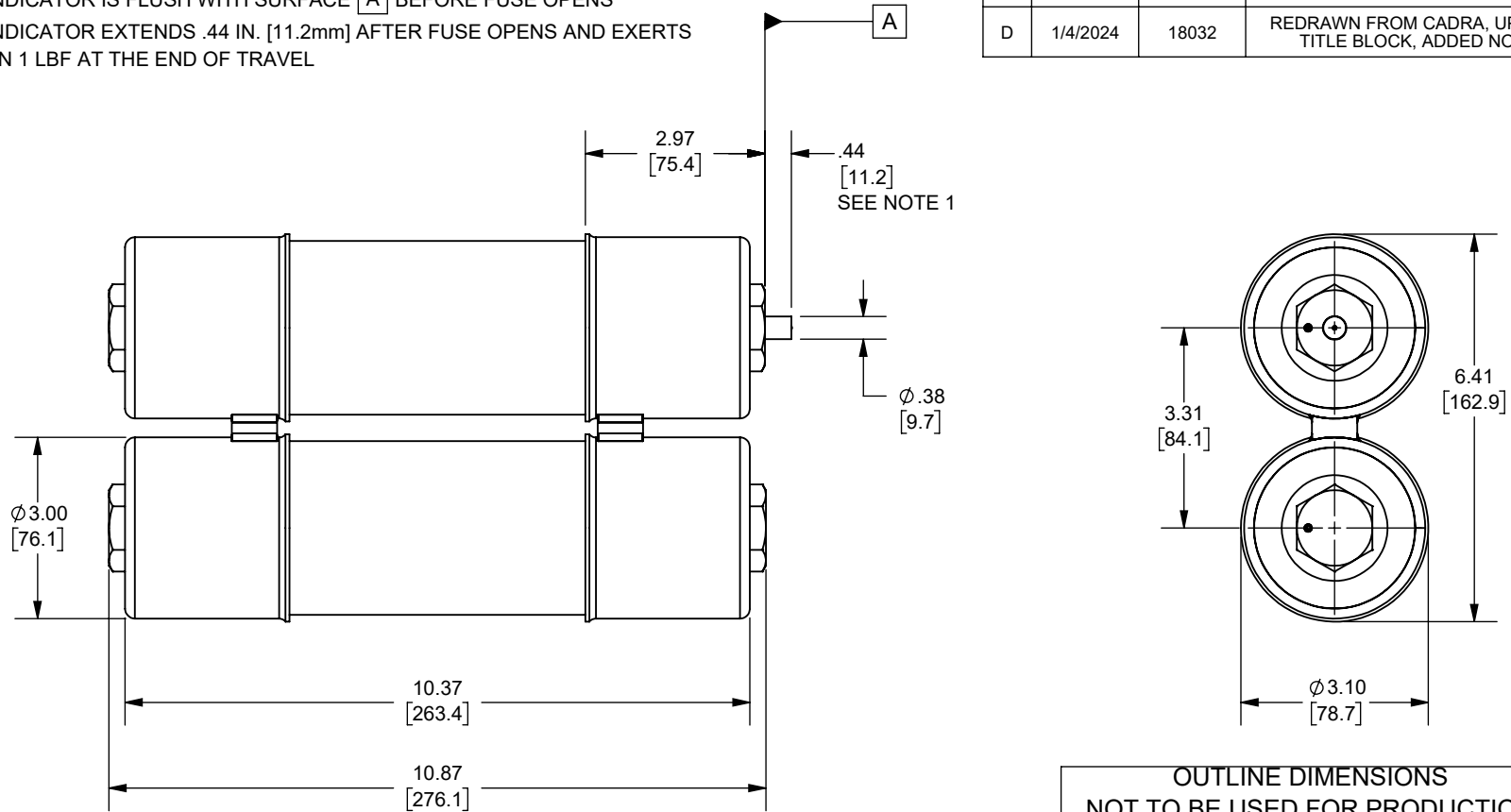


NOTES:

1. INDICATOR IS FLUSH WITH SURFACE **A** BEFORE FUSE OPENS
 INDICATOR EXTENDS .44 IN. [11.2mm] AFTER FUSE OPENS AND EXERTS
 AN 1 LBF AT THE END OF TRAVEL

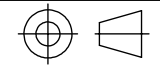
REV.	DATE	ECO	DESCRIPTION	BY	CK	APP
C	12/5/2007	N/A	UPDATED FORMAT AND REDRAWN WAS ON DWG 18453 REV B	JMM	N/A	N/A
D	1/4/2024	18032	REDRAWN FROM CADRA, UPDATED TITLE BLOCK, ADDED NOTES	YF	N/A	SEE ECO



OUTLINE DIMENSIONS
 NOT TO BE USED FOR PRODUCTION
 DIMENSIONS IN [] ARE MILLIMETERS

Approval stage / Etat d'approbation: APPROUVÉ POUR FABRICATION / APPROVED FOR MANUFACTURING		Product Class:/ Product Type: MEDIUM VOLTAGE MOTOR STARTER	
Initial ECO / ECO intiale: ECO-18032-000		Product amp rating:/ Voltage rating: 18-24R 2.4kV	
Draw by / Dessiné par: Yadyra Fang	Date : 6/14/2024	Title / Titre: OUTLINE A240R(18,24)R	
Checked by / Vérifié par: Luis ARMENTA	Date : 6/14/2024		
Electrical Power 374 MERRIMAC STREET NEWBURYPORT, MA 01950		Drawing / de dessin: 18453	
Éch / Scale : 1:3 Format / Size : A		Part / Article: SEE TABLE	Page : 1/1

Weight :
Masse :



Rev : **D**
Rév :



A240R24R
A240R18R
CATALOG NUMBER

Ce plan strictement confidentiel est la propriété exclusive de la société MERSEN sans l'autorisation écrite de laquelle il ne peut être ni reproduit, ni copié, ni communiqué à des tiers.
 This drawing and specifications there on is property of MERSEN and shall not be reproduced or copied or used in whole or in part as the base for manufacture or sale of item without written permission.