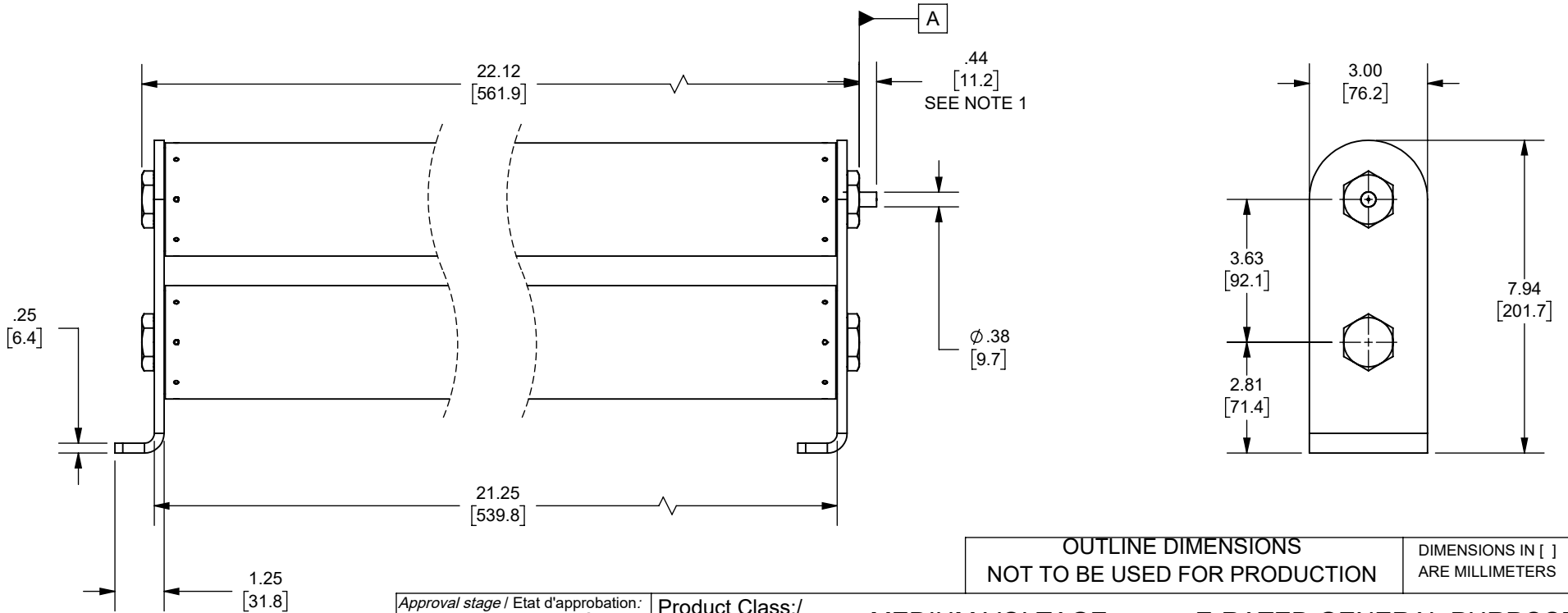


NOTES:

- INDICATOR IS FLUSH WITH SURFACE **A** BEFORE FUSE OPENS
INDICATOR EXTENDS .44 IN. [11.2mm] AFTER FUSE OPENS AND EXERTS
AN 1 LBF AT THE END OF TRAVEL

REV.	DATE	ECO	DESCRIPTION	BY	CK	APP
A	1/17/2024	18032	REDRAWN FROM CADRA, UPDATED TITLE BLOCK, ADDED NOTES, DIM .44[11.2] WAS .50[12.7], 1 LBS FORCE WAS 2 LBS FORCE	YF	N/A	SEE ECO



OUTLINE DIMENSIONS
NOT TO BE USED FOR PRODUCTION

DIMENSIONS IN []
ARE MILLIMETERS

Approval stage / Etat d'approbation: APPROUVÉ POUR FABRICATION / APPROVED FOR MANUFACTURING	Product Class:/ Product Type: MEDIUM VOLTAGE E-RATED GENERAL PURPOSE		
	Product amp rating:/ Voltage rating: 125-200E 15.5kV		
Initial ECO / ECO intiale: ECO-18032-000	Title / Titre: OUTLINE	Weight : Masse :	
Draw by / Dessiné par: Yadyra Fang	Date : 1/17/2024	A155C2D0R0-(125-200)E	
Checked by / Vérifié par: Luis ARMENTA	Date : 6/13/2024	Drawing / de dessin: 107121	Rev : Rév : A
Electrical Power 374 MERRIMAC STREET NEWBURYPORT, MA 01950	Éch / Scale : 1:4 Format / Size : A	Part / Article: SEE TABLE	Page : 1/1

A155C2D0R0-200E
A155C2D0R0-150E
A155C2D0R0-125E
CATALOG NUMBER



Ce plan strictement confidentiel est la propriété exclusive de la société MERSEN sans l'autorisation écrite de laquelle il ne peut être ni reproduit, ni copié, ni communiqué à des tiers.
This drawing and specifications there on is property of MERSEN and shall not be reproduced or copied or used in whole or in part as the base for manufacture or sale of item without written permission.